

# Maple Fire

IAP Map 1 September 2016  
36,720 Acres

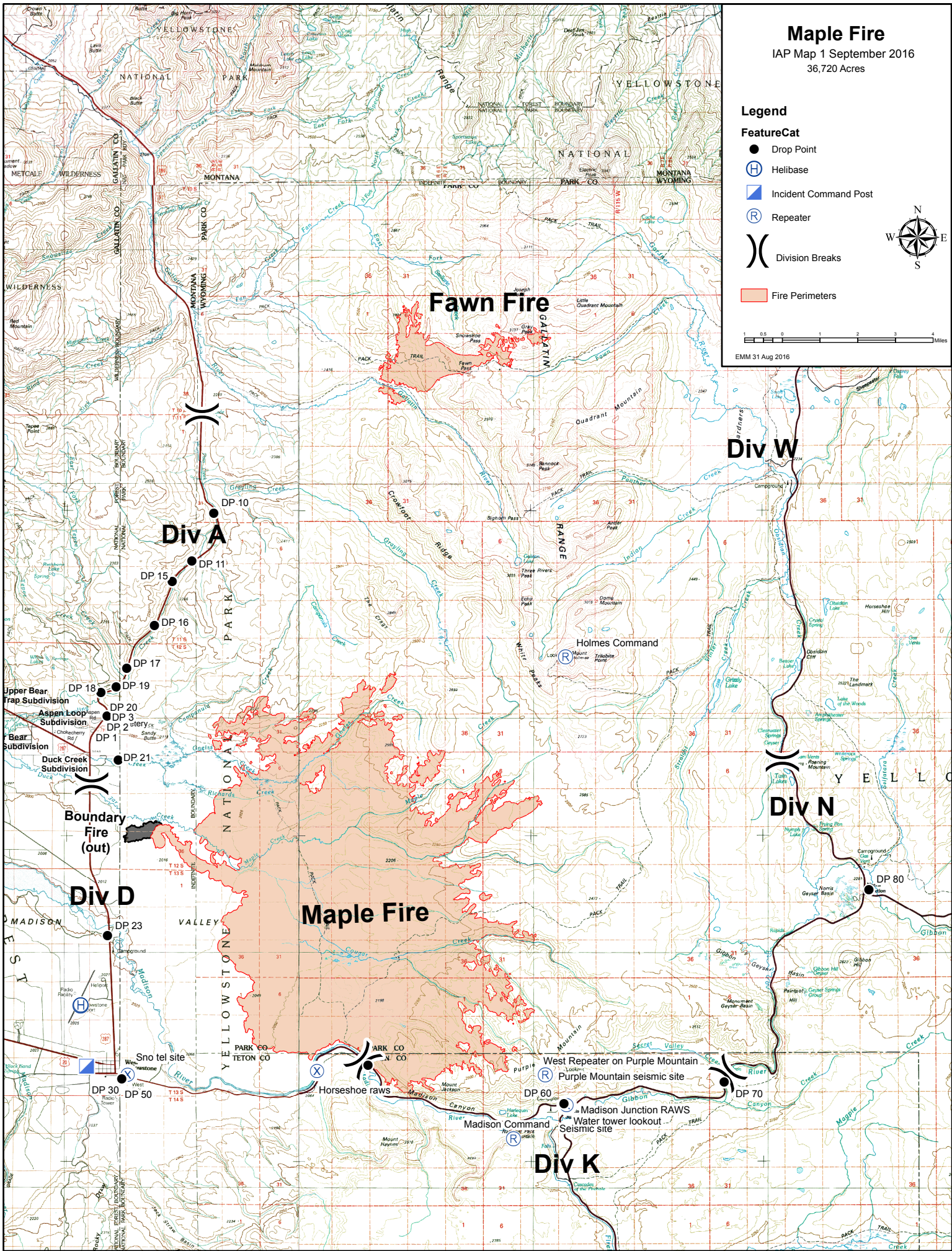
## Legend

### FeatureCat

- Drop Point
- ⊕ Helibase
- ▣ Incident Command Post
- Ⓡ Repeater
- ) Division Breaks
- ▭ Fire Perimeters



0 0.5 1 2 3 4 Miles  
EMM 31 Aug 2016



**Fawn Fire**

**Maple Fire**

**Div A**

**Div W**

**Div N**

**Div D**

**Div K**

**Boundary Fire (out)**

West Repeater on Purple Mountain  
Purple Mountain seismic site

Madison Junction RAWS  
Water tower lookout  
Seismic site

Upper Bear Trap Subdivision  
Aspen Loop Subdivision  
Bear Subdivision  
Duck Creek Subdivision

Madison Command

Horseshoe raws

Sno tel site

Helibase

Repeater

Drop Point

Incident Command Post

Division Breaks

Fire Perimeters