

# Maple Fire

Briefing Map 10 September 2016

43,373 Acres

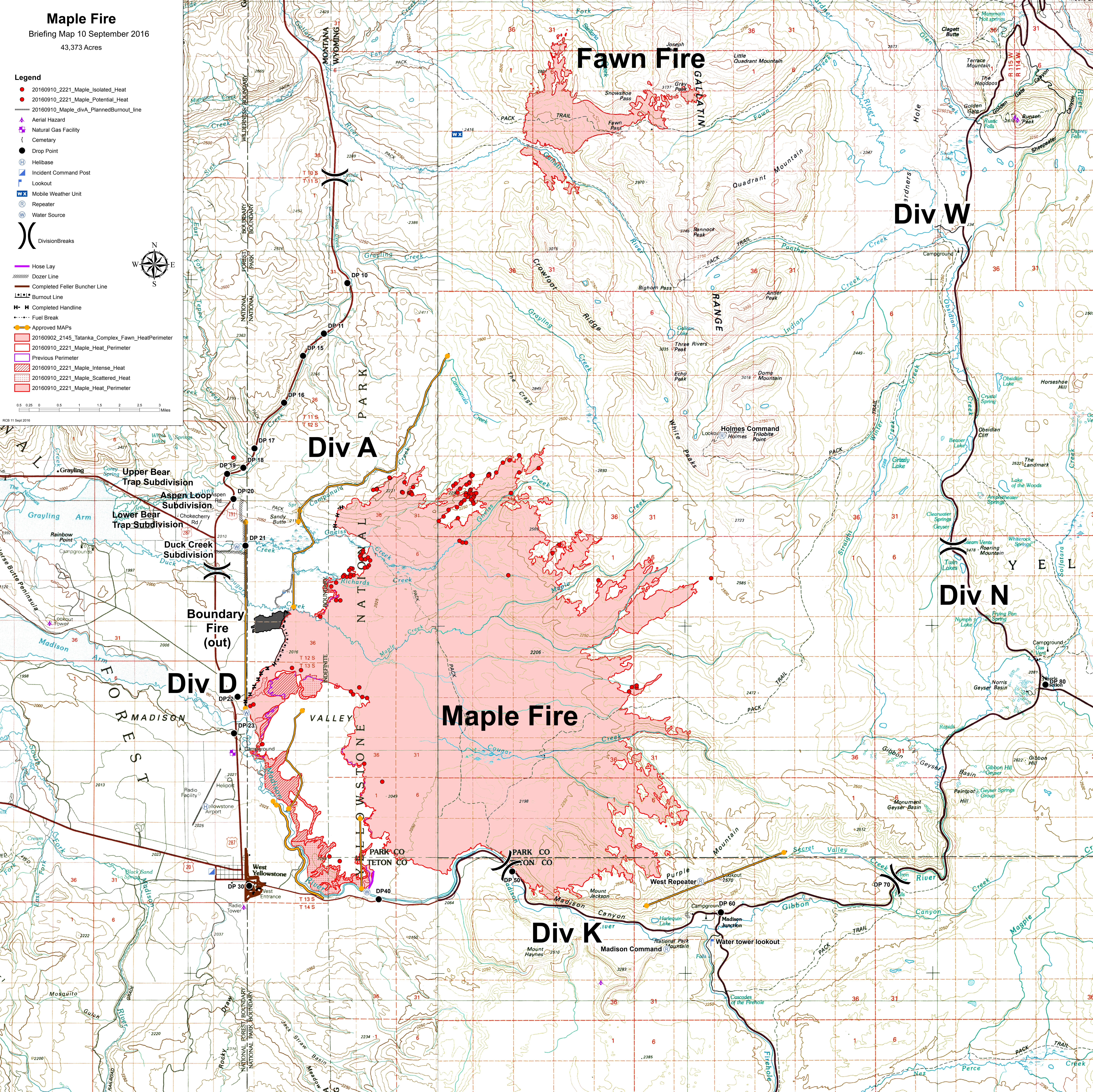
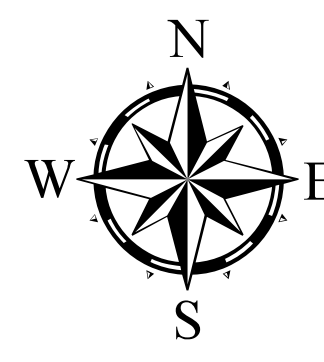
## Legend

- 20160910\_2221\_Maple\_Isolated\_Heat
- 20160910\_2221\_Maple\_Potential\_Heat
- 20160910\_Maple\_div\_A\_PlannedBurnout\_line
- ▲ Aerial Hazard
- Natural Gas Facility
- ⌋ Cemetary
- Drop Point
- ⊕ Helibase
- ⊠ Incident Command Post
- ⌋ Lookout
- ⊠ Mobile Weather Unit
- ⊕ Repeater
- ⊕ Water Source

- ⌋ DivisionBreaks

- Hose Lay
- ⊠ Dozer Line
- Completed Feller Buncher Line
- Burnout Line
- Completed Handline
- Fuel Break
- Approved MAPs
- 20160902\_2145\_Tatanka\_Complex\_Fawn\_HeatPerimeter
- 20160910\_2221\_Maple\_Heat\_Perimeter
- Previous Perimeter
- 20160910\_2221\_Maple\_Intense\_Heat
- 20160910\_2221\_Maple\_Scattered\_Heat
- 20160910\_2221\_Maple\_Heat\_Perimeter

0.5 0.25 0.5 1 1.5 2 2.5 3 Miles



# Fawn Fire

# Div A

# Div W

# Div N

# Maple Fire

# Div K

# Div D

# Upper Bear Trap Subdivision

# Aspen Loop Subdivision

# Lower Bear Trap Subdivision

# Duck Creek Subdivision

# Boundary Fire (out)

# West Yellowstone

# Madison Command

# Water tower lookout

# Div D

# Upper Bear Trap Subdivision

# Aspen Loop Subdivision

# Lower Bear Trap Subdivision

# Duck Creek Subdivision

# Boundary Fire (out)

# West Yellowstone

# Madison Command

# Water tower lookout

RCB 11 Sept 2016