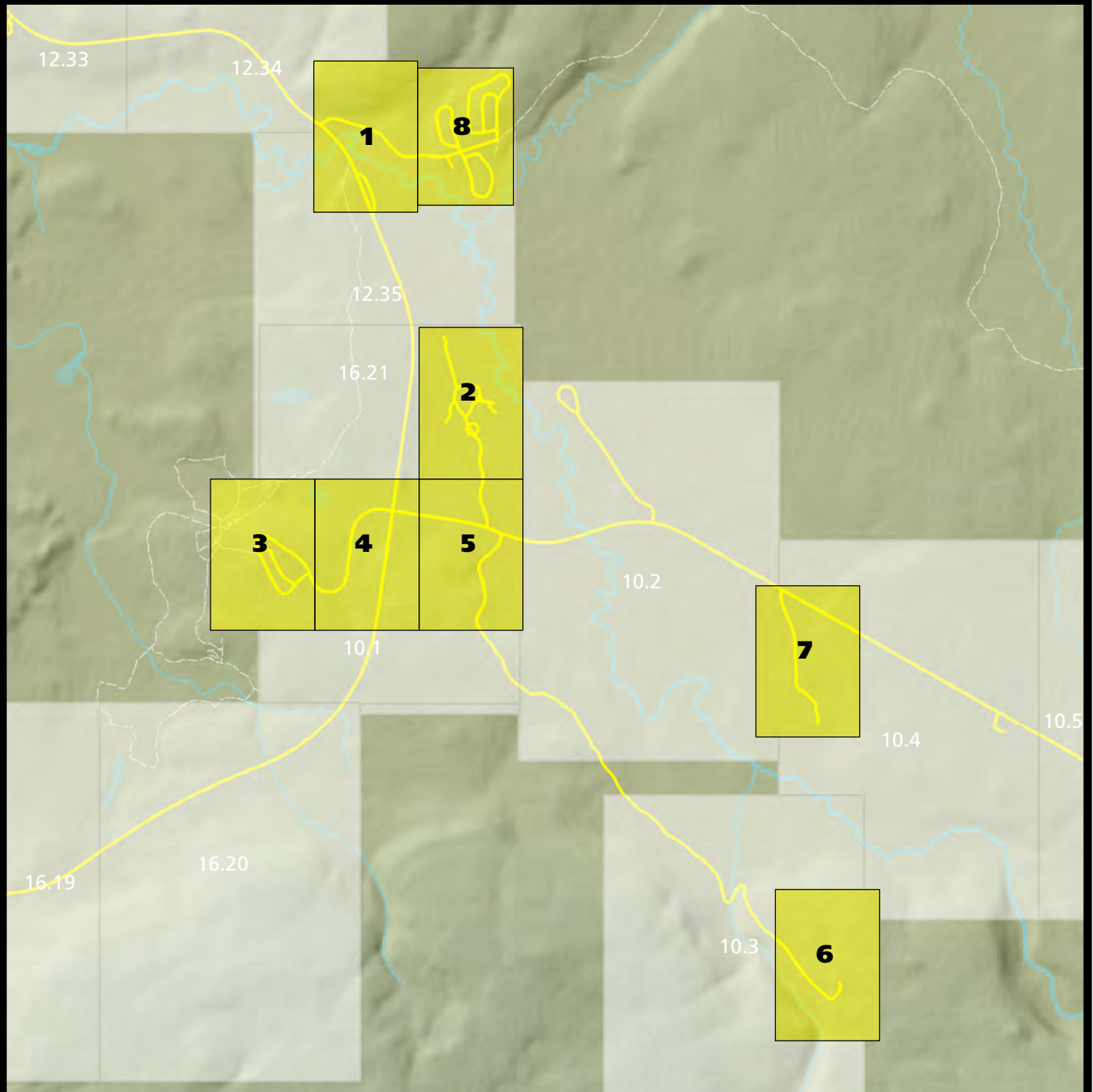


Section 11: Norris Junction



Adjacent Sections:
10 Norris Jct-Canyon Village Rd
12 Mammoth-Norris Jct Rd
16 Norris Jct-Madison Jct Rd

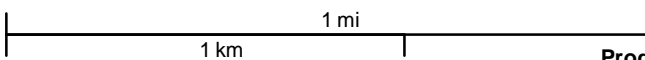
Distance from Norris Jct to:
 Canyon Village: 12mi
 Madison Jct: 14 mi
 Mammoth: 21 mi

Supplemental Pages:
11.8 Norris Campground

— Trails □ Road Corridor Sections
 — Roads ■ Developed Area Sections

Map Symbols Used on Section Pages

- | | | | |
|-------------------|-------------|----------------------|------------|
| ★ Ranger Landmark | ~ Creek | — Primary Road | ⊕ Building |
| ♥ AED Location | ~ River | — Secondary Road | 🌊 Lake |
| 🚒 Fire Hydrant | - - - Trail | - - - Primitive Road | |
| | | — Restricted Road | |



Last Updated: 12/4/2015

Produced by the Yellowstone Spatial Analysis Center (307) 344-2246
 K:\Rangers_Law_Enforcement\ParkWide_Mapbook\ArcGIS_Projects\11_Norris\11_Norris_COVER.mxd

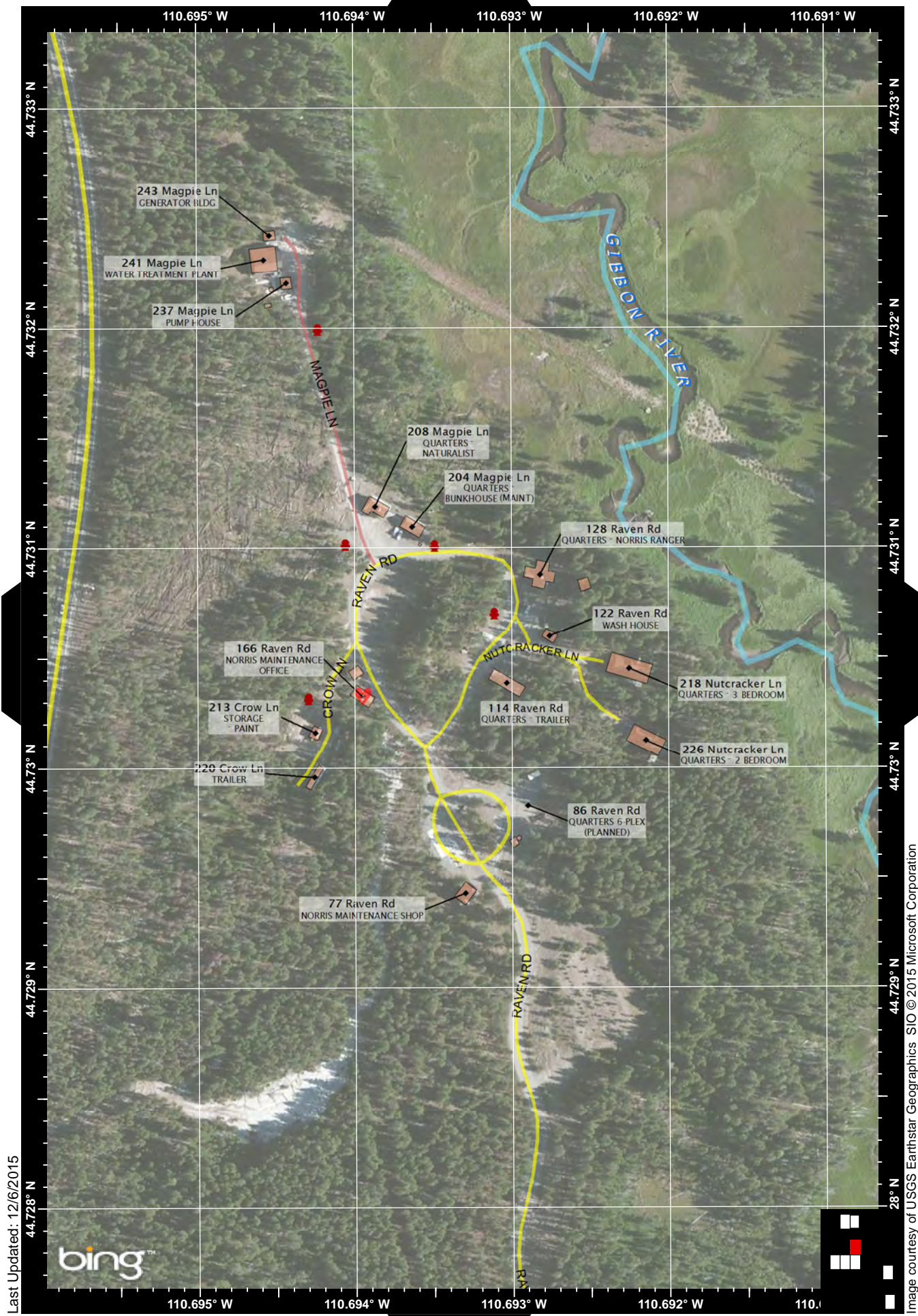


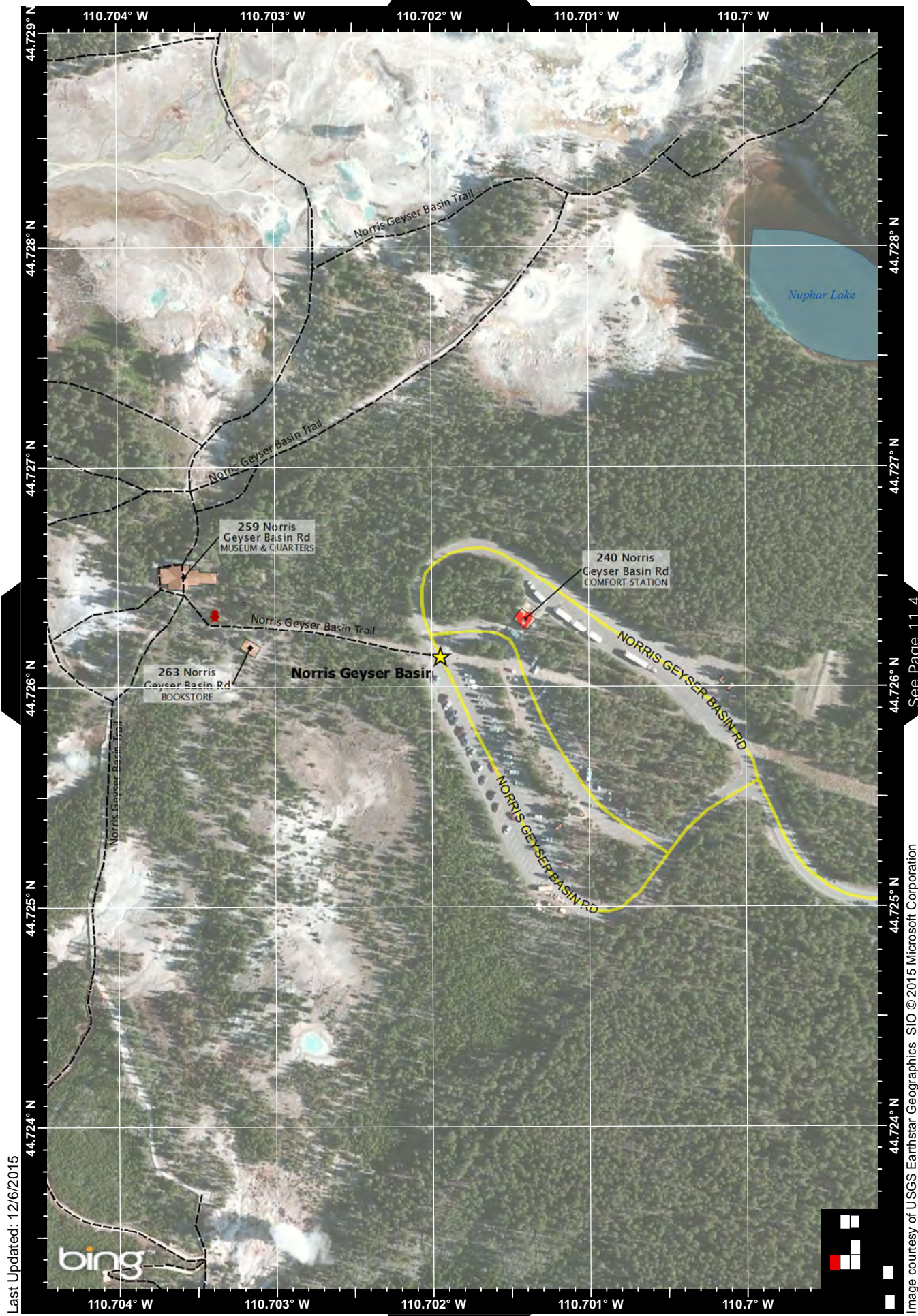
Last Updated: 12/6/2015

bing

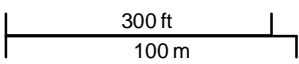
See Page 11.6

Image courtesy of USGS Earthstar Geographics SIO © 2015 Microsoft Corporation





Last Updated: 12/6/2015

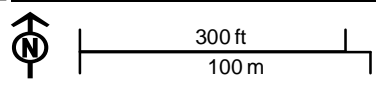


See Page 11.4

Image courtesy of USGS Earthstar Geographics SIO © 2015 Microsoft Corporation



Last Updated: 12/6/2015



110.695° W 110.694° W 110.693° W 110.692° W 110.691° W

44.728° N

44.728° N

44.727° N

44.727° N

44.726° N

44.726° N

44.725° N

44.725° N

44.724° N

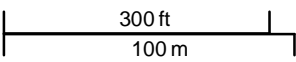
44.724° N

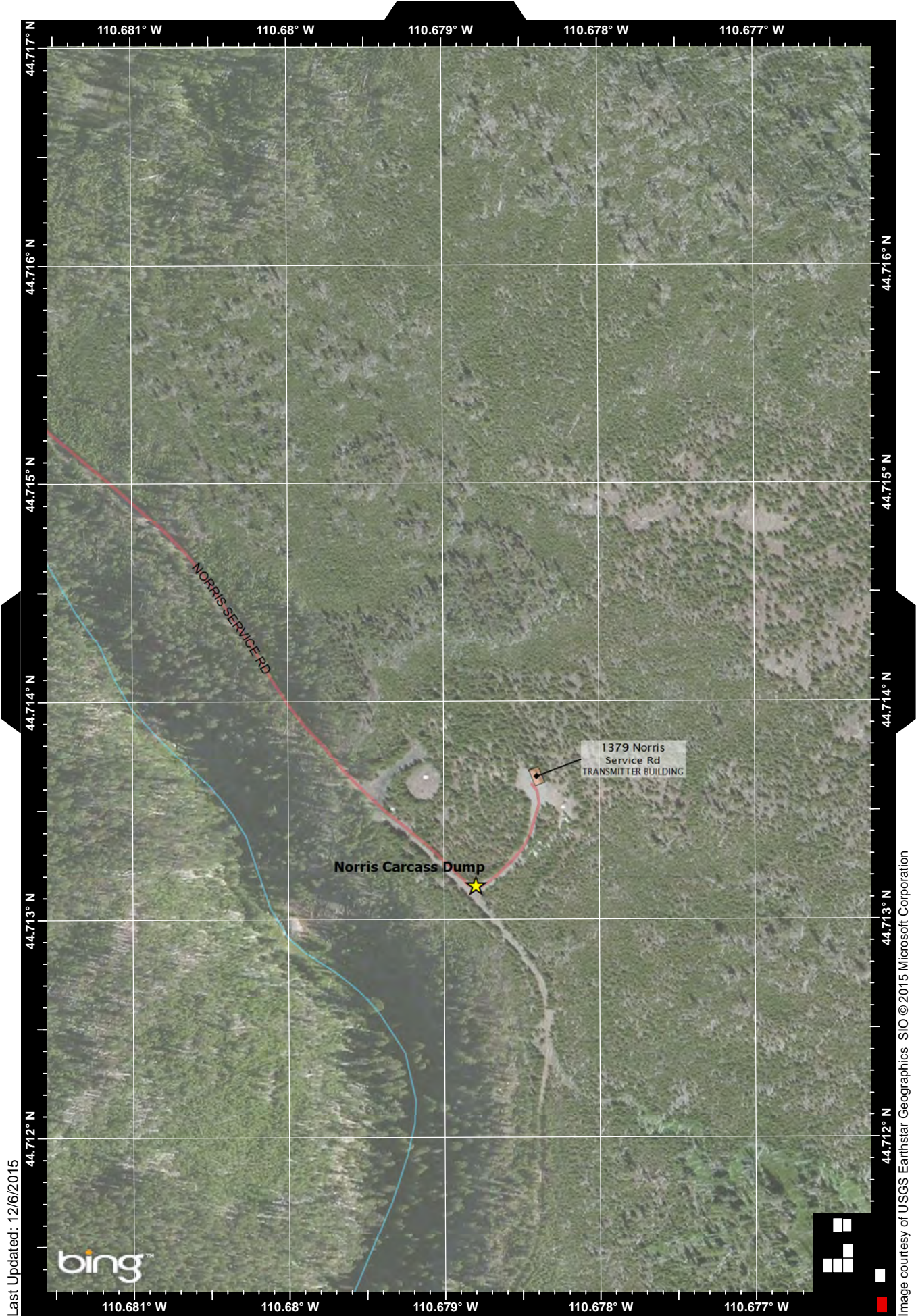


See Page 11.4

Last Updated: 12/6/2015

Image courtesy of USGS Earthstar Geographics SIO © 2015 Microsoft Corporation





Last Updated: 12/6/2015

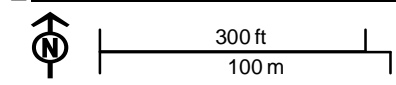


Image courtesy of USGS Earthstar Geographics SIO © 2015 Microsoft Corporation

110.682° W 110.681° W 110.68° W 110.679° W 110.678° W 110.677° W

44.725° N

44.725° N

44.724° N

44.724° N

44.723° N

44.723° N

44.722° N

44.722° N

44.721° N

44.721° N

110.682° W 110.681° W 110.68° W 110.679° W 110.678° W



Last Updated: 12/6/2015

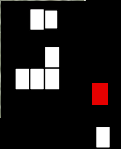
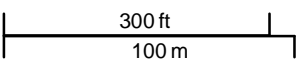


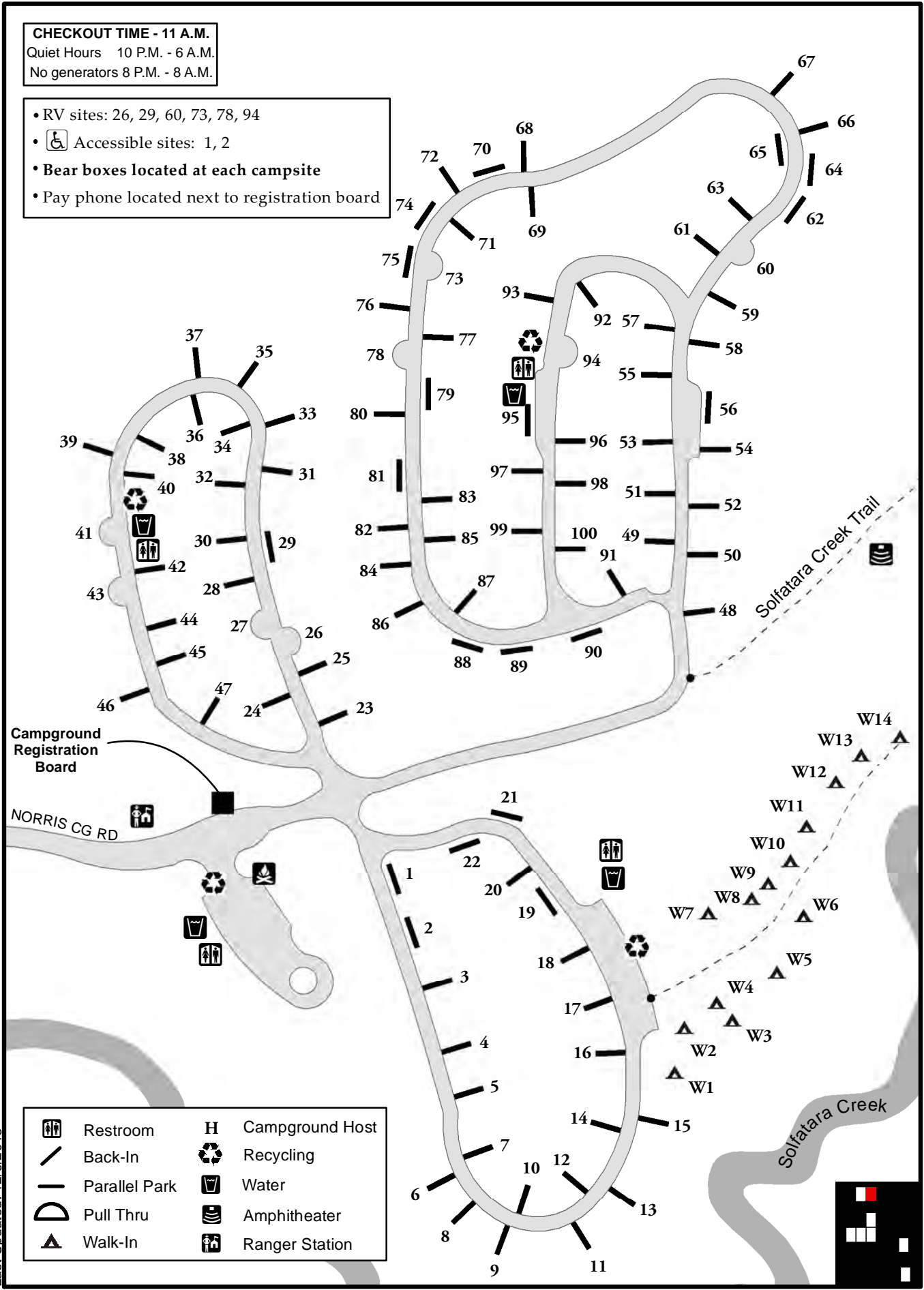
Image courtesy of USGS Earthstar Geographics SIO © 2015 Microsoft Corporation

CHECKOUT TIME - 11 A.M.

Quiet Hours 10 P.M. - 6 A.M.

No generators 8 P.M. - 8 A.M.

- RV sites: 26, 29, 60, 73, 78, 94
- ♿ Accessible sites: 1, 2
- Bear boxes located at each campsite
- Pay phone located next to registration board



Last Updated: 12/6/2015