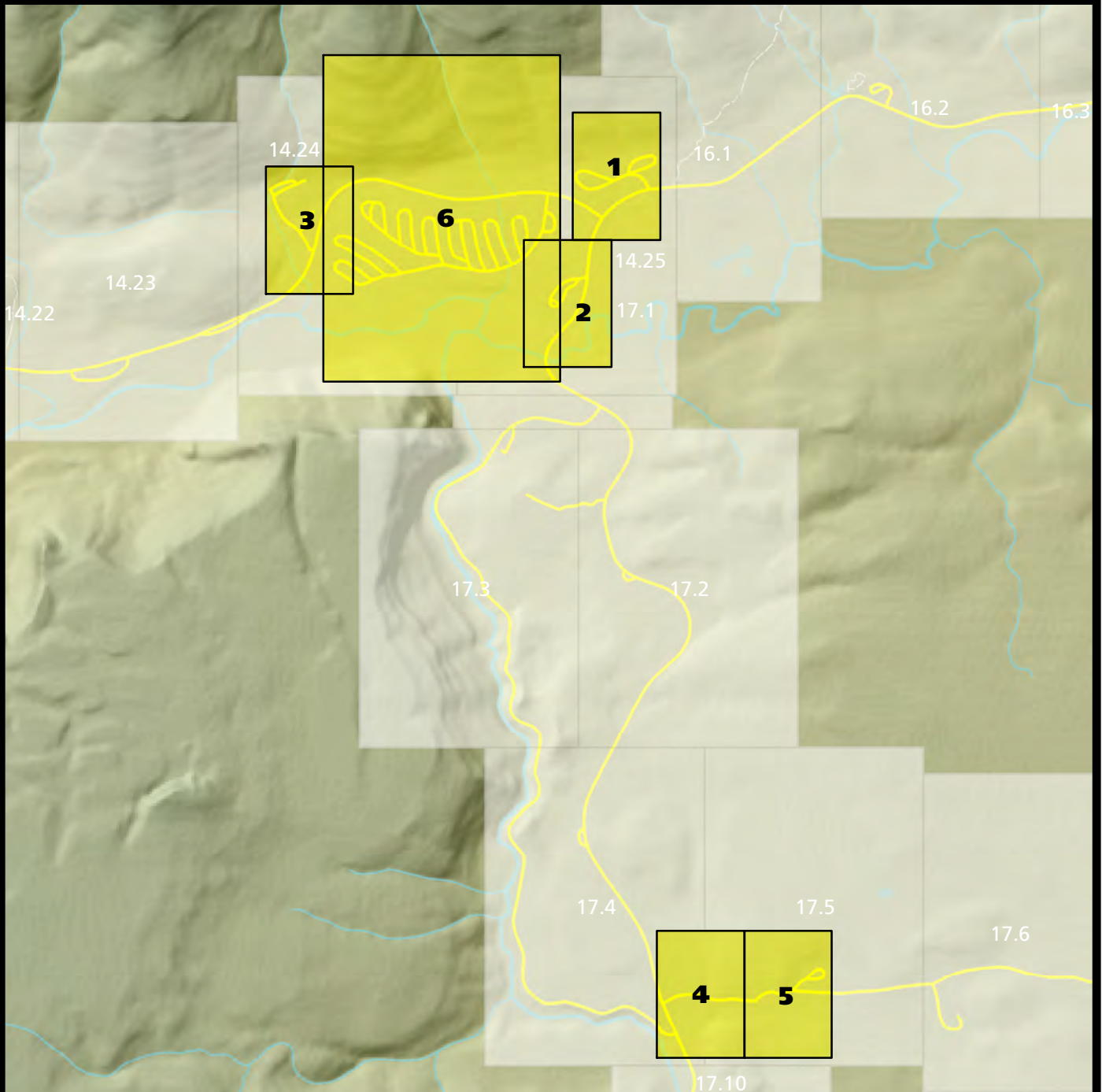


Section 15: Madison Junction



Adjacent Sections:

- 14** West Entrance Rd
- 16** Norris Jct-Madison Jct Rd
- 17** Madison Jct-West Thumb Jct Rd

Distance from Madison Jct to:

- West Yellowstone: 14 mi
- Norris Jct: 14 mi
- Old Faithful: 16 mi
- West Thumb Jct: 33 mi

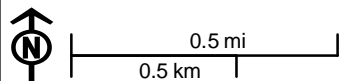
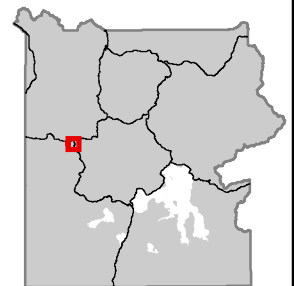
Supplemental Pages:

- 15.6** Madison Campground

- Trails
- Road Corridor Sections
- Roads
- Developed Area Sections

Map Symbols Used on Section Pages

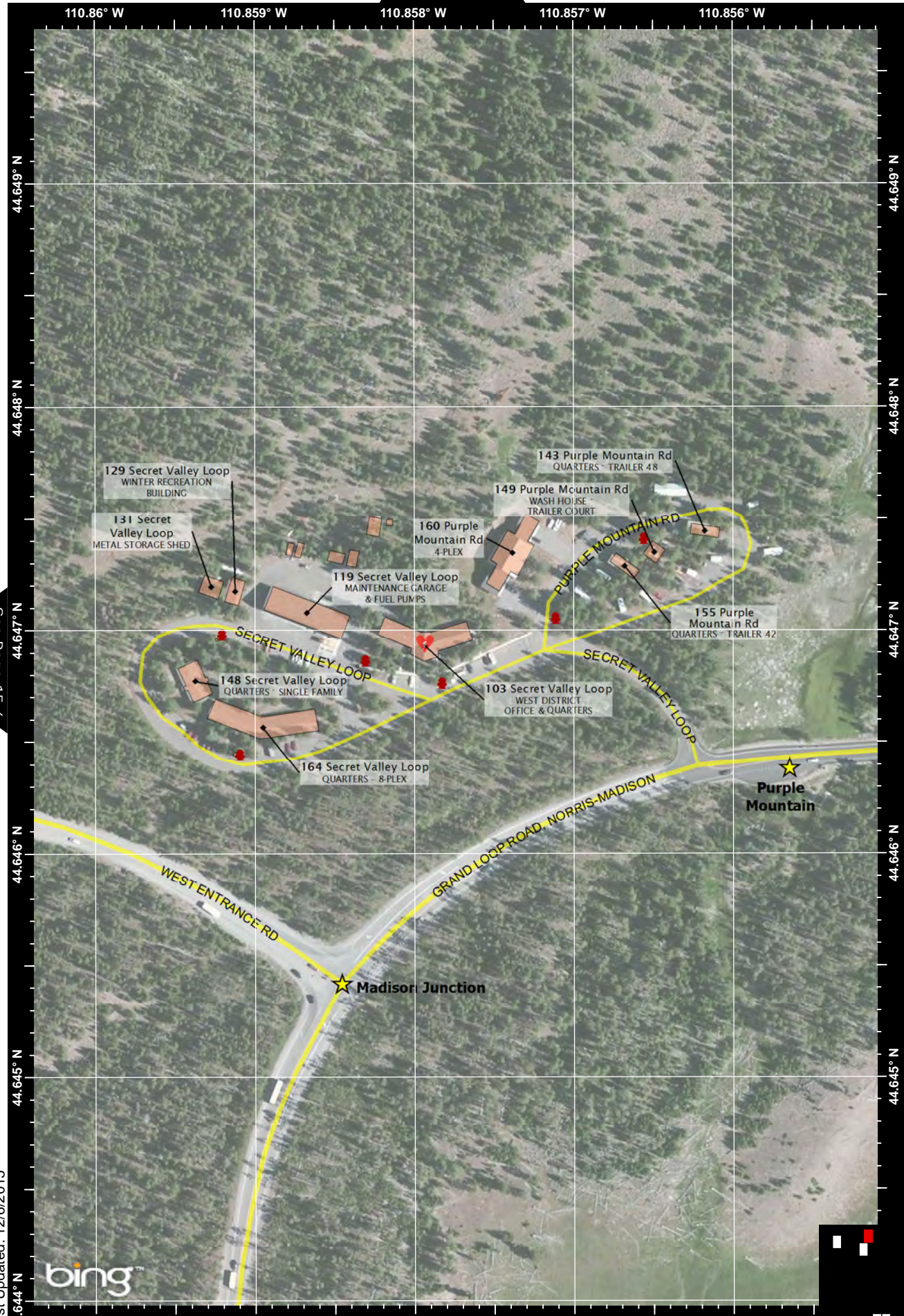
- | | | | |
|-------------------|-----------|--------------------|------------|
| ★ Ranger Landmark | ~ Creek | — Primary Road | ☪ Lake |
| ♥ AED Location | ~ River | — Secondary Road | ⊕ Building |
| ⚡ Fire Hydrant | --- Trail | --- Primitive Road | |
| | | — Restricted Road | |



Last Updated: 12/4/2015

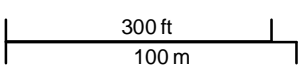
Produced by the Yellowstone Spatial Analysis Center (307) 344-2246

K:\Rangers_Law_Enforcement\ParkWide_Mapbook\ArcGIS_Projects\15_Madison\15_MadisonJct_COVER.mxd



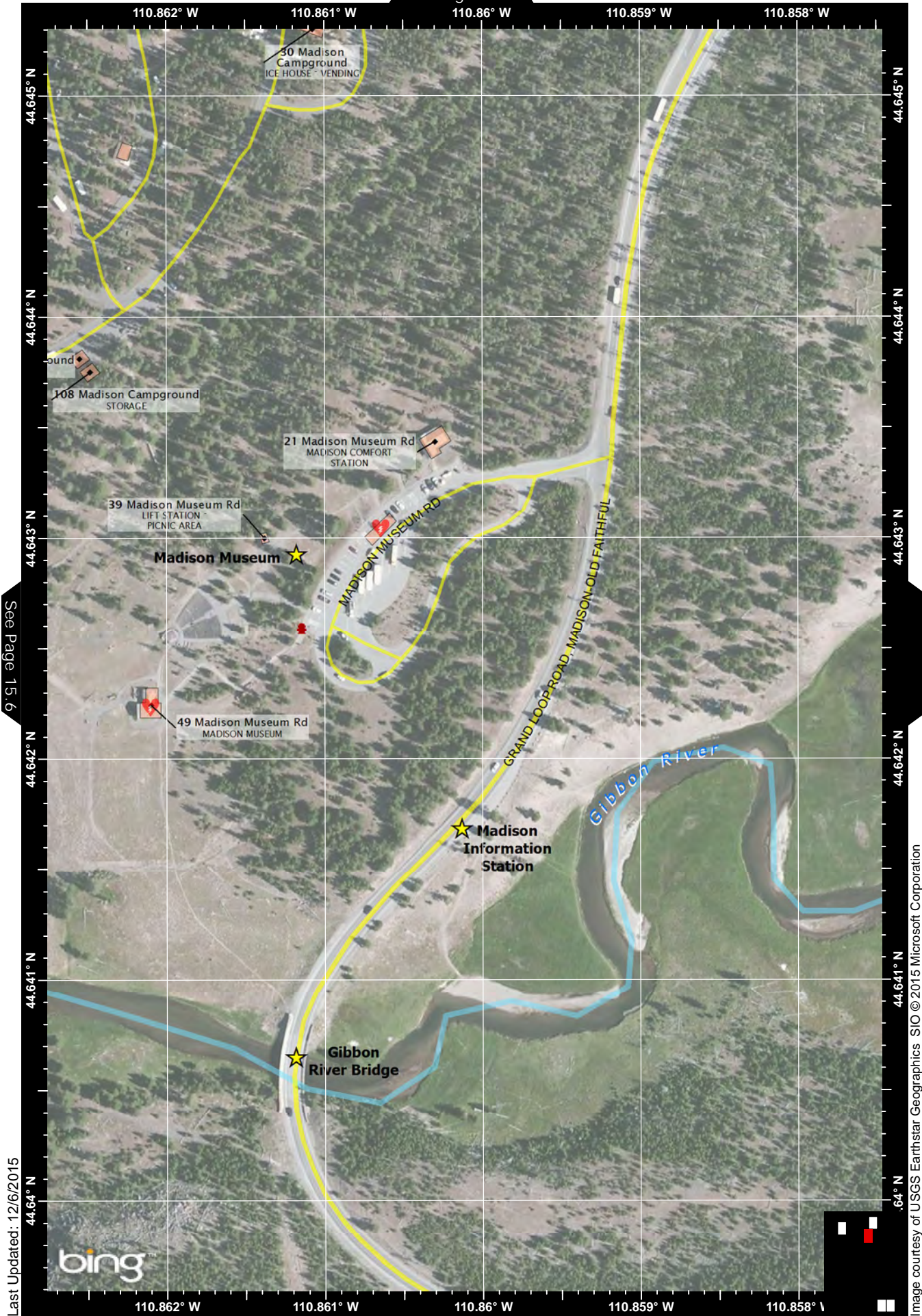
See Page 15.6

Last Updated: 12/6/2015



See Page 15.2

Image courtesy of USGS Earthstar Geographics SIO © 2015 Microsoft Corporation



See Page 15.6

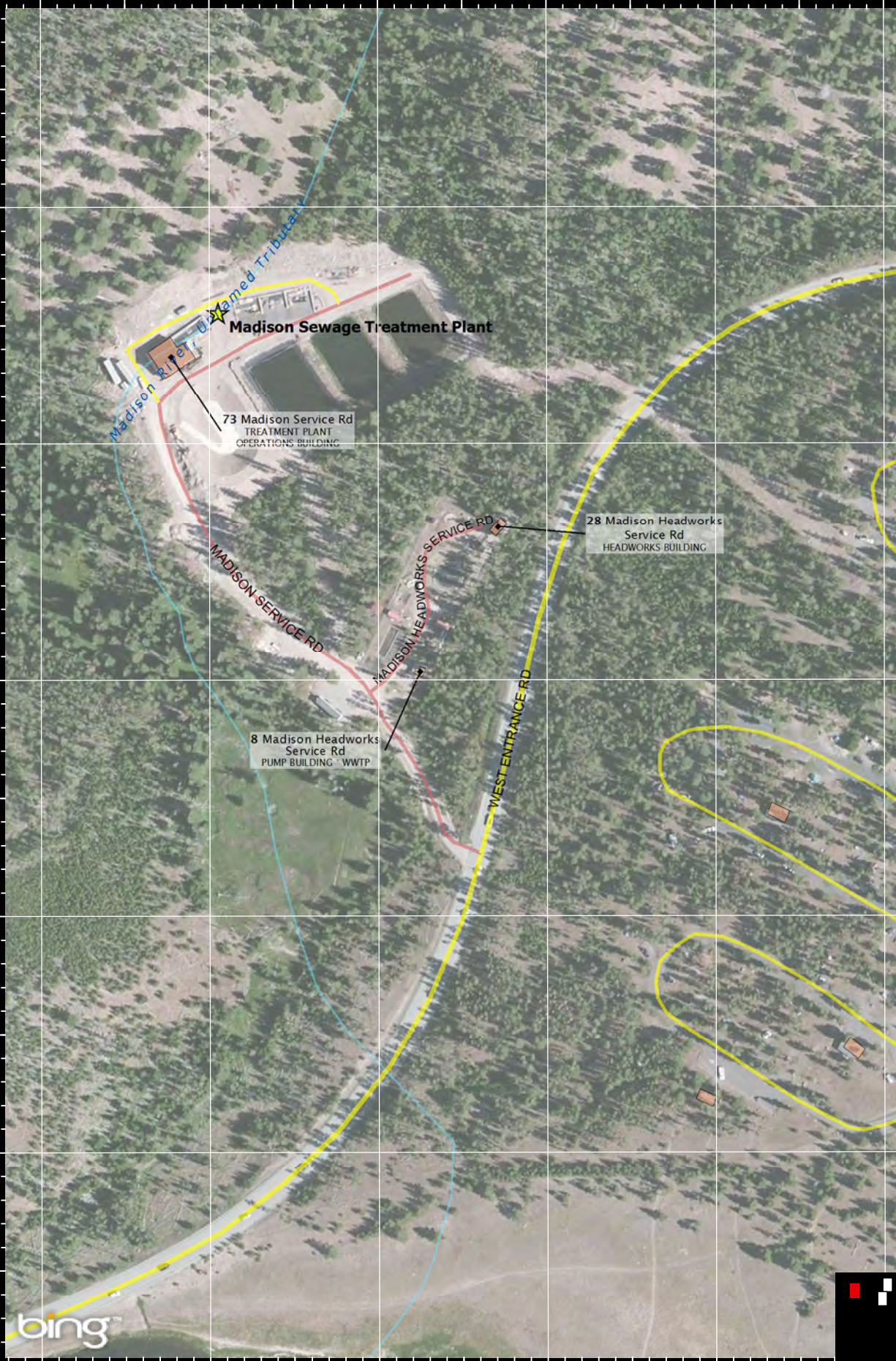
Last Updated: 12/6/2015

Image courtesy of USGS Earthstar Geographics SIO © 2015 Microsoft Corporation

110.875° W 110.874° W 110.873° W 110.872° W 110.871° W 110.87° W

44.647° N
44.646° N
44.645° N
44.644° N
44.643° N

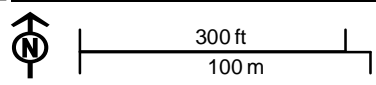
44.647° N
44.646° N
44.645° N
44.644° N
44.643° N

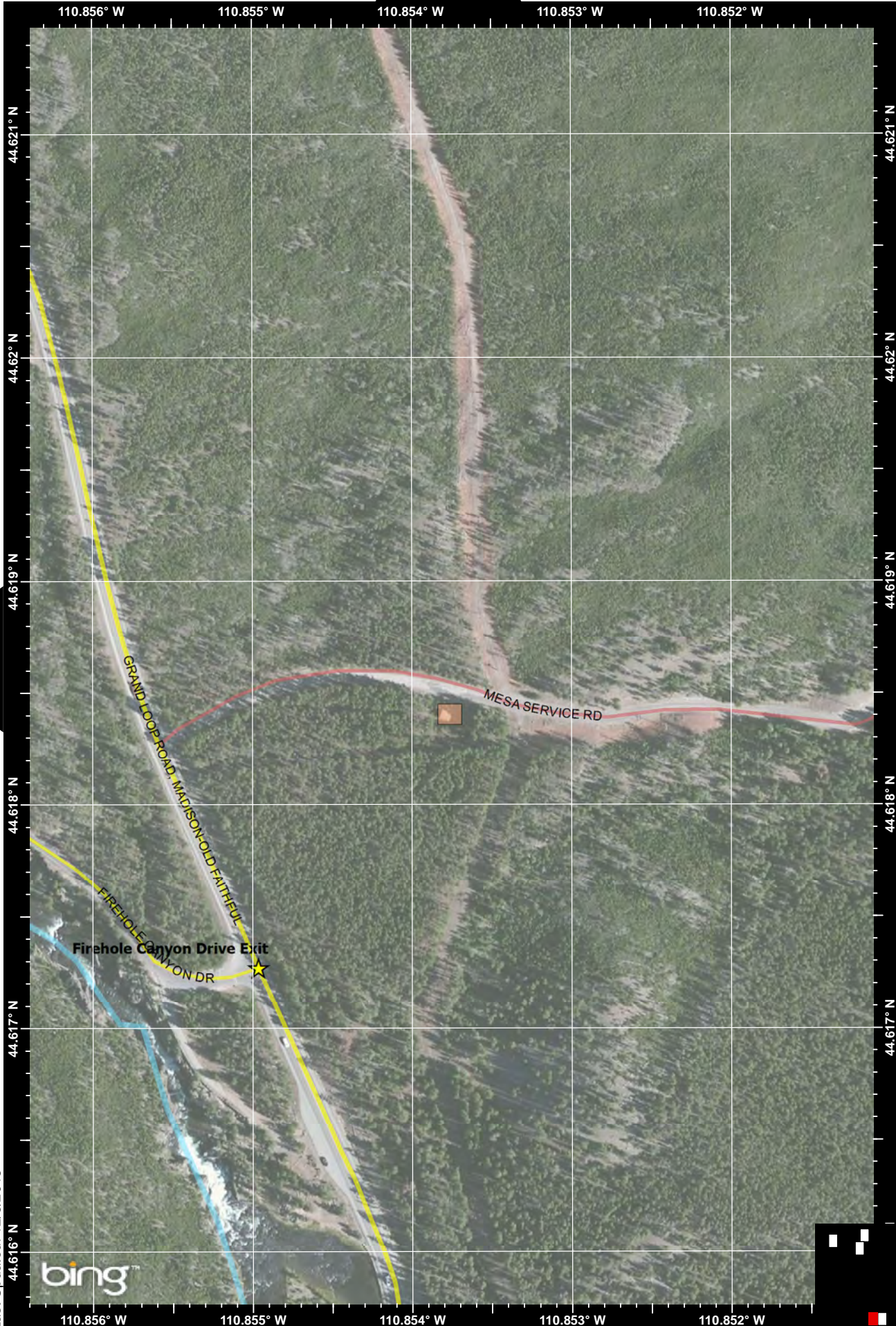


See Page 15.6

Image courtesy of USGS Earthstar Geographics SIO © 2015 Microsoft Corporation

Last Updated: 12/6/2015

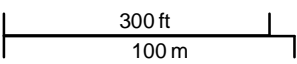


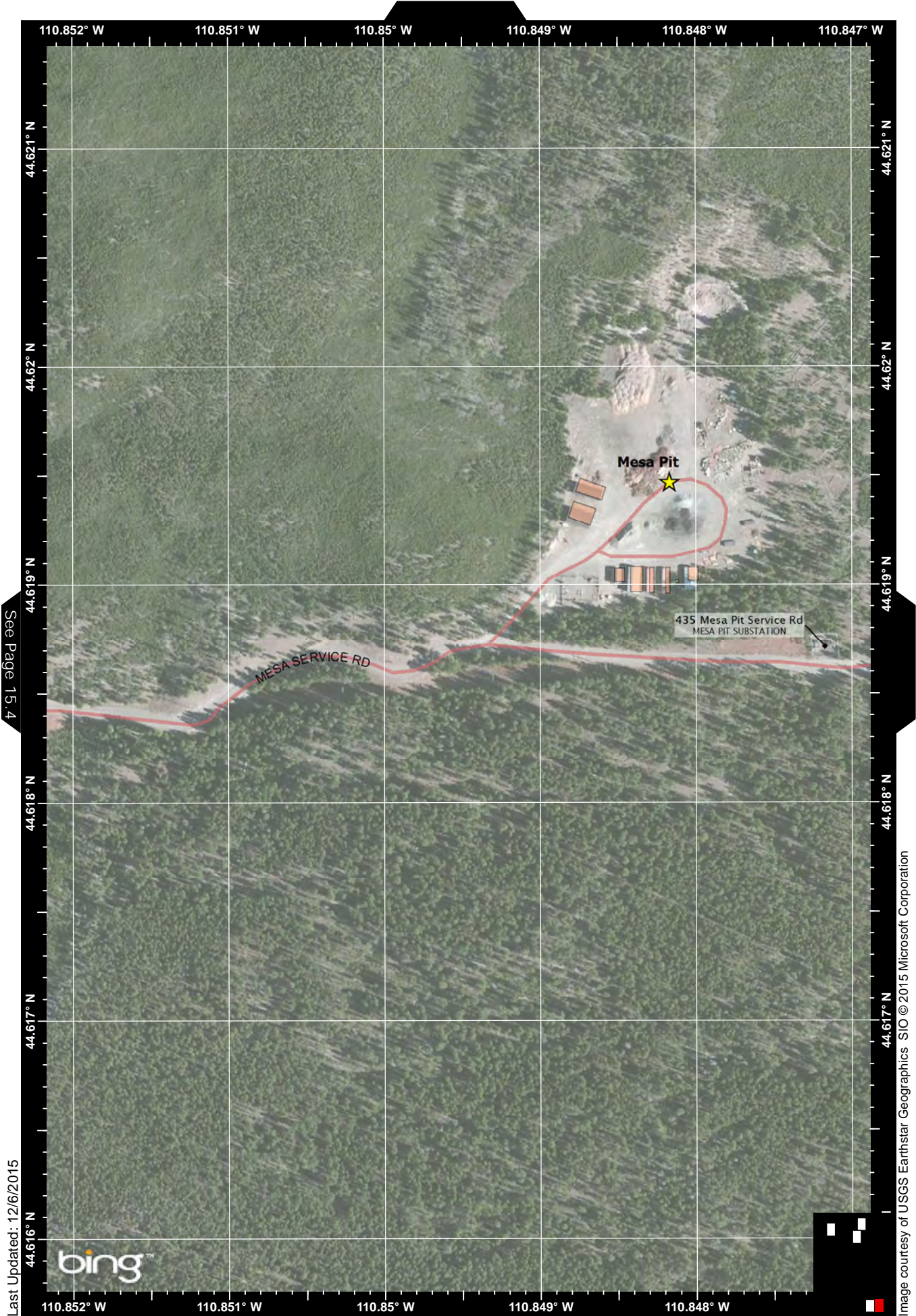


Last Updated: 12/6/2015

See Page 15.5

Image courtesy of USGS Earthstar Geographics SIO © 2015 Microsoft Corporation





See Page 15.4

Last Updated: 12/6/2015

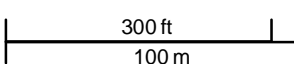
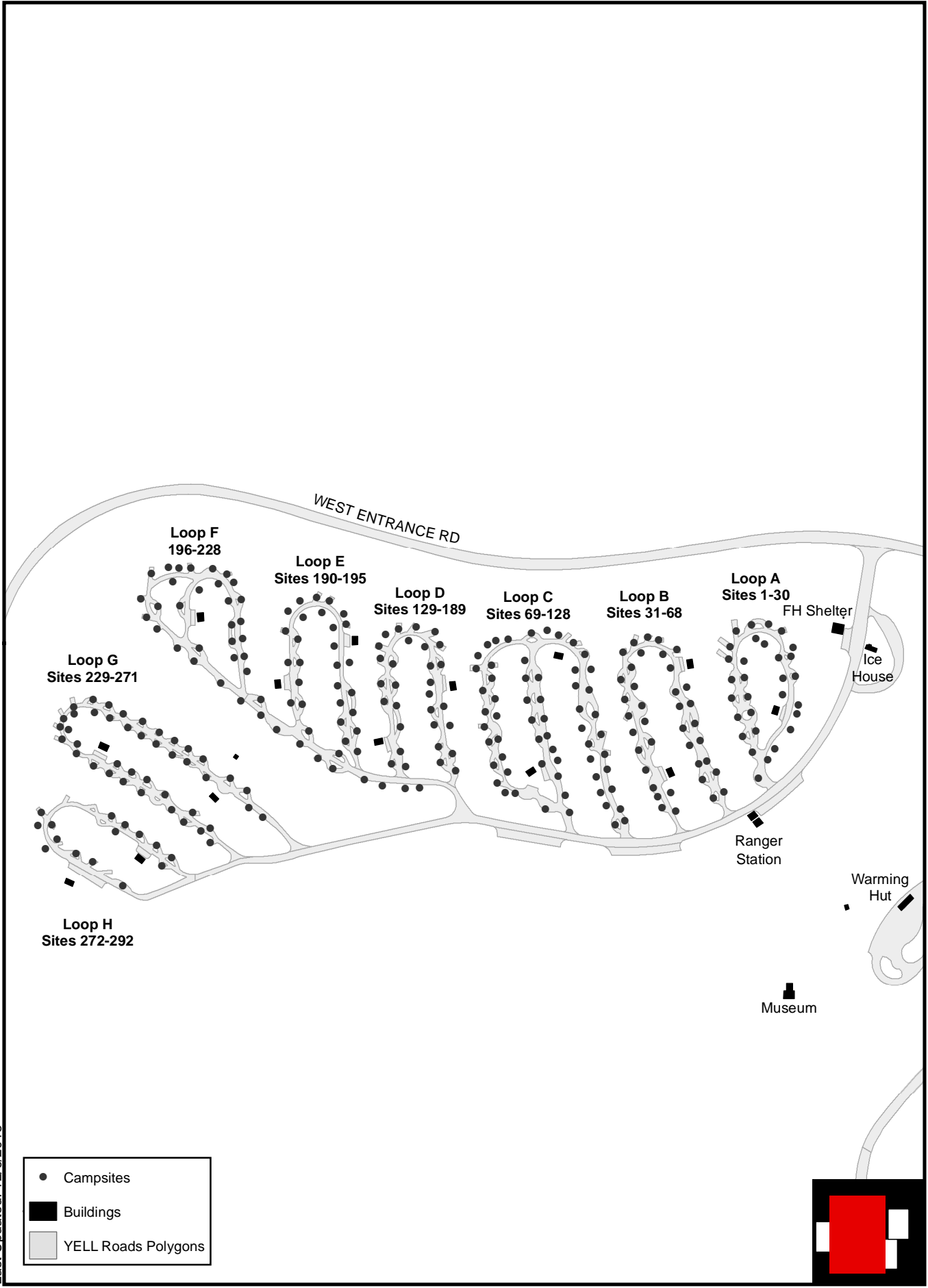


Image courtesy of USGS Earthstar Geographics SIO © 2015 Microsoft Corporation



Last Updated: 12/6/2015

