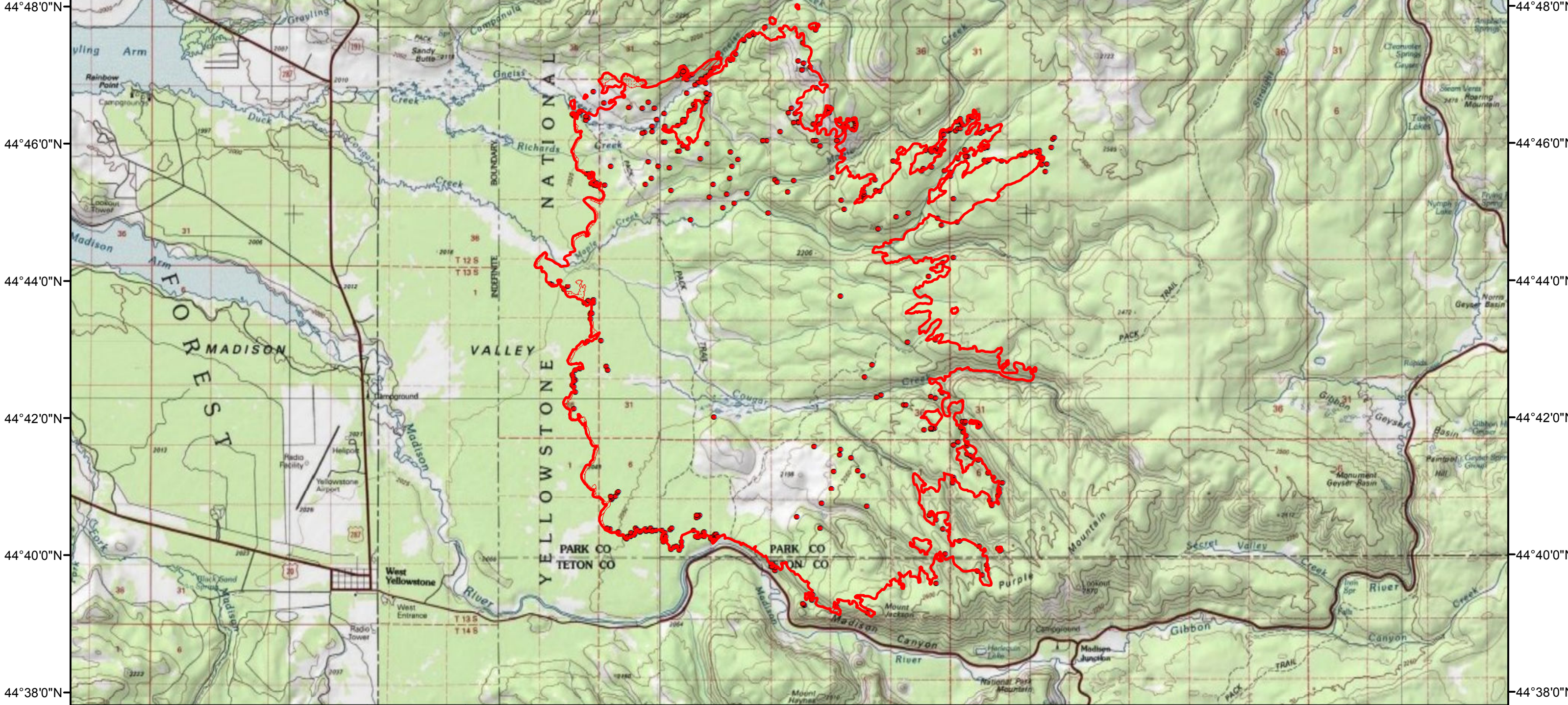





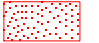

111°12'0"W 111°10'0"W 111°8'0"W 111°6'0"W 111°4'0"W 111°2'0"W 111°0'0"W 110°58'0"W 110°56'0"W 110°54'0"W 110°52'0"W 110°50'0"W 110°48'0"W 110°46'0"W 110°44'0"W

Maple
Incident # - WY-YNP-001601
Infrared Imagery Map
Imagery Flown:
August 27, 2016 -0056 (MDT)
Interpreted Acres: 31,029 Acres
IRIN: Bob Brantlinger



44°48'0"N 44°46'0"N 44°44'0"N 44°42'0"N 44°40'0"N 44°38'0"N

Legend

	Heat Perimeter		Isolated Heat Source
	Intense Heat		Scattered Heat Source
	IR Cloud Cover		

