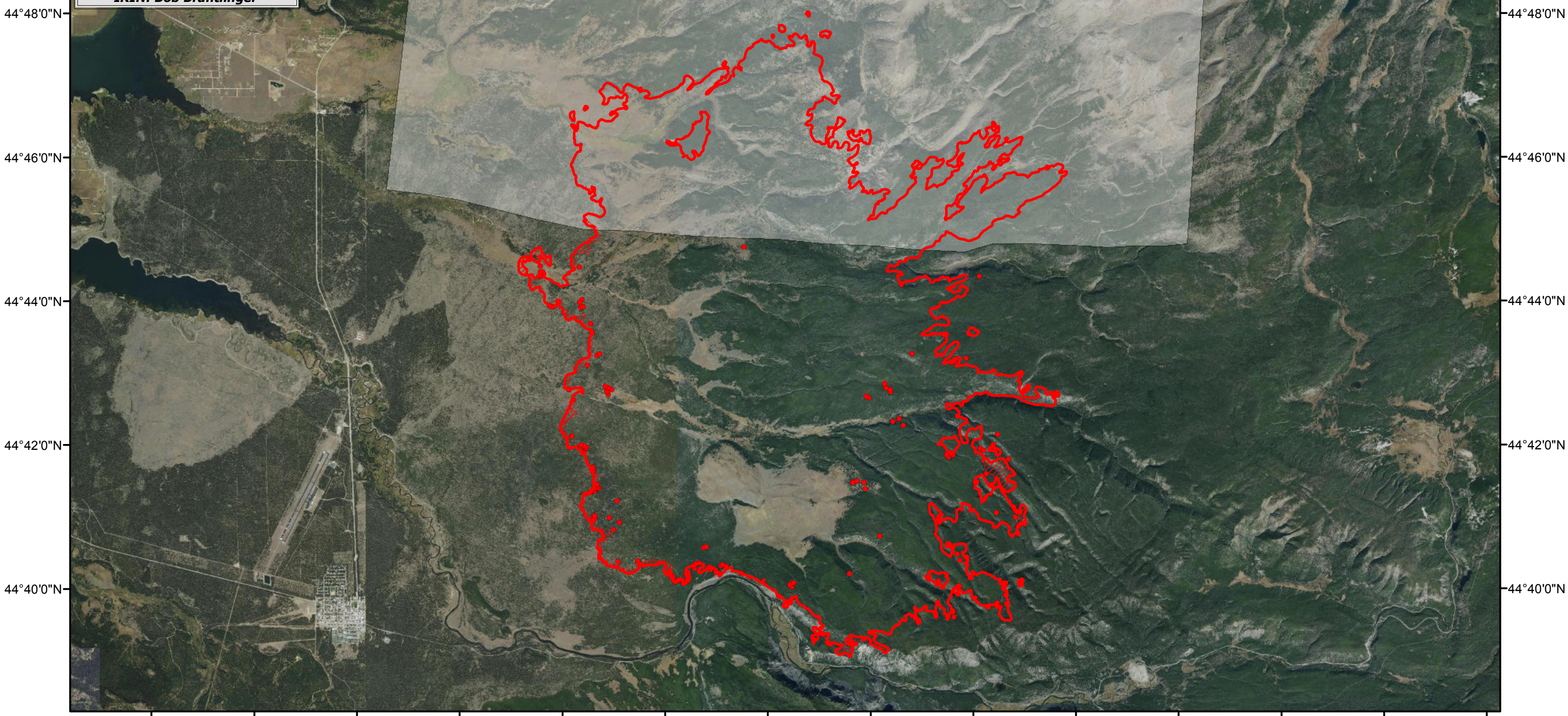


111°10'0"W 111°8'0"W 111°6'0"W 111°4'0"W 111°2'0"W 111°0'0"W 110°58'0"W 110°56'0"W 110°54'0"W 110°52'0"W 110°50'0"W 110°48'0"W 110°46'0"W 110°44'0"W

Maple
Incident # - WY-YNP-001601
Infrared Imagery Map
Imagery Flown:
August 27, 2016 -2104 (MDT)
Interpreted Acres: 31,404 Acres
IRIN: Bob Brantlinger



44°48'0"N
44°46'0"N
44°44'0"N
44°42'0"N
44°40'0"N

44°48'0"N
44°46'0"N
44°44'0"N
44°42'0"N
44°40'0"N

111°10'0"W 111°8'0"W 111°6'0"W 111°4'0"W 111°2'0"W 111°0'0"W 110°58'0"W 110°56'0"W 110°54'0"W 110°52'0"W 110°50'0"W 110°48'0"W 110°46'0"W 110°44'0"W

Legend

-  Heat Perimeter
-  Intense Heat
-  IR - Not Scanned
-  Isolated Heat Source
-  Scattered Heat Source

