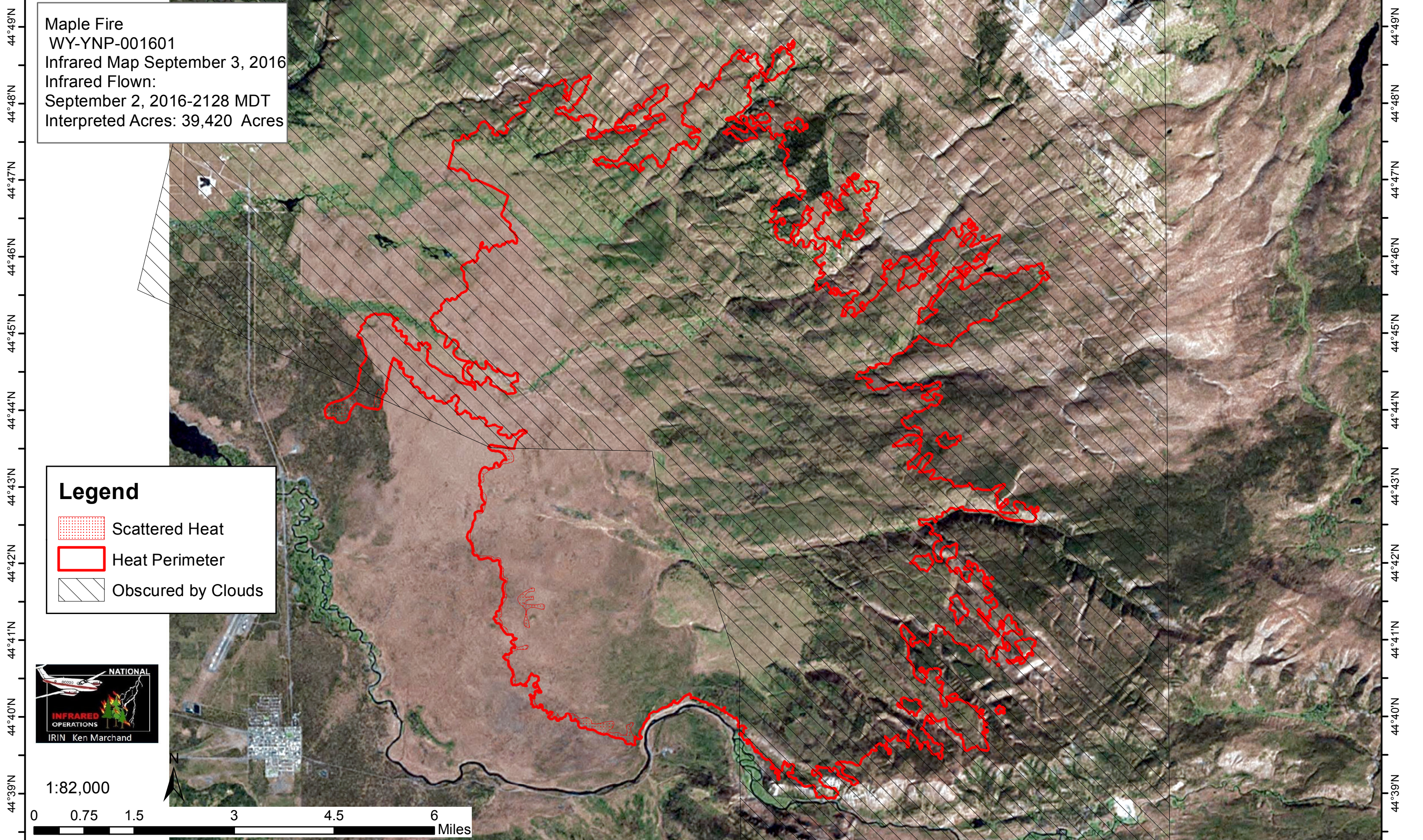





111°10'W 111°9'W 111°8'W 111°7'W 111°6'W 111°5'W 111°4'W 111°3'W 111°2'W 111°1'W 111°0'W 110°59'W 110°58'W 110°57'W 110°56'W 110°55'W 110°54'W 110°53'W 110°52'W 110°51'W 110°50'W 110°49'W 110°48'W 110°46'30'W

Maple Fire  
WY-YNP-001601  
Infrared Map September 3, 2016  
Infrared Flown:  
September 2, 2016-2128 MDT  
Interpreted Acres: 39,420 Acres

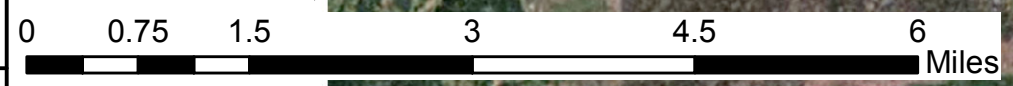


**Legend**

-  Scattered Heat
-  Heat Perimeter
-  Obscured by Clouds



1:82,000



111°10'W 111°9'W 111°8'W 111°7'W 111°6'W 111°5'W 111°4'W 111°3'W 111°2'W 111°1'W 111°0'W 110°59'W 110°58'W 110°57'W 110°56'W 110°55'W 110°54'W 110°53'W 110°52'W 110°51'W 110°50'W 110°49'W 110°48'W 110°46'30'W

44°49'N  
44°48'N  
44°47'N  
44°46'N  
44°45'N  
44°44'N  
44°43'N  
44°42'N  
44°41'N  
44°40'N  
44°39'N

44°49'N  
44°48'N  
44°47'N  
44°46'N  
44°45'N  
44°44'N  
44°43'N  
44°42'N  
44°41'N  
44°40'N  
44°39'N