
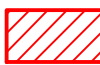


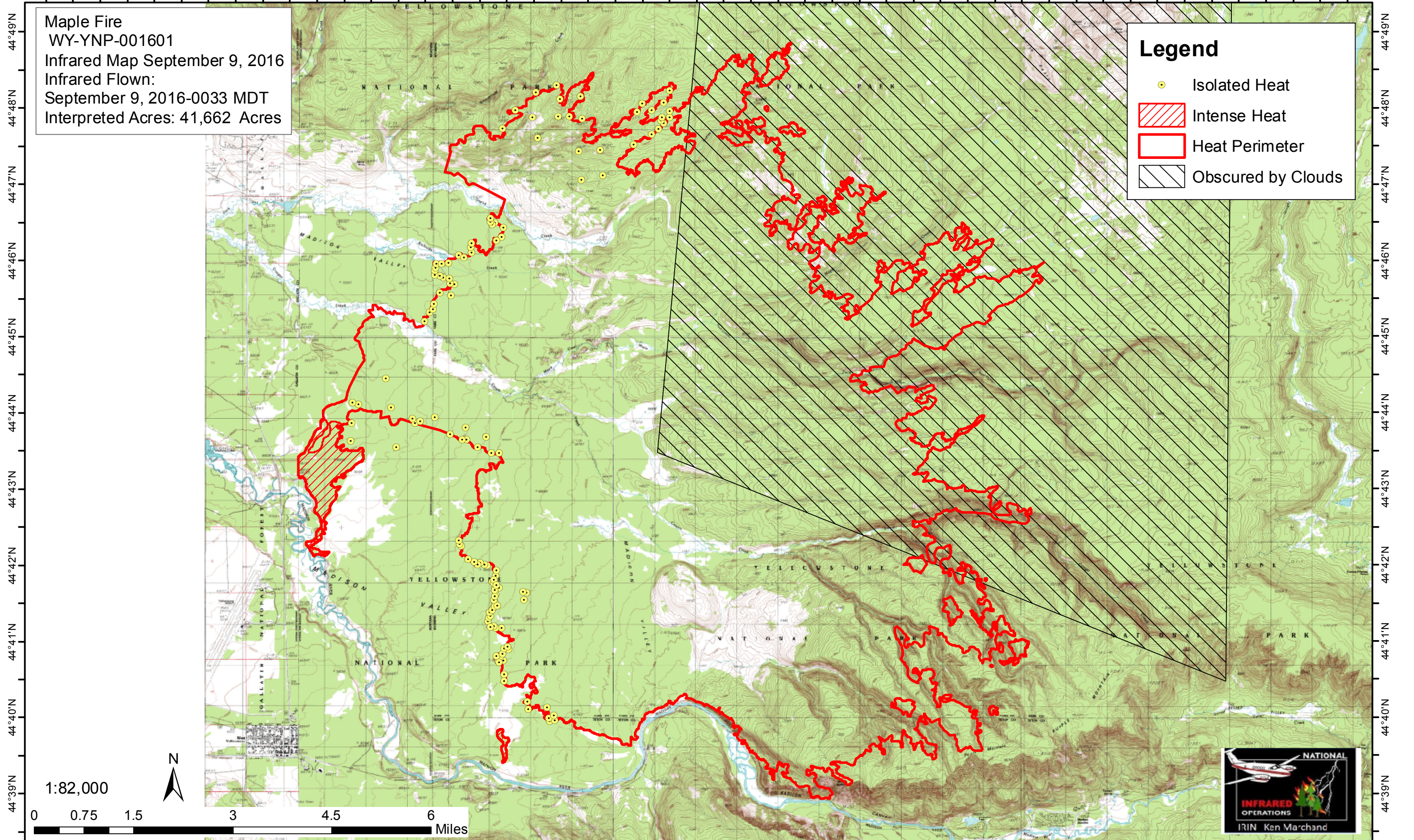


111°10'W 111°9'W 111°8'W 111°7'W 111°6'W 111°5'W 111°4'W 111°3'W 111°2'W 111°1'W 111°0'W 110°59'W 110°58'W 110°57'W 110°56'W 110°55'W 110°54'W 110°53'W 110°52'W 110°51'W 110°50'W 110°49'W 110°48'W 110°46'30"W

Maple Fire  
WY-YNP-001601  
Infrared Map September 9, 2016  
Infrared Flown:  
September 9, 2016-0033 MDT  
Interpreted Acres: 41,662 Acres

**Legend**

-  Isolated Heat
-  Intense Heat
-  Heat Perimeter
-  Obscured by Clouds



1:82,000  
0 0.75 1.5 3 4.5 6 Miles



111°10'W 111°9'W 111°8'W 111°7'W 111°6'W 111°5'W 111°4'W 111°3'W 111°2'W 111°1'W 111°0'W 110°59'W 110°58'W 110°57'W 110°56'W 110°55'W 110°54'W 110°53'W 110°52'W 110°51'W 110°50'W 110°49'W 110°48'W 110°46'30"W