


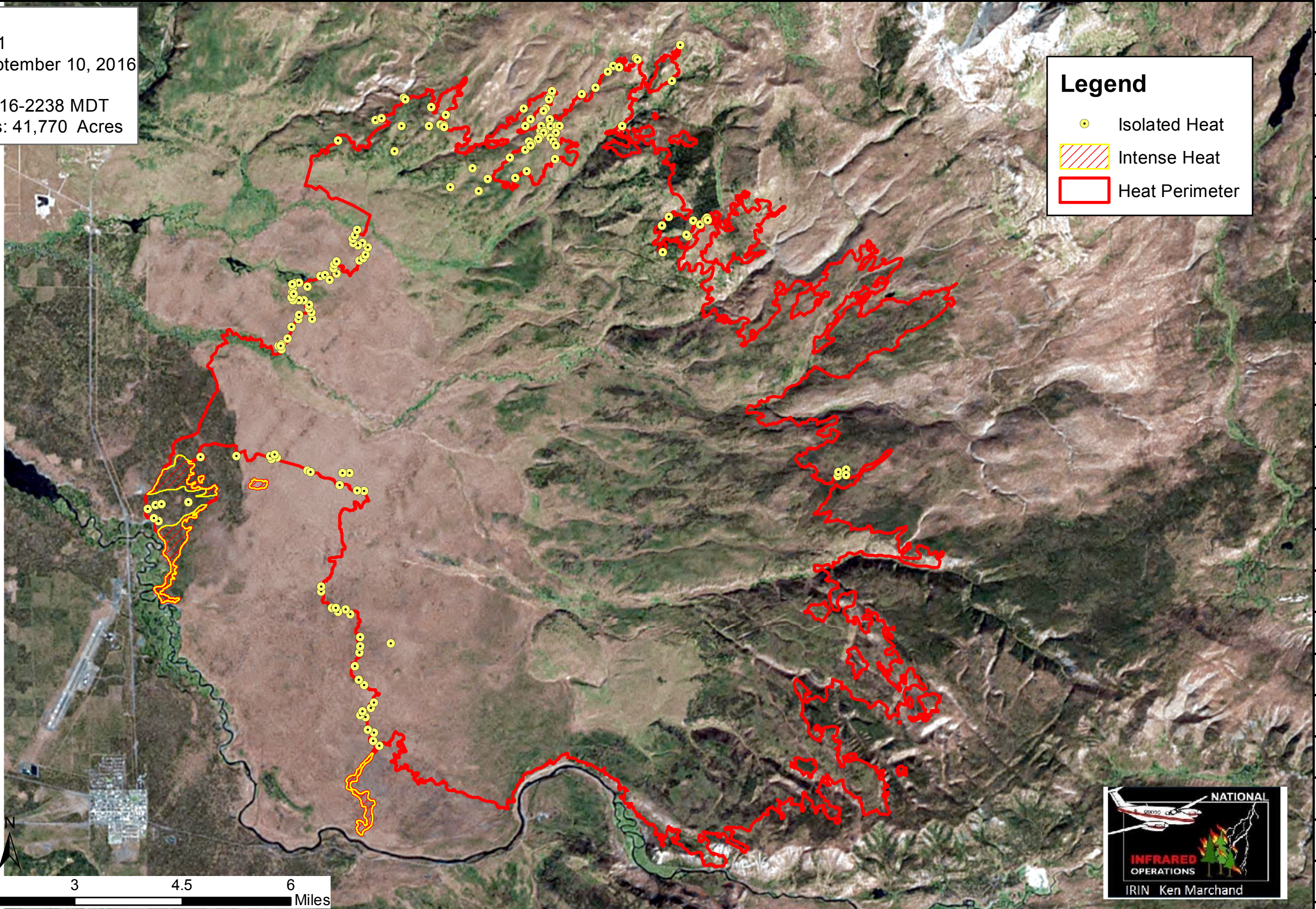


111°10'W 111°9'W 111°8'W 111°7'W 111°6'W 111°5'W 111°4'W 111°3'W 111°2'W 111°1'W 111°0'W 110°59'W 110°58'W 110°57'W 110°56'W 110°55'W 110°54'W 110°53'W 110°52'W 110°51'W 110°50'W 110°49'W 110°48'W 110°46'30"W

Maple Fire
WY-YNP-001601
Infrared Map September 10, 2016
Infrared Flown:
September 9, 2016-2238 MDT
Interpreted Acres: 41,770 Acres

Legend

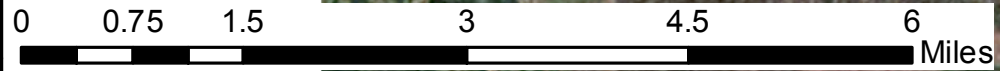
-  Isolated Heat
-  Intense Heat
-  Heat Perimeter



44°49'N
44°48'N
44°47'N
44°46'N
44°45'N
44°44'N
44°43'N
44°42'N
44°41'N
44°40'N
44°39'N

44°49'N
44°48'N
44°47'N
44°46'N
44°45'N
44°44'N
44°43'N
44°42'N
44°41'N
44°40'N
44°39'N

1:82,000



111°10'W 111°9'W 111°8'W 111°7'W 111°6'W 111°5'W 111°4'W 111°3'W 111°2'W 111°1'W 111°0'W 110°59'W 110°58'W 110°57'W 110°56'W 110°55'W 110°54'W 110°53'W 110°52'W 110°51'W 110°50'W 110°49'W 110°48'W 110°46'30"W