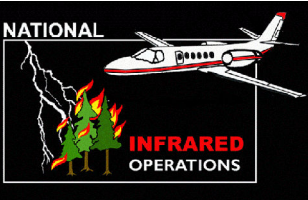


111°9'0"W 111°7'30"W 111°6'0"W 111°4'30"W 111°3'0"W 111°1'30"W 111°0'0"W 110°58'30"W 110°57'0"W 110°55'30"W 110°54'0"W 110°52'30"W 110°51'0"W 110°49'30"W 110°48'0"W


NATIONAL

INFRARED OPERATIONS

Infrared Map
MAPLE
 WY-YNP-001611
 IR Flight: September 15, 2016 2126 MDT
 Acres : 43,614
 Interpreter : Jim Grace

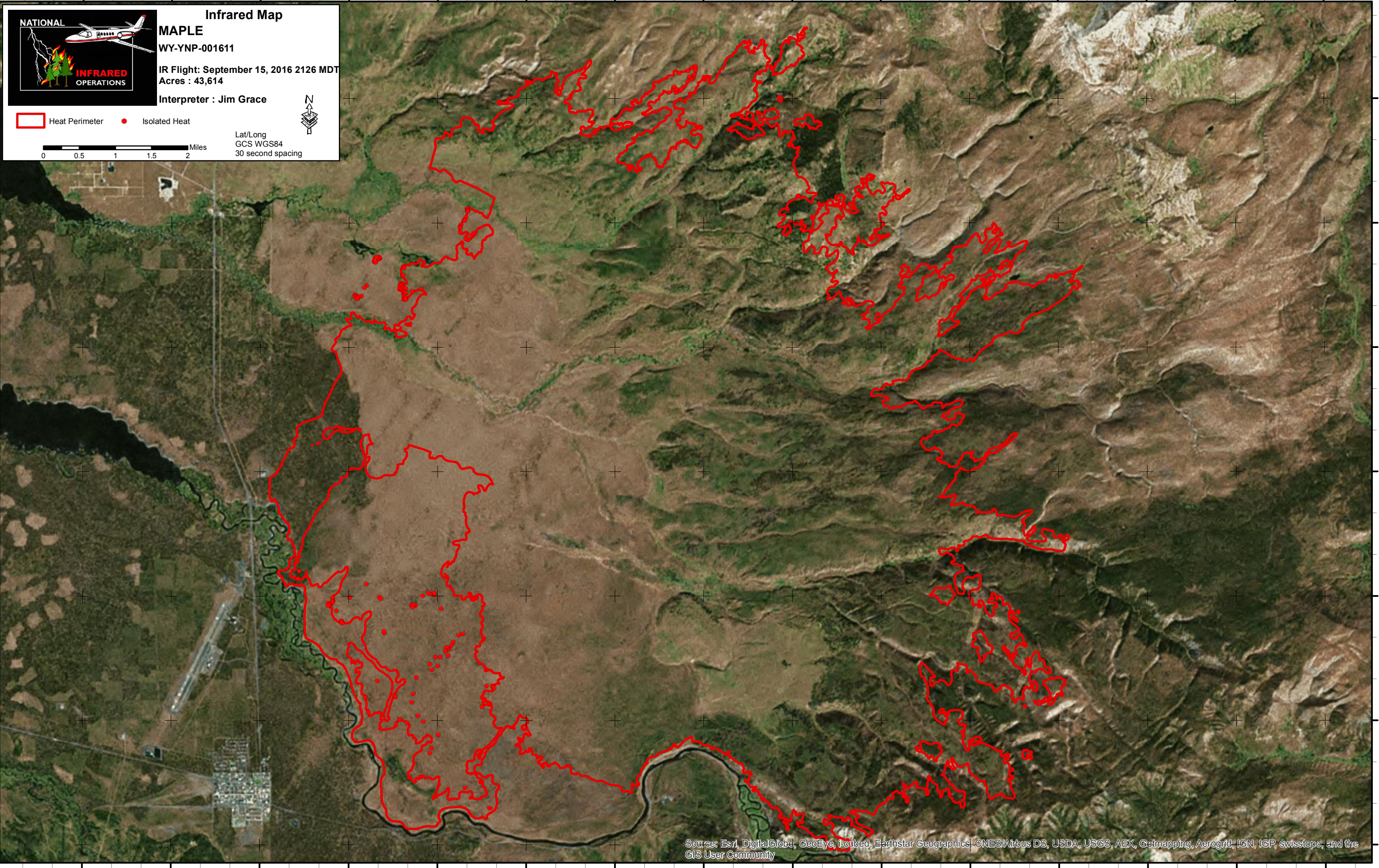
Heat Perimeter Isolated Heat

0 0.5 1 1.5 2 Miles

Lat/Long
 GCS WGS84
 30 second spacing



44°48'0"N
44°46'30"N
44°45'0"N
44°43'30"N
44°42'0"N
44°40'30"N
44°39'0"N



44°48'0"N
44°46'30"N
44°45'0"N
44°43'30"N
44°42'0"N
44°40'30"N
44°39'0"N

111°9'0"W 111°7'30"W 111°6'0"W 111°4'30"W 111°3'0"W 111°1'30"W 111°0'0"W 110°58'30"W 110°57'0"W 110°55'30"W 110°54'0"W 110°52'30"W 110°51'0"W 110°49'30"W 110°48'0"W

Source: Esri, DigitalGlobe, GeoEye, I-cubed, Earthstar Geographics, CNES/Airbus DS, USDA, USGS, AEX, Gcmapping, AeroGRID, IGN, ICP, swisstopo, and the GIS User Community