


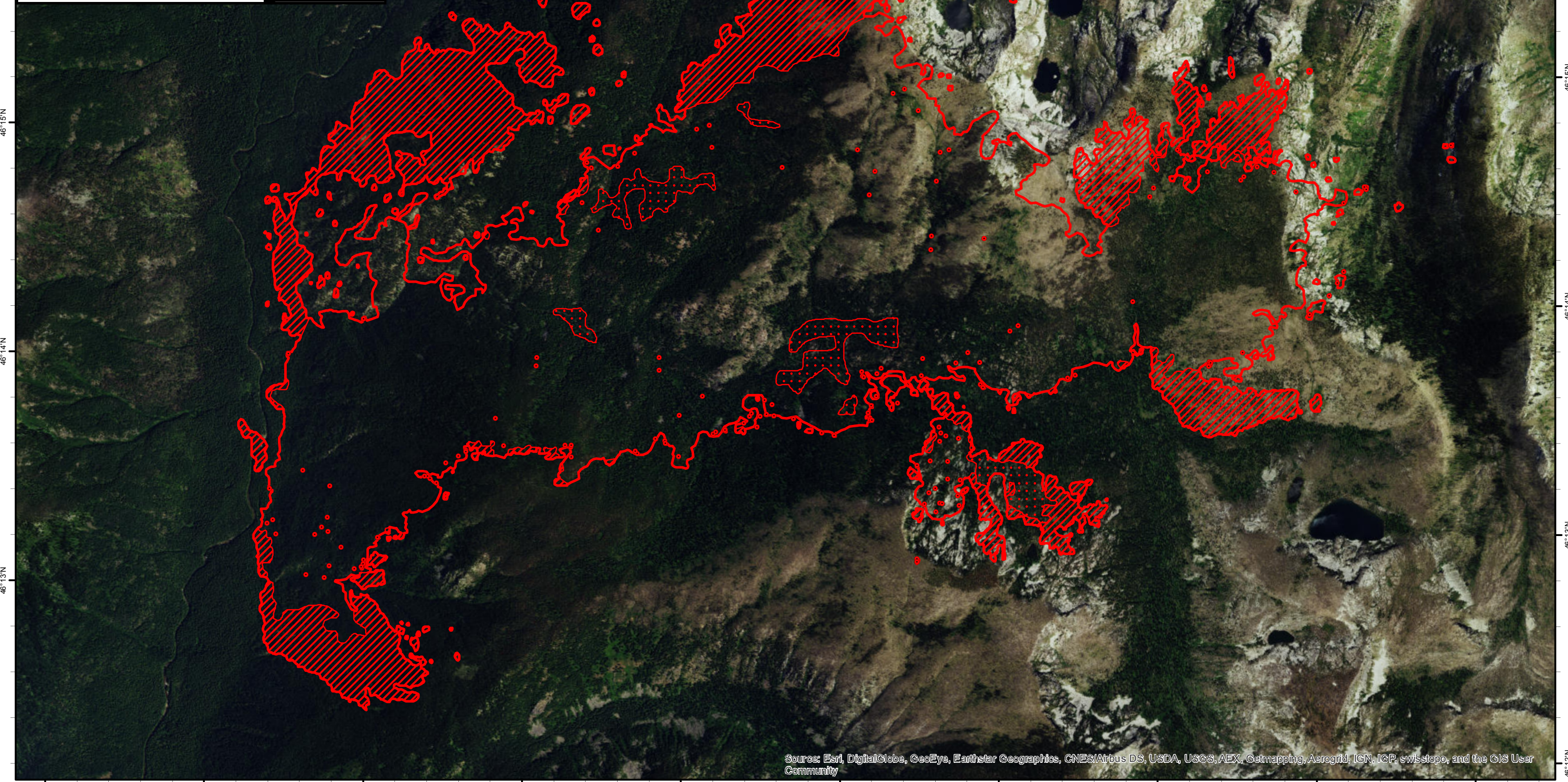
114°44'W 114°43'W 114°42'W 114°41'W 114°40'W 114°39'W 114°38'W 114°37'W 114°36'W 114°35'W

Moose Fire Infrared Map
 ID-NCF-000369
 Map Date: 08/28/2016
 Imagery Date: 08/27/2016
 Imagery Time: 2228 MDT
 IR Interpreted Acres: 5,703
 IRIN: Tammy Hocut

- Isolated Heat Sources
- Heat Perimeter
- Intense Heat
- Scattered Heat

NAD 1983 UTM Zone 11N

0 0.125 0.25 0.5 0.75 1 Miles

114°44'W 114°43'W 114°42'W 114°41'W 114°40'W 114°39'W 114°38'W 114°37'W 114°36'W 114°35'W

46°16'N
46°15'N
46°14'N
46°13'N
46°12'N

46°16'N
46°15'N
46°14'N
46°13'N
46°12'N

Source: Esri, DigitalGlobe, GeoEye, Earthstar Geographics, CNES/Airbus DS, USDA, USGS, AEX, Getmapping, Aerogrid, IGN, IGP, swisstopo, and the GIS User Community