


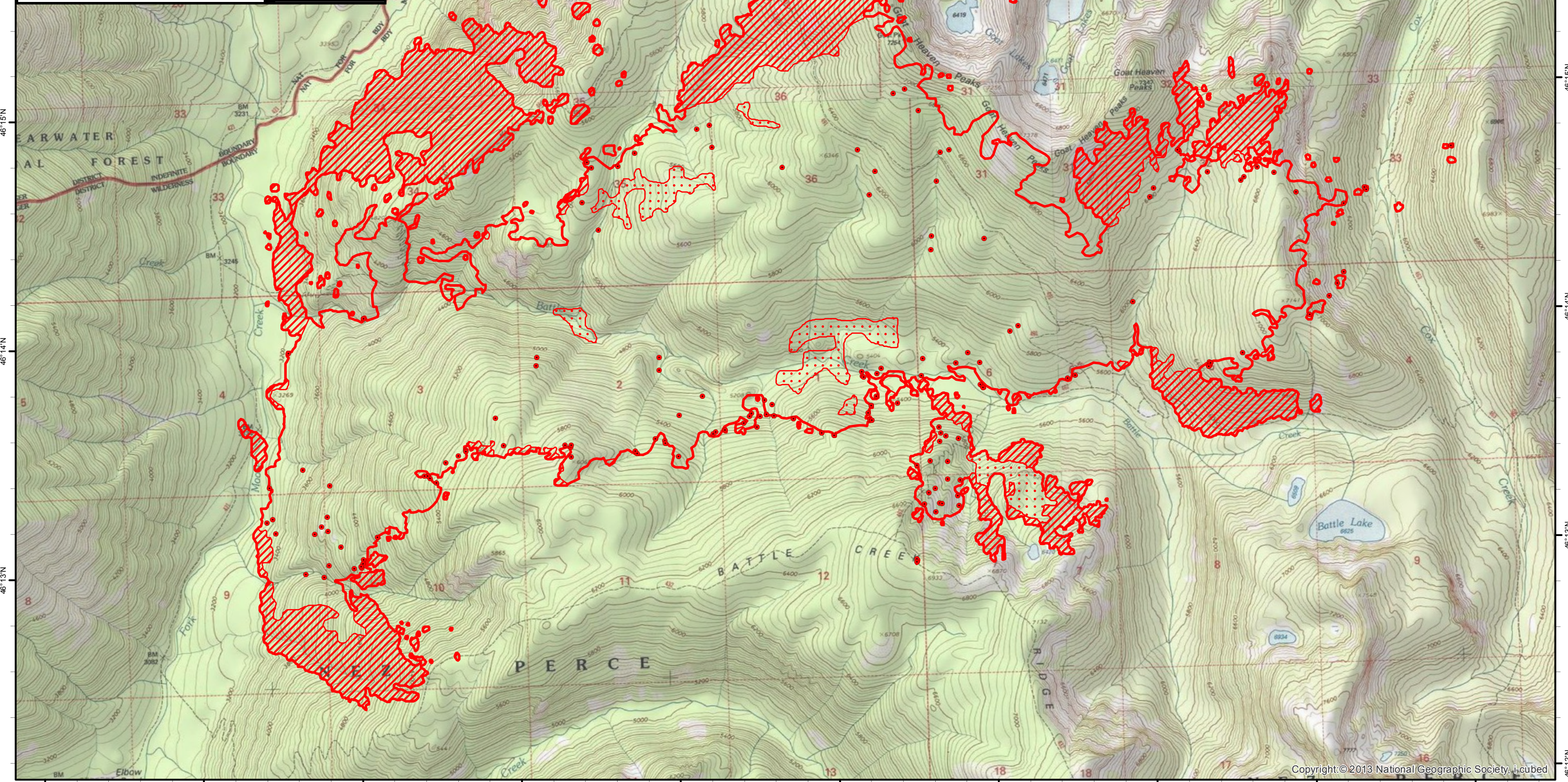
114°44'W 114°43'W 114°42'W 114°41'W 114°40'W 114°39'W 114°38'W 114°37'W 114°36'W 114°35'W

**Moose Fire Infrared Map**  
**ID-NCF-000369**  
**Map Date: 08/28/2016**  
**Imagery Date: 08/27/2016**  
**Imagery Time: 2228 MDT**  
**IR Interpreted Acres: 5,703**  
**IRIN: Tammy Hocut**

- Isolated Heat Sources
- Heat Perimeter
- Intense Heat
- Scattered Heat

NAD 1983 UTM Zone 11N

0 0.125 0.25 0.5 0.75 1 Miles

114°44'W 114°43'W 114°42'W 114°41'W 114°40'W 114°39'W 114°38'W 114°37'W 114°36'W 114°35'W

46°16'N  
46°15'N  
46°14'N  
46°13'N  
46°12'N

46°16'N  
46°15'N  
46°14'N  
46°13'N  
46°12'N