

Observation Fire

MT-BRF-16024

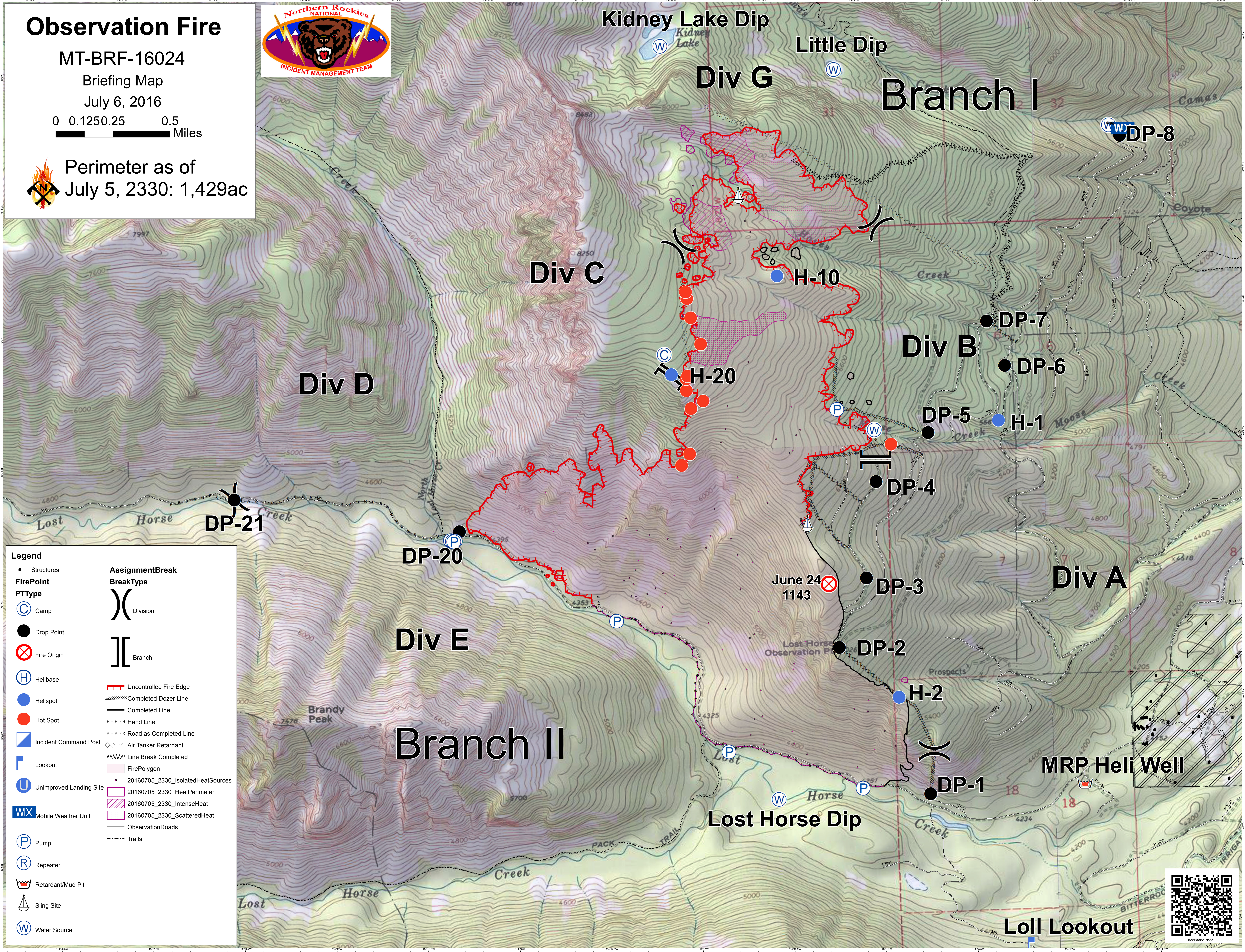
Briefing Map

July 6, 2016

0 0.1250.25 0.5 Miles



Perimeter as of July 5, 2330: 1,429ac



Legend

• Structures	AssignmentBreak
FirePoint	BreakType
PTType	() Division
(C) Camp	[] Branch
● Drop Point	— Uncontrolled Fire Edge
⊗ Fire Origin	⊗ Completed Dozer Line
(H) Helibase	— Completed Line
(B) Helispot	- - - Hand Line
● Hot Spot	R - R - R Road as Completed Line
(ICP) Incident Command Post	◇◇◇ Air Tanker Retardant
(L) Lookout	WWW Line Break Completed
(ULS) Unimproved Landing Site	■ FirePolygon
(WX) Mobile Weather Unit	• 20160705_2330_IsolatedHeatSources
(P) Pump	□ 20160705_2330_HeatPerimeter
(R) Repeater	■ 20160705_2330_IntenseHeat
(RM) Retardant/Mud Pit	■ 20160705_2330_ScatteredHeat
(S) Sling Site	— ObservationRoads
(W) Water Source	⋯ Trails

