

Observation Fire

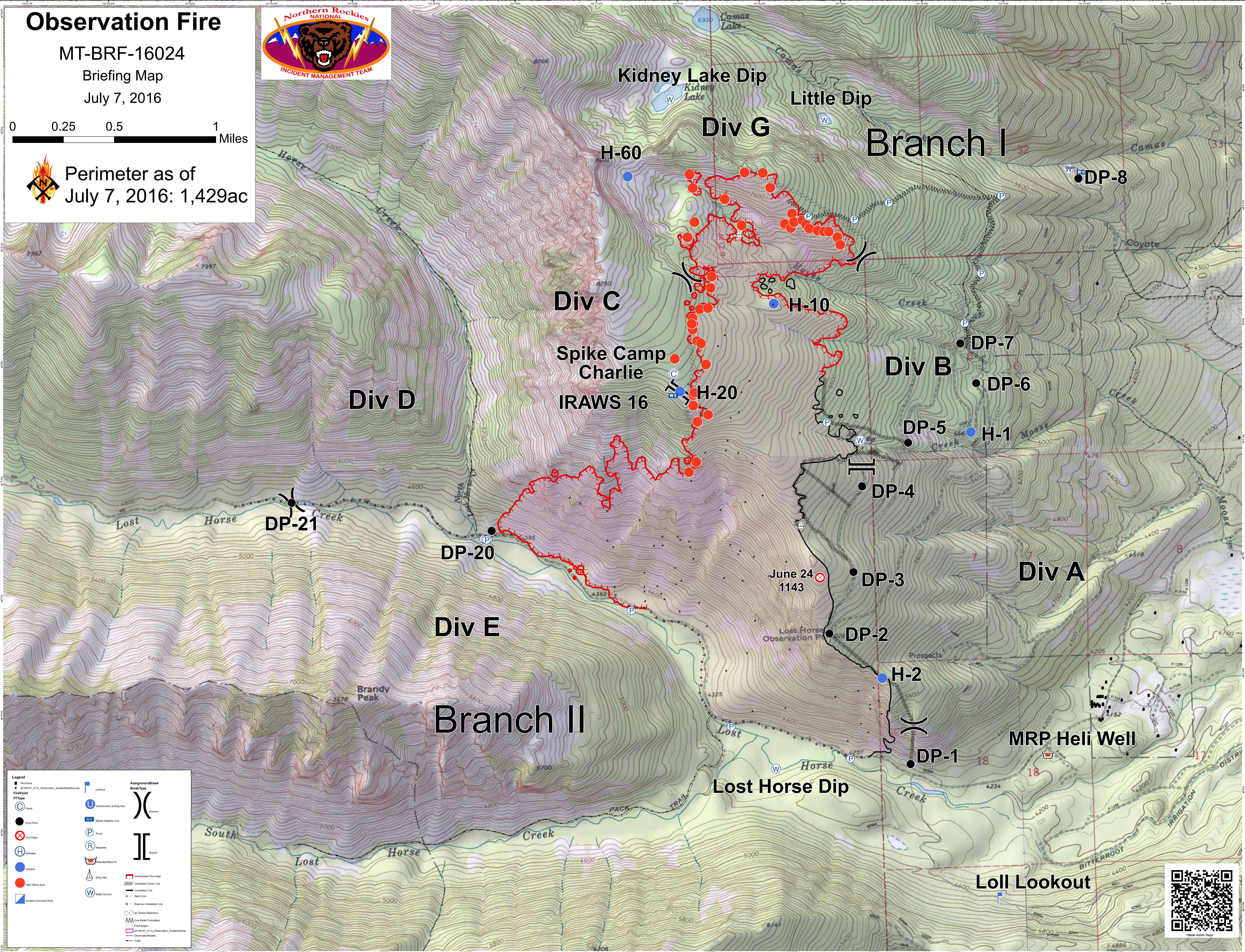
MT-BRF-16024

Briefing Map

July 7, 2016



Perimeter as of July 7, 2016: 1,429ac



Legend	Assignment/Break
● Structure	⌋ Canyon
● 20160707_0114_Observation_ScatterSheet	⌋ Branch
● Fire Point	⌋ Uncontrolled Fire Edge
● Fire Origin	⌋ Completed Outer Line
● Helibase	⌋ Completed Line
● Heliport	⌋ Hand Line
● Pallet Drop Spot	⌋ Road as Completed Line
● Incident Command Post	⌋ Air Tanker Release
⌋ Lookout	⌋ Line Break Completed
⌋ Unimproved Landing Site	⌋ Trail
⌋ Mobile Weather Unit	⌋ Observation/Road
⌋ Pump	⌋ Trail
⌋ Responder	⌋ Observation/Road
⌋ Responder Mud Pit	⌋ Trail
⌋ Sking Site	⌋ Trail
⌋ Water Source	⌋ Trail

