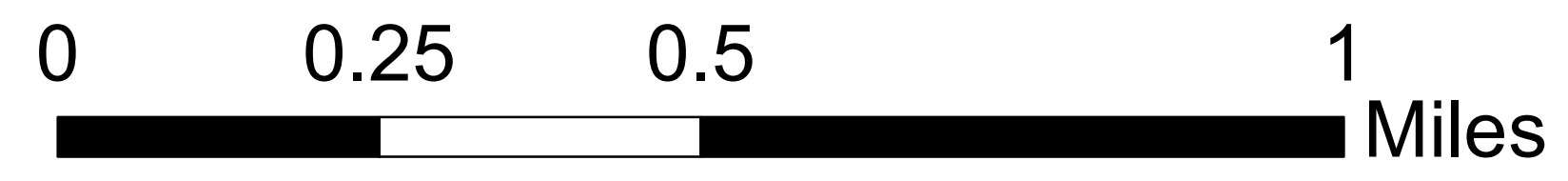


Observation Fire

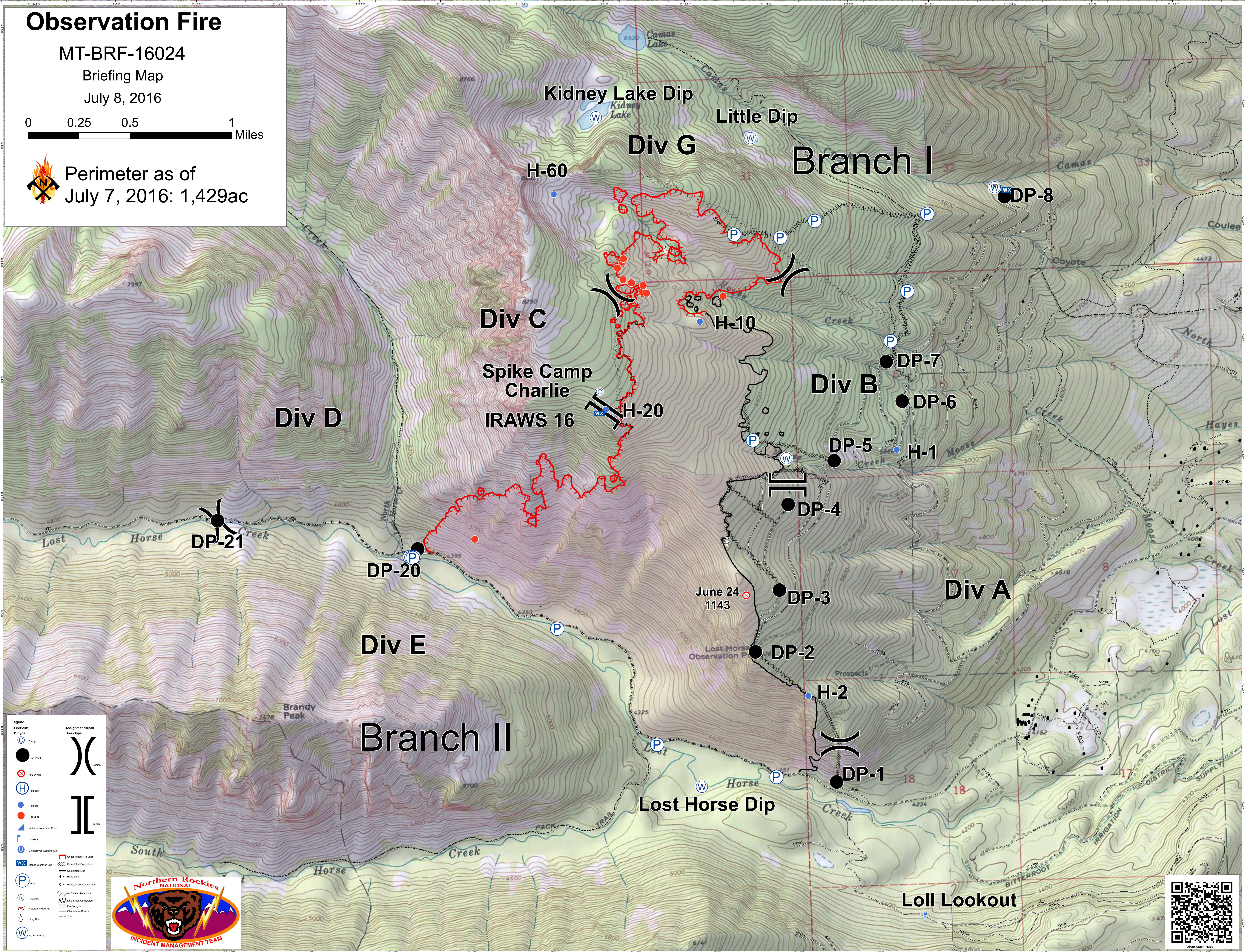
MT-BRF-16024

Briefing Map

July 8, 2016



Perimeter as of July 7, 2016: 1,429ac



Legend	Assignment/Break
● Camp Point	() Division
⊗ Fire Origin	([] Branch
⊙ Helipad	
● Hot Spot	
⊠ Incident Command Post	
⊞ Lookout	
⊞ Unimproved Landing Site	
⊞ Mobile Weather Unit	— Uncontrolled Fire Edge
⊞ Camp	— Completed Ditch Line
⊞ Road as Completed Line	— H - Hand Line
⊞ Repairer	⊞ Air Tanker Retardant
⊞ Retardant/Hot Pt	⊞ Line Break Completed
⊞ Slag Site	⊞ Fire/Triggers
⊞ Water Source	⊞ Observation/Hotspot
	⊞ Trail

