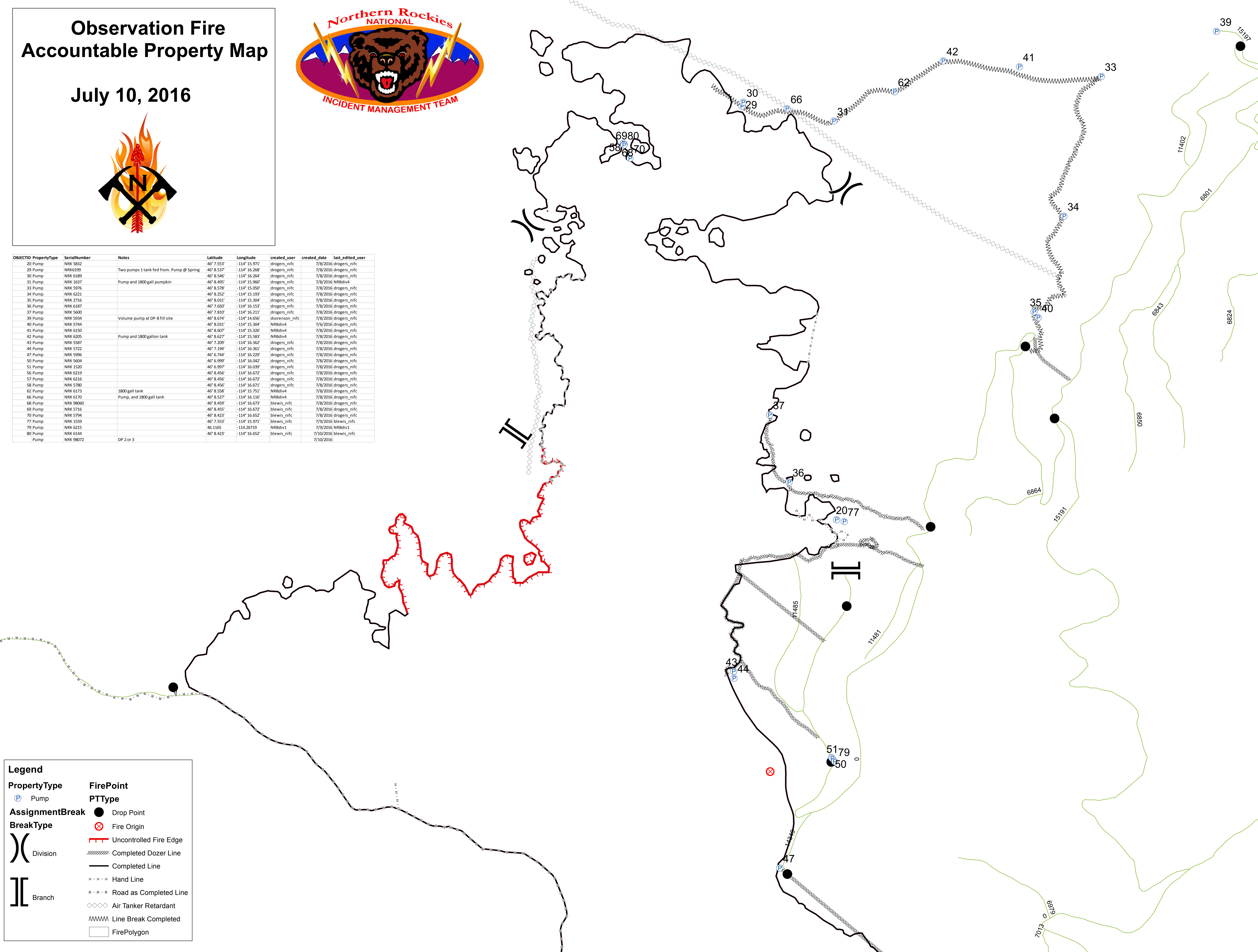


Observation Fire Accountable Property Map

July 10, 2016



OBJECTID	PropertyType	SerialNumber	Notes	Latitude	Longitude	created_user	created_date	last_edited_user
20	Pump	NRK 5832		46° 7.553'	-114° 15.971'	drogers_nifc	7/8/2016	drogers_nifc
29	Pump	NRK6199	Two pumps 1 tank fed from Pump @ Spring	46° 8.537'	-114° 16.268'	drogers_nifc	7/8/2016	drogers_nifc
30	Pump	NRK 6189		46° 8.546'	-114° 16.264'	drogers_nifc	7/8/2016	drogers_nifc
31	Pump	NRK 6187	Pump and 1800 gall pumpkin	46° 8.495'	-114° 15.900'	drogers_nifc	7/8/2016	NRBdiv4
33	Pump	NRK 5976		46° 8.578'	-114° 15.050'	drogers_nifc	7/8/2016	drogers_nifc
34	Pump	NRK 6221		46° 8.252'	-114° 15.193'	drogers_nifc	7/8/2016	drogers_nifc
35	Pump	NRK 2716		46° 8.031'	-114° 15.304'	drogers_nifc	7/8/2016	drogers_nifc
36	Pump	NRK 6187		46° 7.650'	-114° 16.153'	drogers_nifc	7/8/2016	drogers_nifc
37	Pump	NRK 5600		46° 7.810'	-114° 16.211'	drogers_nifc	7/8/2016	drogers_nifc
39	Pump	NRK 5934	Volume pump at DP-8 fill site	46° 8.074'	-114° 14.656'	disorenson_nifc	7/8/2016	drogers_nifc
40	Pump	NRK 5744		46° 8.031'	-114° 15.304'	NRBdiv4	7/6/2016	drogers_nifc
41	Pump	NRK 6150		46° 8.607'	-114° 15.326'	NRBdiv4	7/8/2016	drogers_nifc
42	Pump	NRK 6205	Pump and 1800 gallon tank	46° 8.627'	-114° 15.583'	NRBdiv4	7/8/2016	drogers_nifc
43	Pump	NRK 5587		46° 7.209'	-114° 16.362'	drogers_nifc	7/8/2016	drogers_nifc
44	Pump	NRK 5722		46° 7.194'	-114° 16.361'	drogers_nifc	7/8/2016	drogers_nifc
47	Pump	NRK 5996		46° 6.744'	-114° 16.229'	drogers_nifc	7/8/2016	drogers_nifc
50	Pump	NRK 5604		46° 6.999'	-114° 16.042'	drogers_nifc	7/8/2016	drogers_nifc
51	Pump	NRK 1520		46° 6.997'	-114° 16.039'	drogers_nifc	7/8/2016	drogers_nifc
56	Pump	NRK 6219		46° 8.456'	-114° 16.672'	drogers_nifc	7/8/2016	drogers_nifc
57	Pump	NRK 6216		46° 8.456'	-114° 16.672'	drogers_nifc	7/8/2016	drogers_nifc
58	Pump	NRK 5780		46° 8.456'	-114° 16.671'	drogers_nifc	7/8/2016	drogers_nifc
62	Pump	NRK 6173	1800 gall tank	46° 8.536'	-114° 15.751'	NRBdiv4	7/8/2016	drogers_nifc
66	Pump	NRK 6170	Pump, and 1800 gall tank	46° 8.527'	-114° 16.116'	NRBdiv4	7/8/2016	drogers_nifc
68	Pump	NRK 98060		46° 8.459'	-114° 16.673'	blewis_nifc	7/8/2016	drogers_nifc
69	Pump	NRK 5716		46° 8.455'	-114° 16.672'	blewis_nifc	7/8/2016	drogers_nifc
70	Pump	NRK 5794		46° 8.423'	-114° 16.652'	blewis_nifc	7/8/2016	drogers_nifc
77	Pump	NRK 1559		46° 7.553'	-114° 15.971'	blewis_nifc	7/9/2016	blewis_nifc
79	Pump	NRK 6215		46.1165	-114.26719	NRBdiv1	7/9/2016	NRBdiv1
80	Pump	NRK 6144		46° 8.423'	-114° 16.652'	blewis_nifc	7/10/2016	blewis_nifc
	Pump	NRK 98072	DP 2 or 3				7/10/2016	



Legend

PropertyType
 Pump

AssignmentBreak
 Drop Point

BreakType
 Fire Origin
 Uncontrolled Fire Edge
 Completed Dozer Line
 Completed Line
 Hand Line
 Road as Completed Line
 Air Tanker Retardant
 Line Break Completed
 FirePolygon