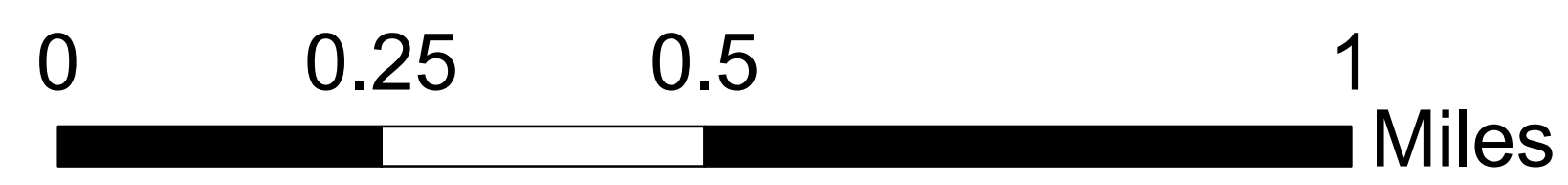


# Observation Fire

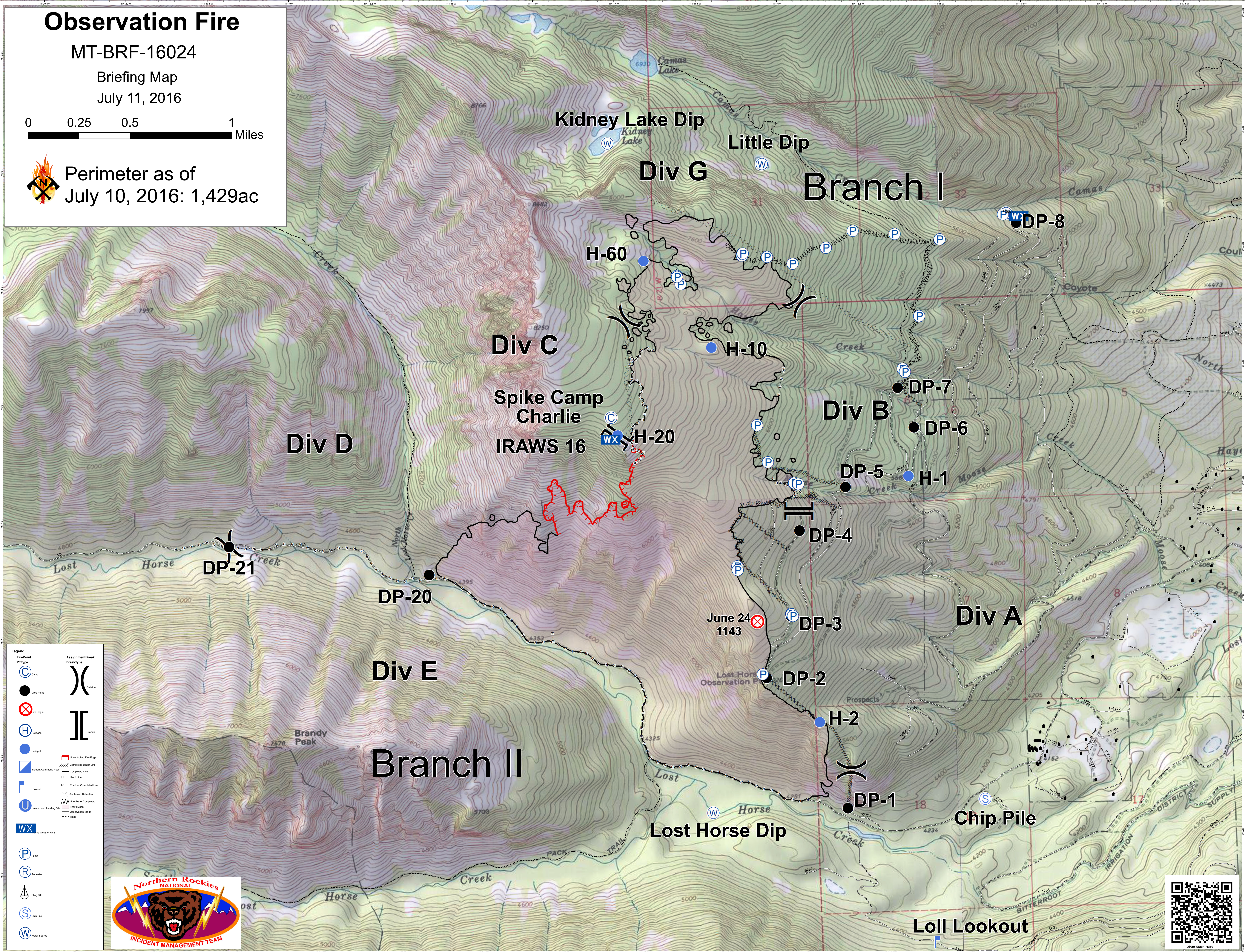
MT-BRF-16024

Briefing Map

July 11, 2016



Perimeter as of  
July 10, 2016: 1,429ac



**Legend**

|  |                                |  |                               |
|--|--------------------------------|--|-------------------------------|
|  | <b>Fire Point</b>              |  | <b>Assignment Break</b>       |
|  | <b>PTType</b>                  |  | <b>Break Type</b>             |
|  | <b>Camp</b>                    |  | <b>Uncontrolled Fire Edge</b> |
|  | <b>Drop Point</b>              |  | <b>Completed Doser Line</b>   |
|  | <b>Fire Origin</b>             |  | <b>Hand Line</b>              |
|  | <b>Helibase</b>                |  | <b>Road as Completed Line</b> |
|  | <b>Helistop</b>                |  | <b>Air Tanker Release</b>     |
|  | <b>Hosted Command Post</b>     |  | <b>Line Break Completed</b>   |
|  | <b>Lookout</b>                 |  | <b>Fire Polygon</b>           |
|  | <b>Unimproved Landing Site</b> |  | <b>Observation Point</b>      |
|  | <b>WX</b> Weather Unit         |  | <b>Trail</b>                  |
|  | <b>Pump</b>                    |  |                               |
|  | <b>Repeater</b>                |  |                               |
|  | <b>Strip Site</b>              |  |                               |
|  | <b>Chip Pile</b>               |  |                               |
|  | <b>Water Source</b>            |  |                               |

