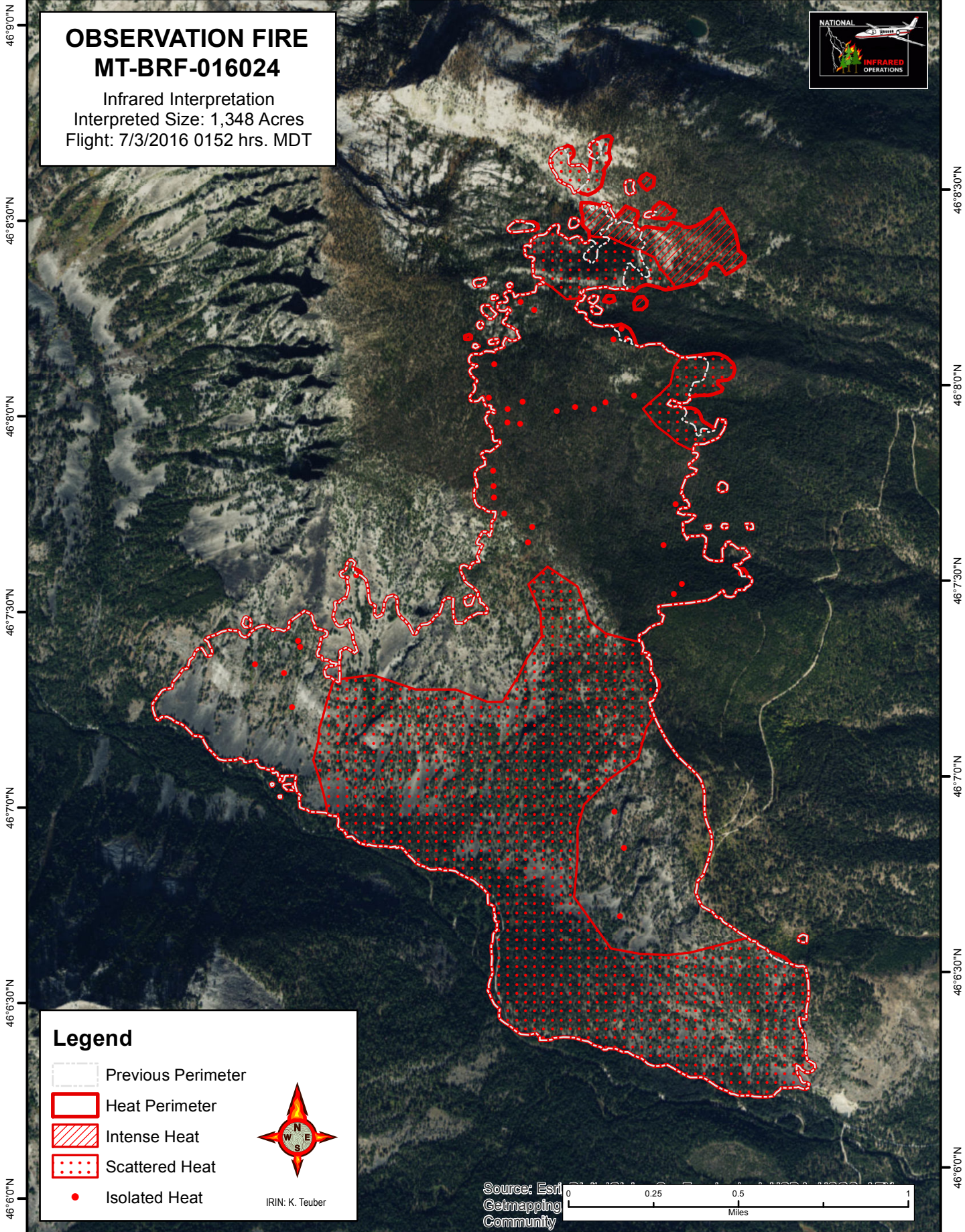







114°18'30"W 114°18'0"W 114°17'30"W 114°17'0"W 114°16'30"W 114°16'0"W 114°15'30"W

OBSERVATION FIRE MT-BRF-016024

Infrared Interpretation
Interpreted Size: 1,348 Acres
Flight: 7/3/2016 0152 hrs. MDT



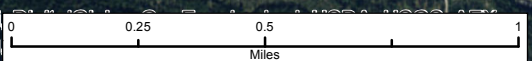
Legend

-  Previous Perimeter
-  Heat Perimeter
-  Intense Heat
-  Scattered Heat
-  Isolated Heat



IRIN: K. Teuber

Source: Esri
Getmapping
Community



114°18'30"W 114°18'0"W 114°17'30"W 114°17'0"W 114°16'30"W 114°16'0"W 114°15'30"W

46°5'0"N
46°8'30"N
46°8'0"N
46°7'30"N
46°7'0"N
46°6'30"N
46°6'0"N

46°9'0"N
46°8'30"N
46°8'0"N
46°7'30"N
46°7'0"N
46°6'30"N
46°6'0"N