

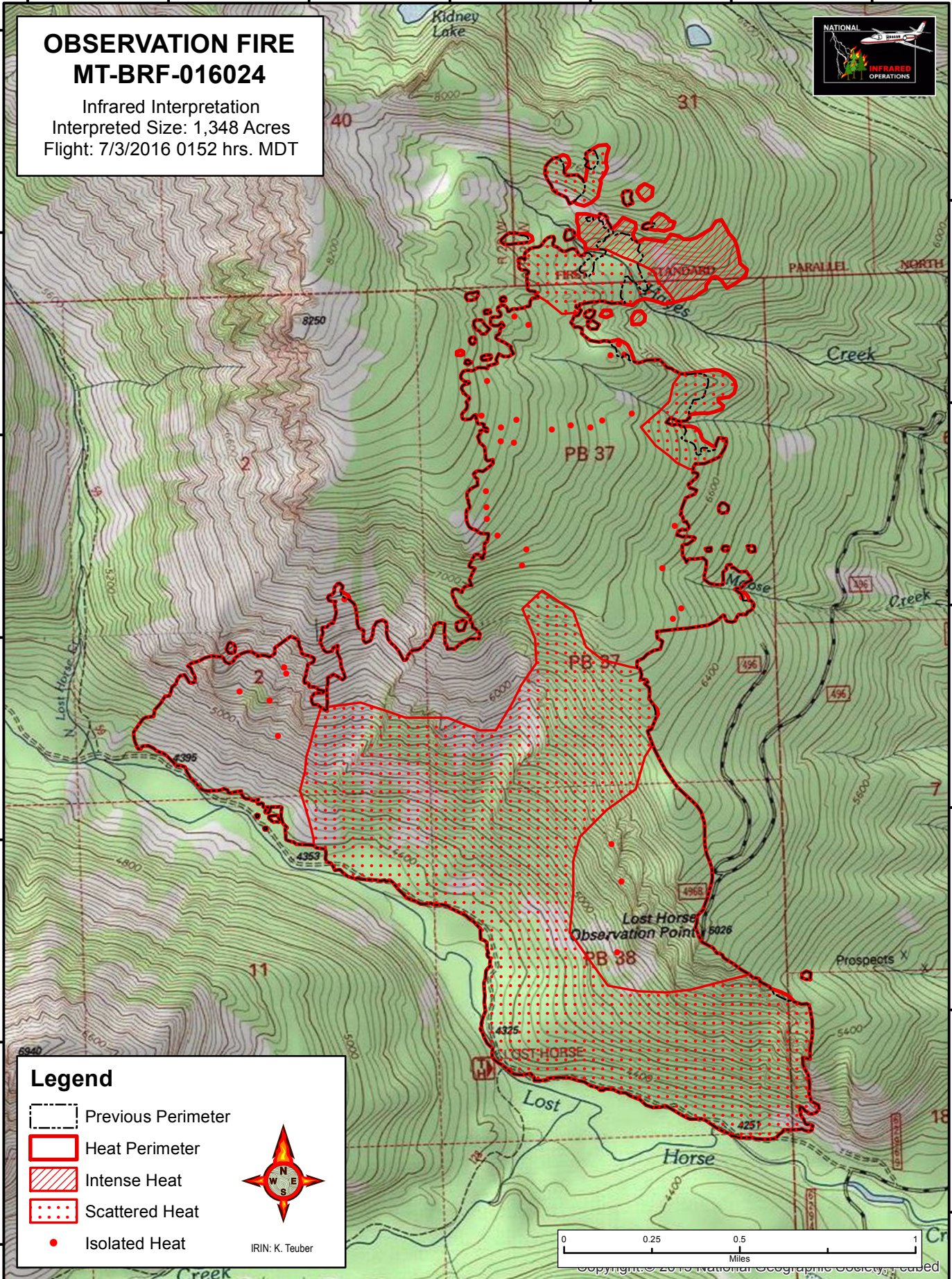
114°18'30"W 114°18'0"W 114°17'30"W 114°17'0"W 114°16'30"W 114°16'0"W 114°15'30"W

46°51'0"N
46°48'30"N
46°46'0"N
46°43'30"N
46°41'0"N
46°38'30"N
46°36'0"N
46°33'30"N
46°31'0"N
46°28'30"N
46°26'0"N
46°23'30"N
46°21'0"N
46°18'30"N
46°16'0"N
46°13'30"N
46°11'0"N
46°8'30"N
46°6'0"N

46°51'0"N
46°48'30"N
46°46'0"N
46°43'30"N
46°41'0"N
46°38'30"N
46°36'0"N
46°33'30"N
46°31'0"N
46°28'30"N
46°26'0"N
46°23'30"N
46°21'0"N
46°18'30"N
46°16'0"N
46°13'30"N
46°11'0"N
46°8'30"N
46°6'0"N

OBSERVATION FIRE MT-BRF-016024

Infrared Interpretation
Interpreted Size: 1,348 Acres
Flight: 7/3/2016 0152 hrs. MDT

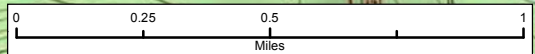


Legend

- Previous Perimeter
- Heat Perimeter
- Intense Heat
- Scattered Heat
- Isolated Heat



IRIN: K. Teuber



114°18'30"W 114°18'0"W 114°17'30"W 114°17'0"W 114°16'30"W 114°16'0"W 114°15'30"W

Copyright © 2016 National Geographic Society. All rights reserved.