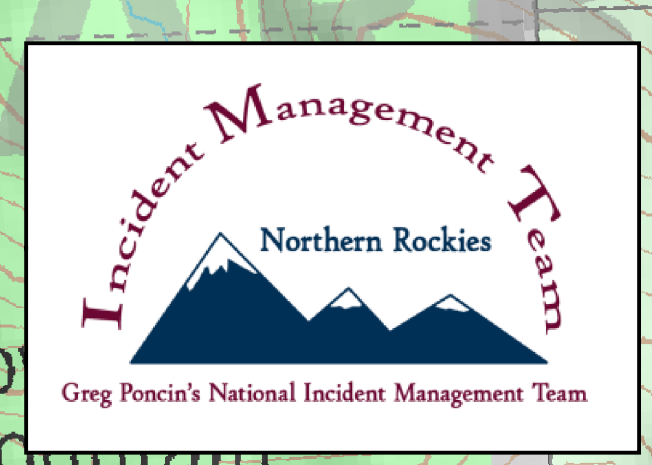


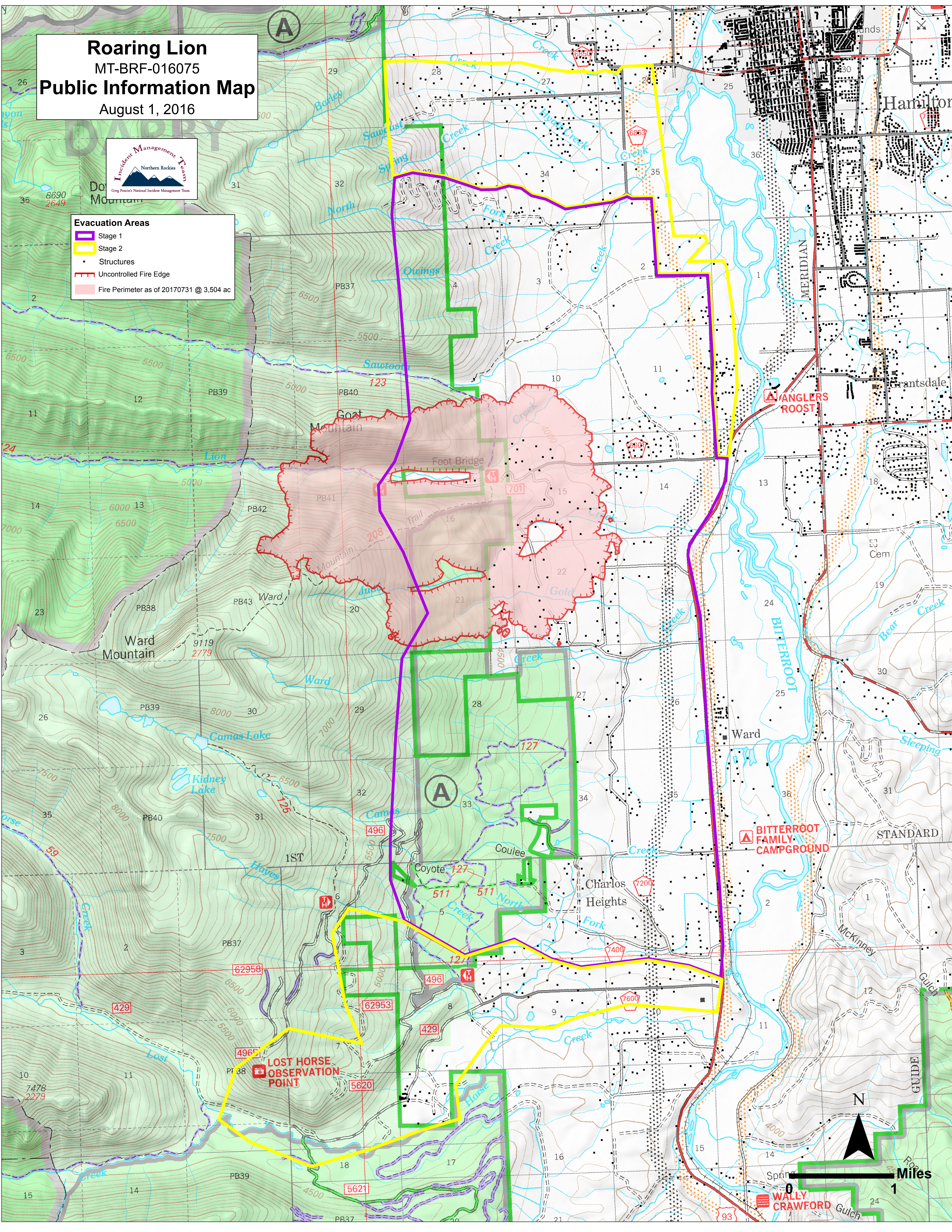
Roaring Lion

MT-BRF-016075
Public Information Map
August 1, 2016



Evacuation Areas

- Stage 1
- Stage 2
- Structures
- Uncontrolled Fire Edge
- Fire Perimeter as of 20170731 @ 3,504 ac



BITTERROOT FAMILY CAMPGROUND

ANGLERS ROOST

LOST HORSE OBSERVATION POINT



Miles

WALLY CRAWFORD

GUIDE

Hamilton

Grantsdale

STANDARD

McKinney

Spring

Roan

A

A

93

PB37

PB40

PB39

PB42

PB41

PB43

PB38

PB39

PB40

PB37

PB38

PB39

PB37

PB37

PB37

PB37

PB37

PB37

PB37

PB37

PB37

PB37

PB37

PB37

PB37

PB37

PB37

PB37

PB37

PB37

PB37

PB37

PB37

PB37

PB37

PB37

PB37

PB37

PB37

PB37

PB37

PB37

PB37

PB37

PB37