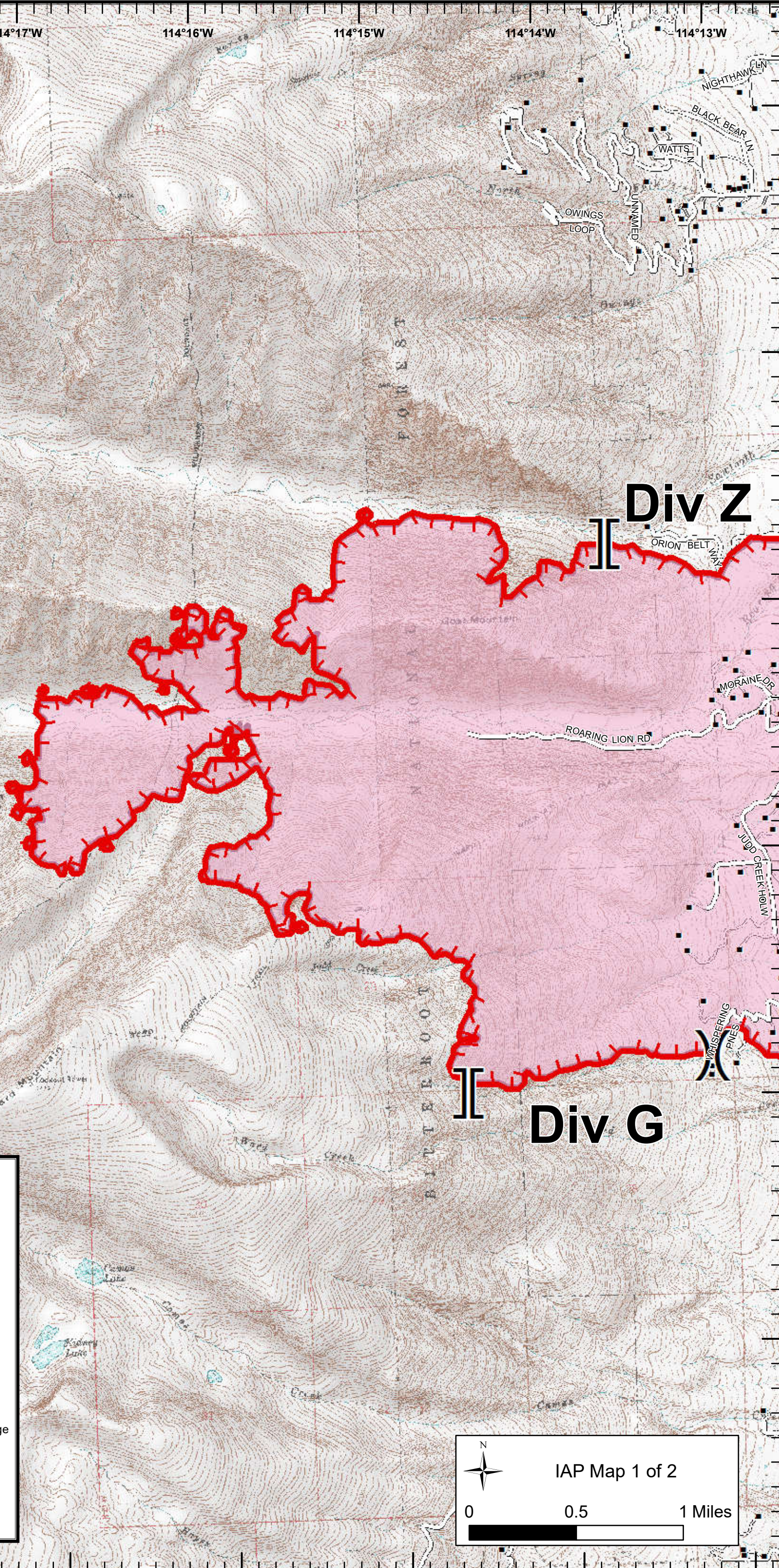


114°18'W 114°17'W 114°16'W 114°15'W 114°14'W 114°13'W

**Roaring Lion IAP Map**  
MT-BRF-016075  
August 2, 2016  
4,392 acres as of 20160801, 1905



46°14'N  
46°13'N  
46°12'N  
46°11'N  
46°10'N  
46°9'N



**Legend**

- Structures

**Assignment Break**

- ) ( Division
- || Branch
- ┌┐ Uncontrolled Fire Edge
- ▬ Perimeter Sector
- Fire Polygon
- Roads

N

IAP Map 1 of 2

0 0.5 1 Miles