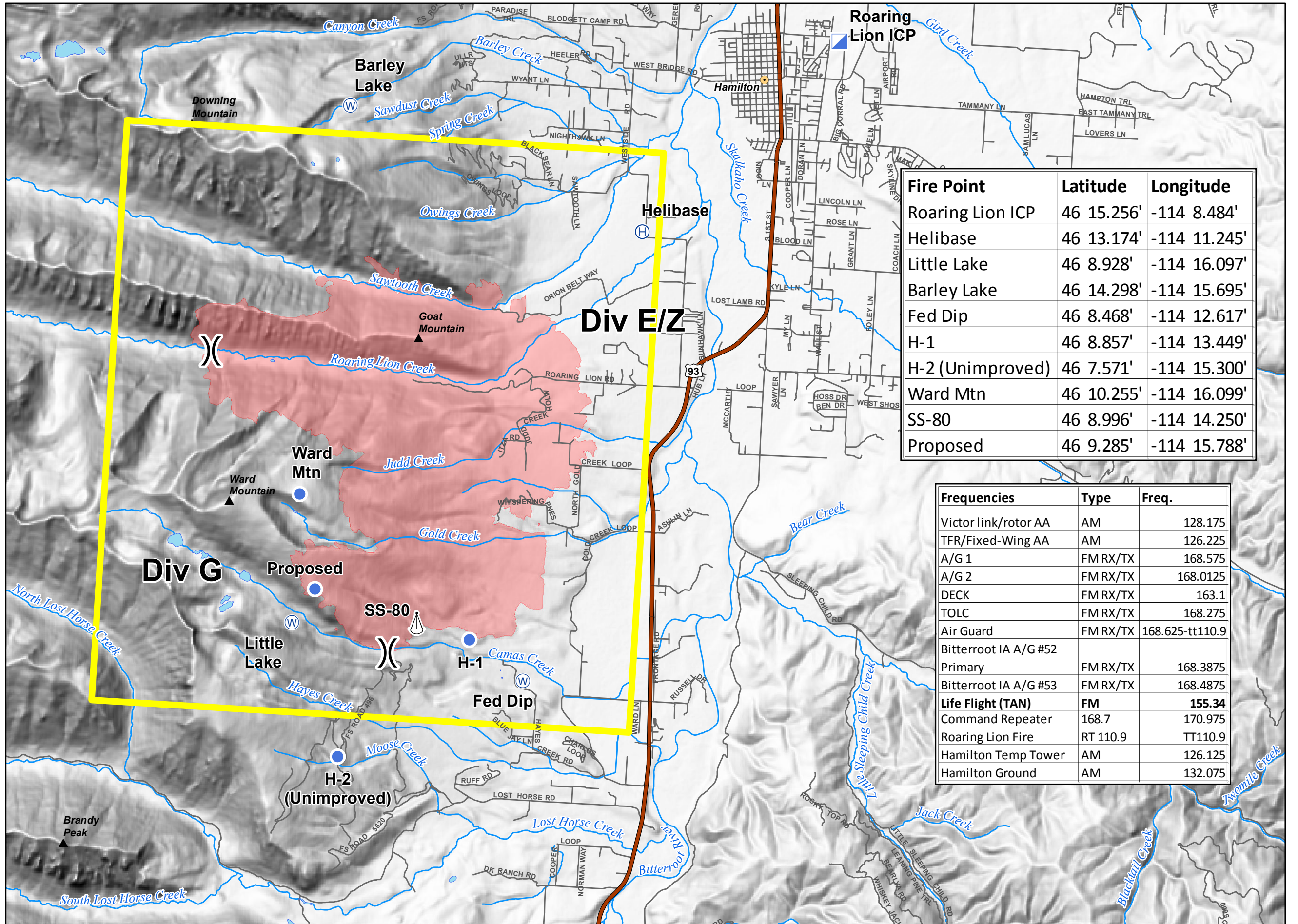
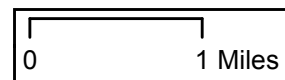


Roaring Lion
 MT-BRF-016075
Pilot Map
 August 10, 2016



- Helibase
- Helispot
- ICP
- Sling Site
- Water Source
- Division
- Fire Perimeter
- TFR
- Roads



| Fire Point | Latitude | Longitude |
|------------------|------------|--------------|
| Roaring Lion ICP | 46 15.256' | -114 8.484' |
| Helibase | 46 13.174' | -114 11.245' |
| Little Lake | 46 8.928' | -114 16.097' |
| Barley Lake | 46 14.298' | -114 15.695' |
| Fed Dip | 46 8.468' | -114 12.617' |
| H-1 | 46 8.857' | -114 13.449' |
| H-2 (Unimproved) | 46 7.571' | -114 15.300' |
| Ward Mtn | 46 10.255' | -114 16.099' |
| SS-80 | 46 8.996' | -114 14.250' |
| Proposed | 46 9.285' | -114 15.788' |

| Frequencies | Type | Freq. |
|--------------------------|-----------|-----------------|
| Victor link/rotor AA | AM | 128.175 |
| TFR/Fixed-Wing AA | AM | 126.225 |
| A/G 1 | FM RX/TX | 168.575 |
| A/G 2 | FM RX/TX | 168.0125 |
| DECK | FM RX/TX | 163.1 |
| TOLC | FM RX/TX | 168.275 |
| Air Guard | FM RX/TX | 168.625-tt110.9 |
| Bitterroot IA A/G #52 | | |
| Primary | FM RX/TX | 168.3875 |
| Bitterroot IA A/G #53 | FM RX/TX | 168.4875 |
| Life Flight (TAN) | FM | 155.34 |
| Command Repeater | | 168.7 170.975 |
| Roaring Lion Fire | RT 110.9 | TT110.9 |
| Hamilton Temp Tower | AM | 126.125 |
| Hamilton Ground | AM | 132.075 |