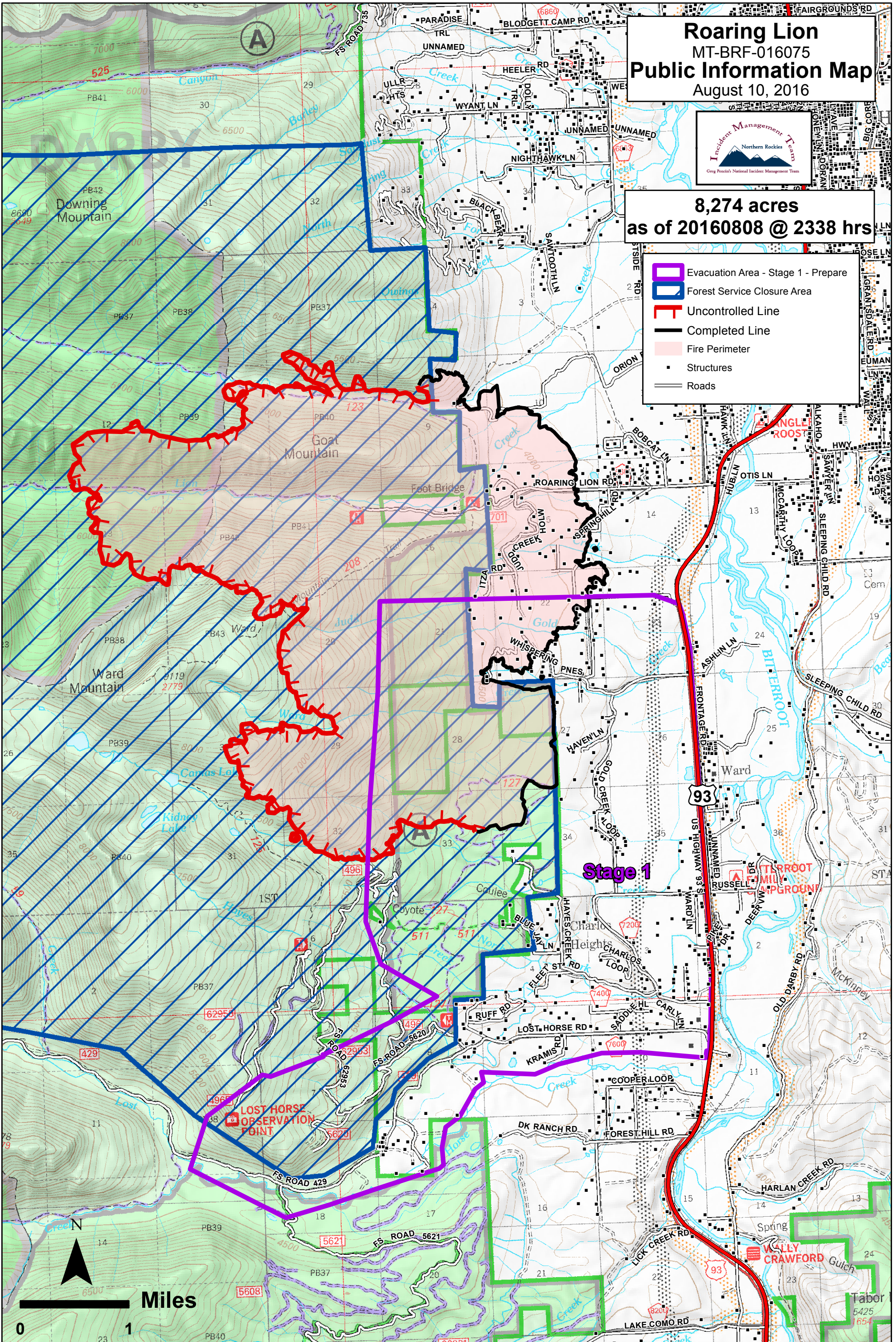


# Roaring Lion MT-BRF-016075 Public Information Map August 10, 2016



**8,274 acres  
as of 20160808 @ 2338 hrs**

- Evacuation Area - Stage 1 - Prepare
- Forest Service Closure Area
- Uncontrolled Line
- Completed Line
- Fire Perimeter
- Structures
- Roads



**Stage 1**

**LOST HORSE  
OBSERVATION  
POINT**

**WALLY  
CRAWFORD**

**Tabor**