



**Legend**

- Aerial Hazards
- Fire Start
- Backcountry Cabins
- Trails
- Primary Roads
- Secondary Roads
- Overhead, Active
- Area Closure
- Fire Polygon
- Aircraft Avoidance Zones
- Park Boundary

**Fire Perimeters: 1988-2015**

- 1988
- 1990 - 1998
- 2000 - 2009
- 2010 - 2015

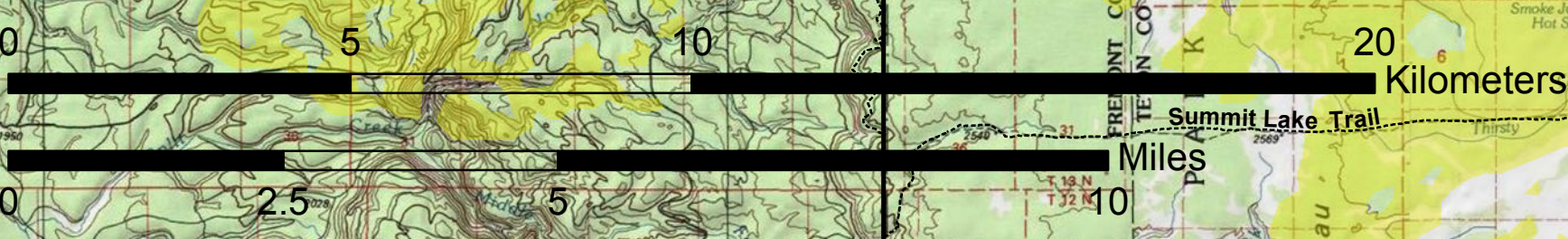
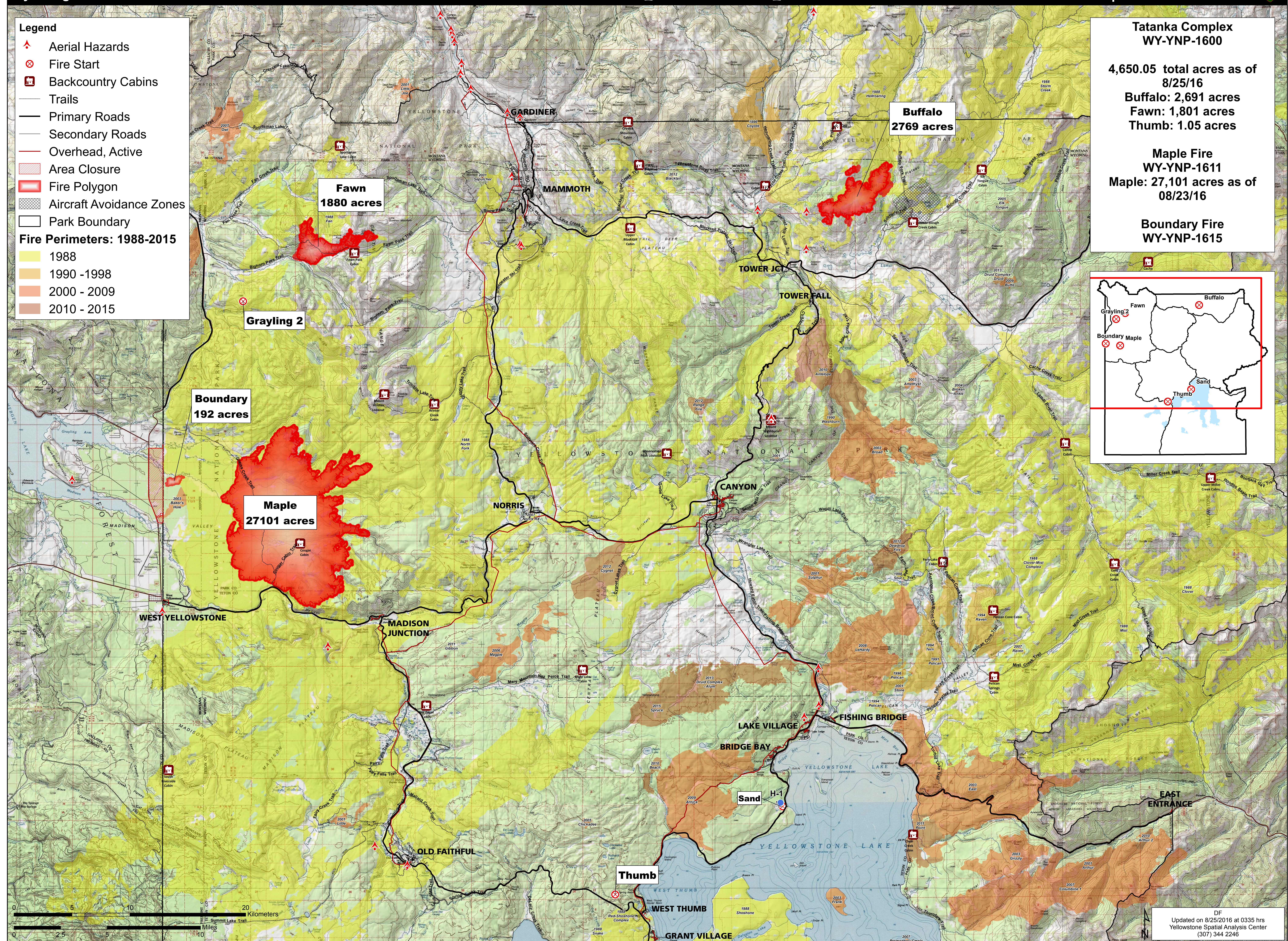
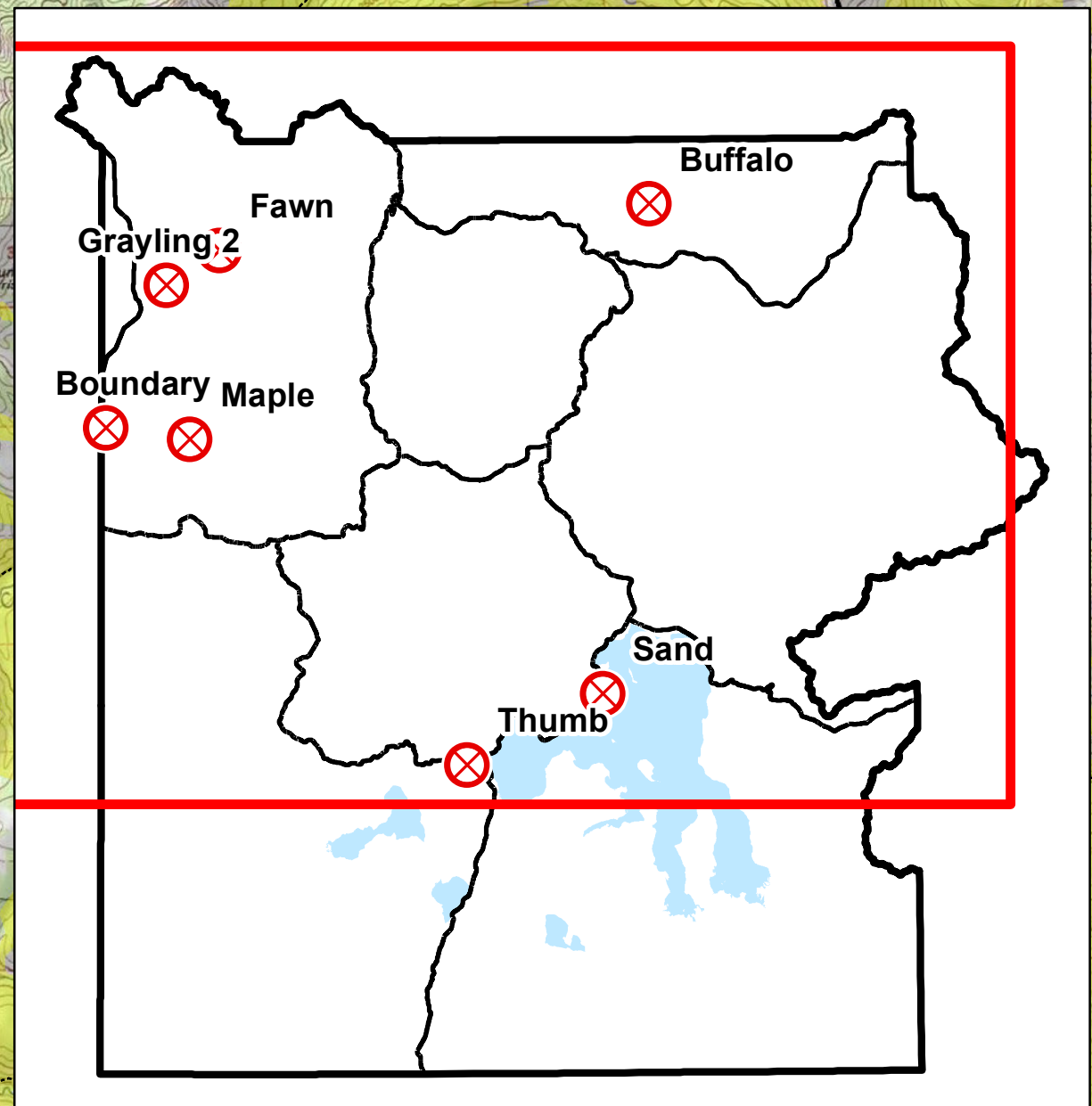
**Tatanka Complex  
WY-YNP-1600**

4,650.05 total acres as of  
8/25/16

Buffalo: 2,691 acres  
Fawn: 1,801 acres  
Thumb: 1.05 acres

**Maple Fire  
WY-YNP-1611**  
Maple: 27,101 acres as of  
08/23/16

**Boundary Fire  
WY-YNP-1615**



DF  
Updated on 8/25/2016 at 0335 hrs  
Yellowstone Spatial Analysis Center  
(307) 344 2246

Path: K:\Fire\_2016Season\Individual\_Fires\2016\_Tatanka\_Complex\projects\airops\_ansi\_e\_topo\_2016\_Tatanka\_Complex\_WYYNP1600.mxd