



- Backcountry Cabins
- Trails
- Primary Roads
- Secondary Roads
- Fire Origin
- Area Closure
- Fire Polygon
- Aircraft Avoidance Zones
- Park Boundary

Fire Perimeters: 1988-2015

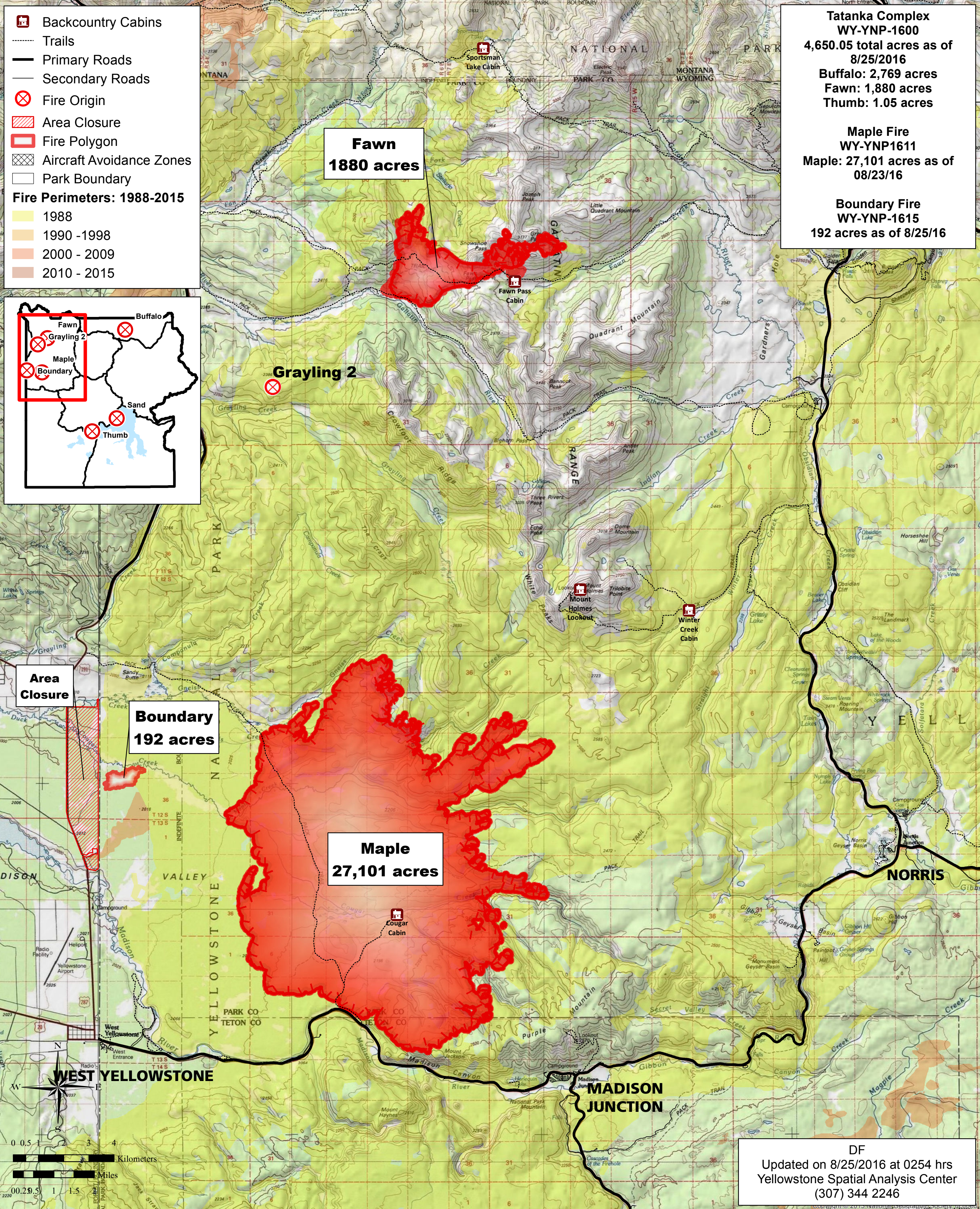
- 1988
- 1990 - 1998
- 2000 - 2009
- 2010 - 2015

Inset map showing the location of the Tatanka Complex Northwest area within the larger Yellowstone National Park boundary. The area is outlined in red and includes labels for Fawn, Grayling 2, Maple, Boundary, Sand, and Thumb.

**Tatanka Complex
WY-YNP-1600**
4,650.05 total acres as of
8/25/2016
Buffalo: 2,769 acres
Fawn: 1,880 acres
Thumb: 1.05 acres

**Maple Fire
WY-YNP1611**
Maple: 27,101 acres as of
08/23/16

**Boundary Fire
WY-YNP-1615**
192 acres as of 8/25/16



DF
Updated on 8/25/2016 at 0254 hrs
Yellowstone Spatial Analysis Center
(307) 344 2246