

**Legend**

- Aerial Hazards
- Backcountry Cabins
- Trails
- Primary Roads
- Secondary Roads
- Overhead, Active

**Boundary Fire**

- Area Closure
- Fire Polygon
- Park Boundary

**Fire Perimeters: 1988-2015**

- 1988
- 1990 - 1998
- 2000 - 2009
- 2010 - 2015

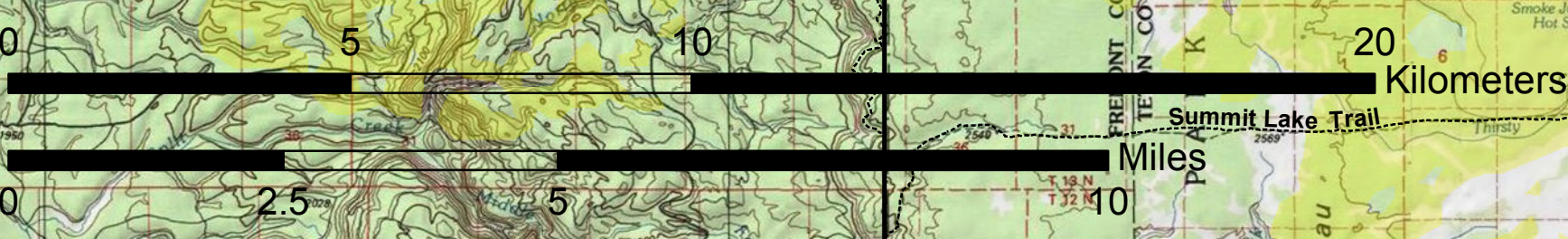
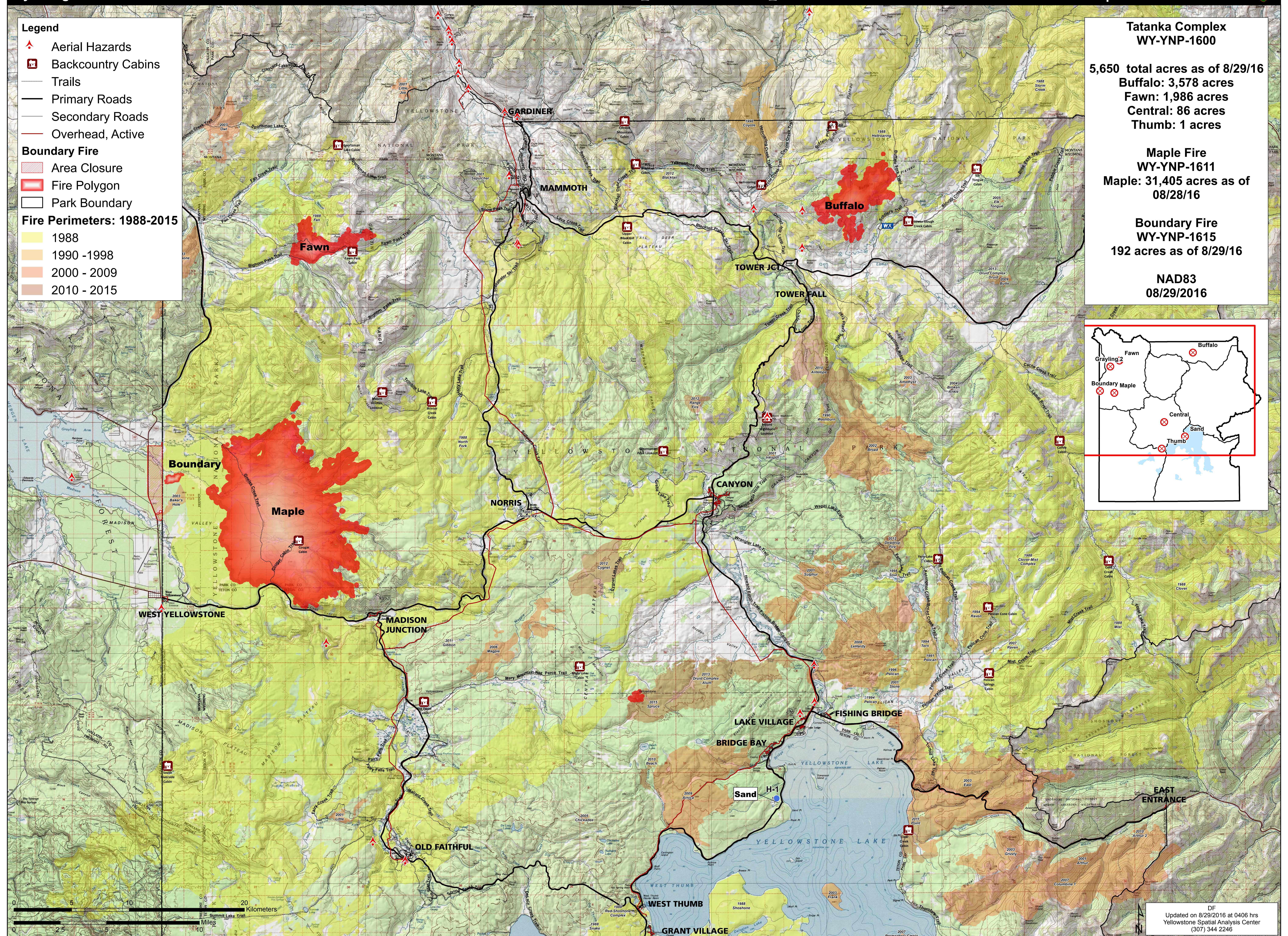
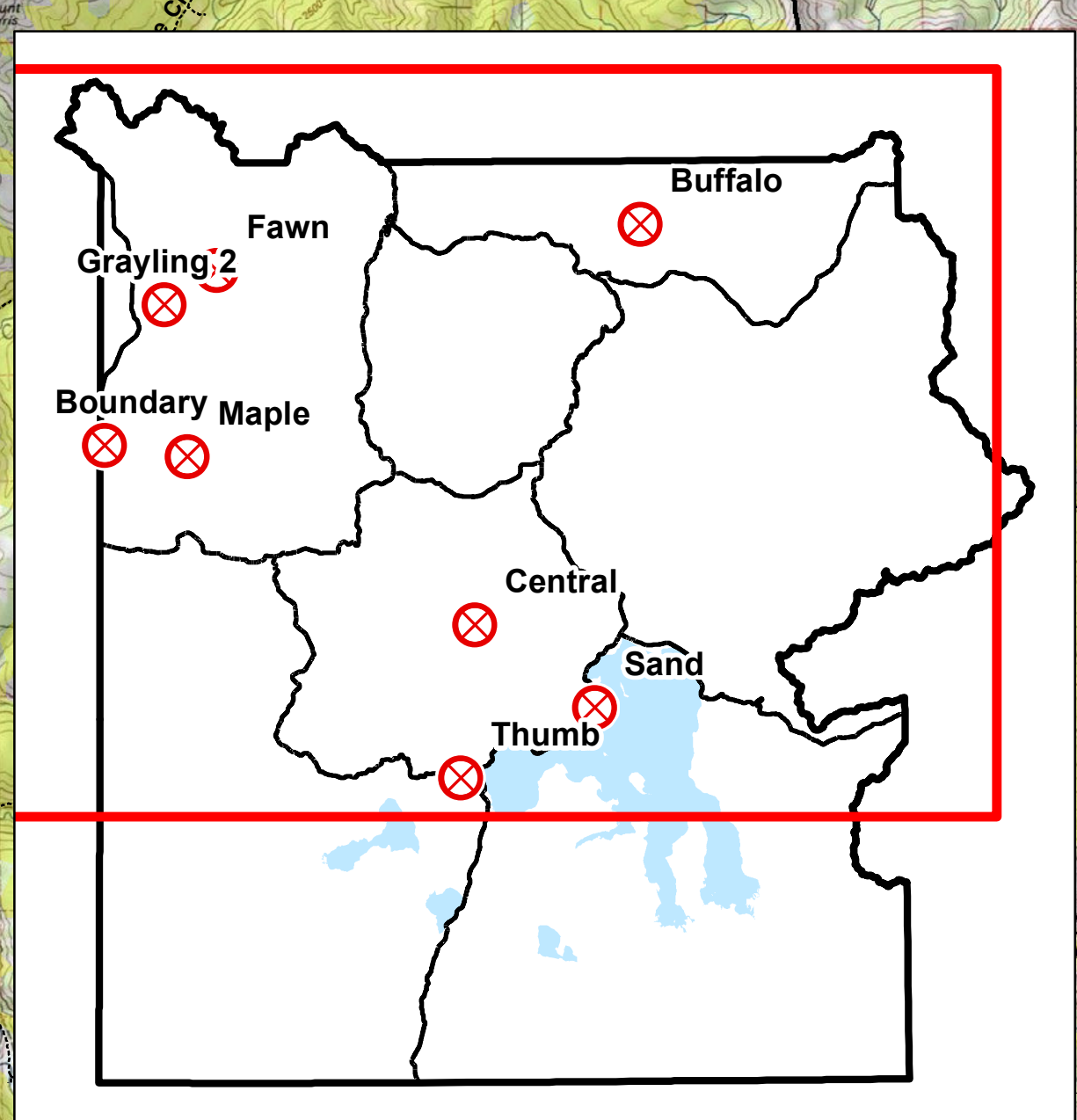
**Tatanka Complex**  
**WY-YNP-1600**

5,650 total acres as of 8/29/16  
 Buffalo: 3,578 acres  
 Fawn: 1,986 acres  
 Central: 86 acres  
 Thumb: 1 acres

**Maple Fire**  
**WY-YNP-1611**  
 Maple: 31,405 acres as of 08/28/16

**Boundary Fire**  
**WY-YNP-1615**  
 192 acres as of 8/29/16

**NAD83**  
**08/29/2016**



DF  
 Updated on 8/29/2016 at 0406 hrs  
 Yellowstone Spatial Analysis Center  
 (307) 344 2246

Path: K:\Fire\_2016Season\Individual\_Fires\2016\_Tatanka\_Complex\projects\airops\_ansi\_e\_land\_2016\_Tatanka\_Complex\_WYYP1600.mxd