

**Legend**

- Aerial Hazards
- Backcountry Cabins
- Trails
- Primary Roads
- Secondary Roads
- Overhead, Active

**Boundary Fire**

- Area Closure
- Fire Polygon
- Park Boundary

**Fire Perimeters: 1988-2015**

- 1988
- 1990 - 1998
- 2000 - 2009
- 2010 - 2015

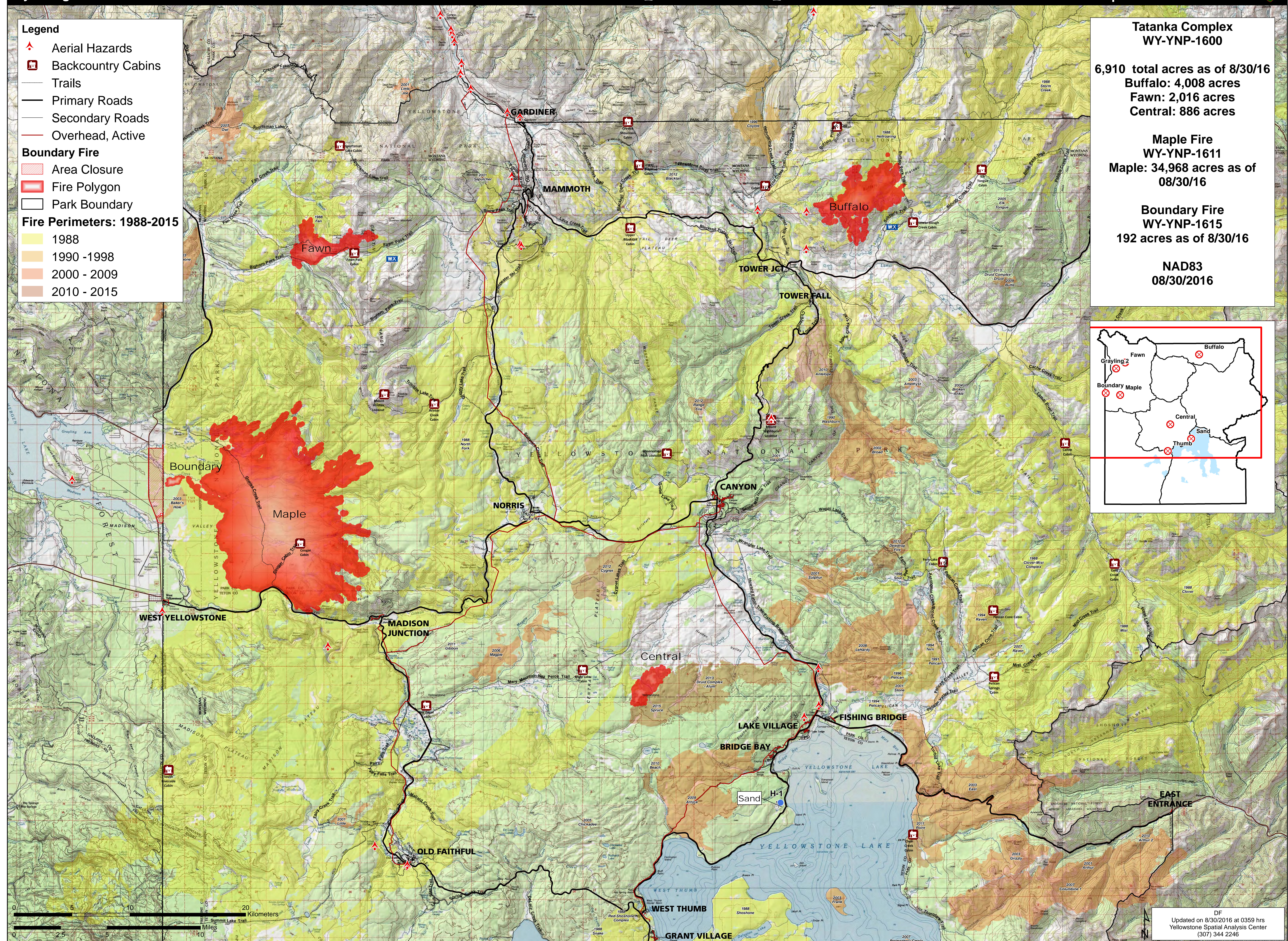
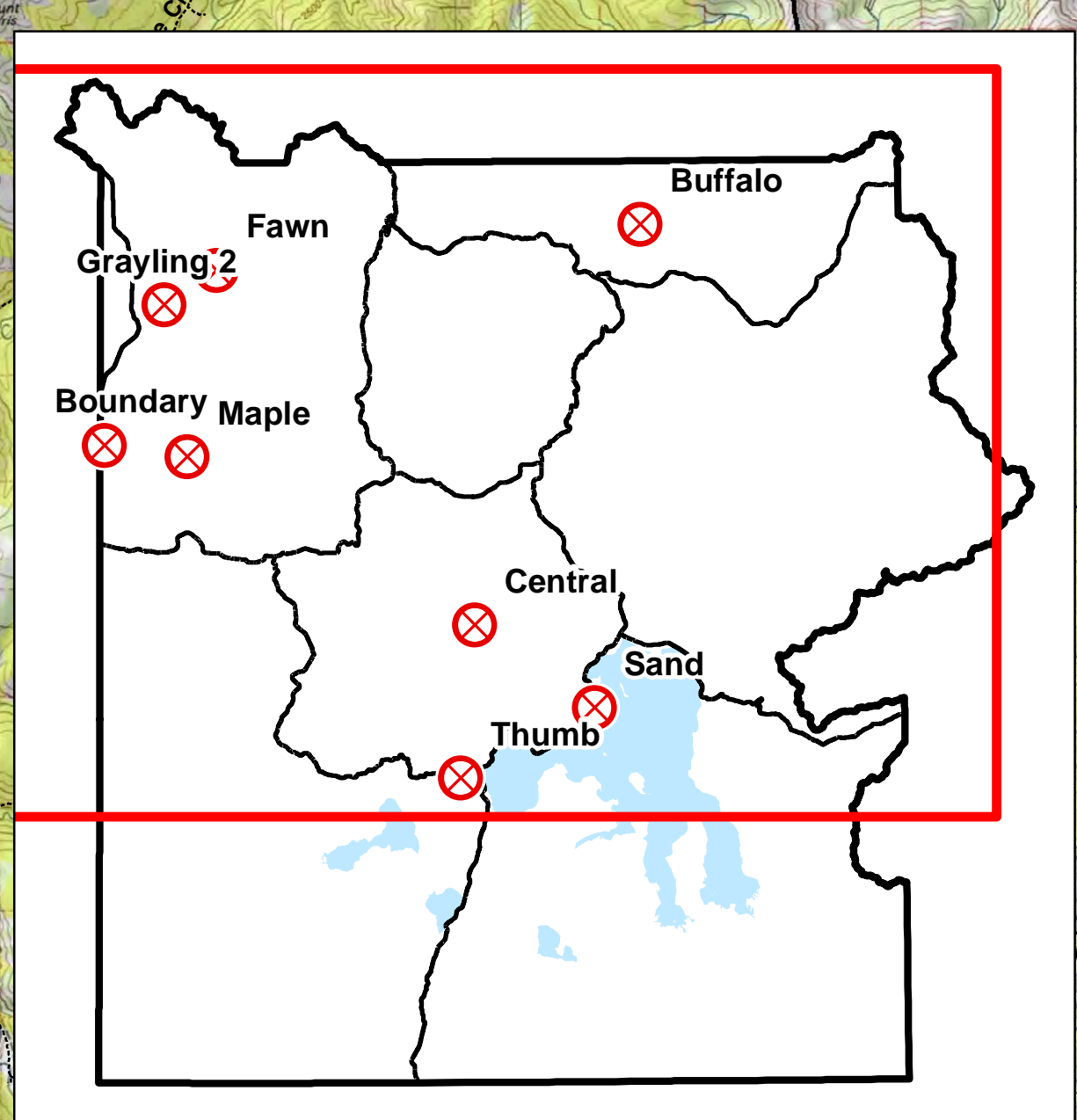
**Tatanka Complex  
WY-YNP-1600**

6,910 total acres as of 8/30/16  
 Buffalo: 4,008 acres  
 Fawn: 2,016 acres  
 Central: 886 acres

**Maple Fire  
WY-YNP-1611**  
 Maple: 34,968 acres as of 08/30/16

**Boundary Fire  
WY-YNP-1615**  
 192 acres as of 8/30/16

**NAD83  
08/30/2016**



DF  
 Updated on 8/30/2016 at 0359 hrs  
 Yellowstone Spatial Analysis Center  
 (307) 344 2246

Path: K:\Fire\_2016Season\Individual\_Fires\2016\_Tatanka\_Complex\projects\airops\_ansi\_e\_land\_2016\_Tatanka\_Complex\_WYYP1600.mxd