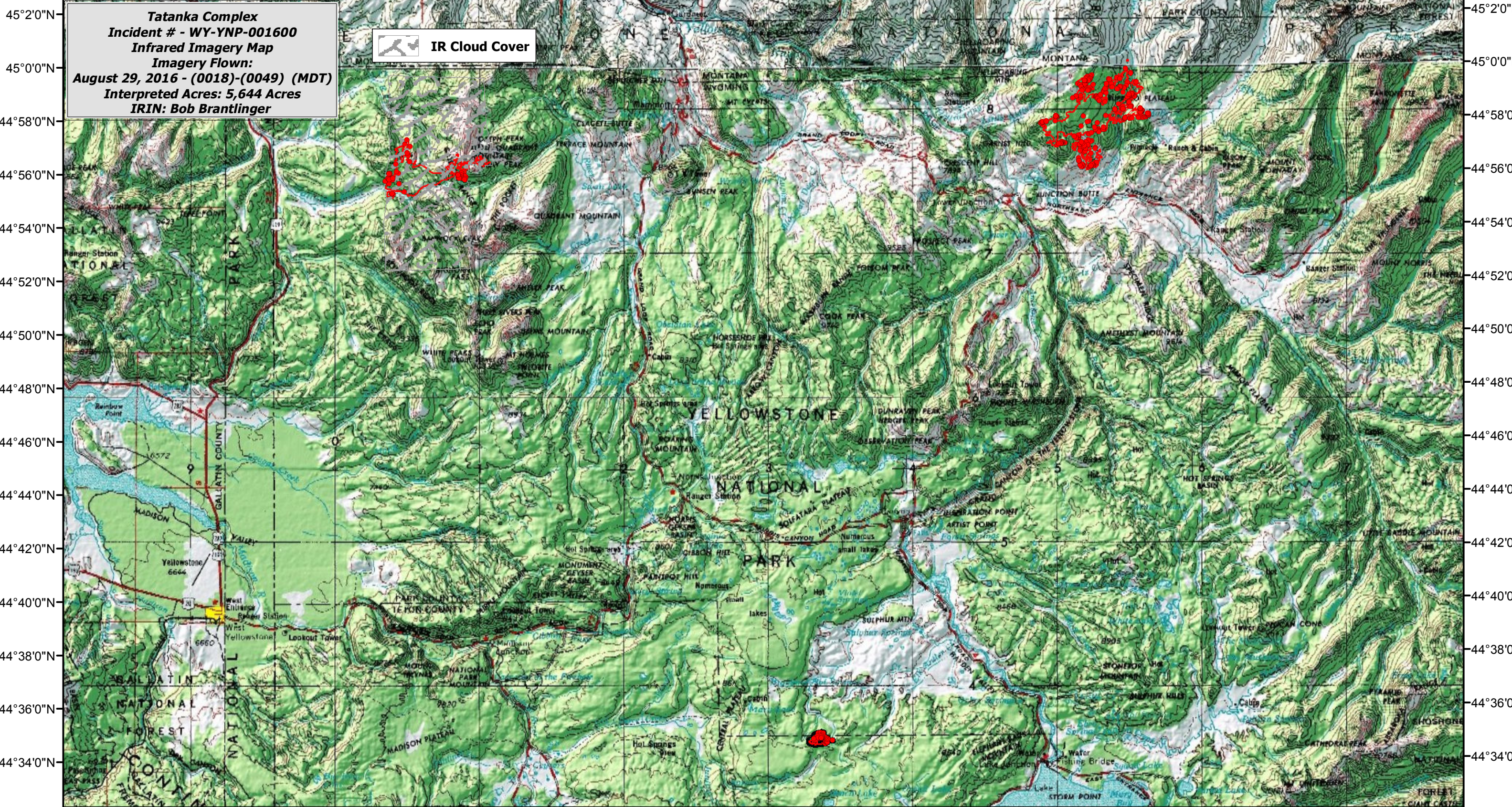






111°14'0"W 111°10'0"W 111°6'0"W 111°2'0"W 110°58'0"W 110°54'0"W 110°50'0"W 110°46'0"W 110°42'0"W 110°38'0"W 110°34'0"W 110°30'0"W 110°26'0"W 110°22'0"W 110°18'0"W 110°14'0"W 110°10'0"W 110°6'0"W 110°2'0"W



Tatanka Complex
Incident # - WY-YNP-001600
Infrared Imagery Map
Imagery Flown:
August 29, 2016 - (0018)-(0049) (MDT)
Interpreted Acres: 5,644 Acres
IRIN: Bob Brantlinger

 **IR Cloud Cover**

Legend

 Heat Perimeter	 Isolated Heat Source
 Intense Heat	 Scattered Heat Source

