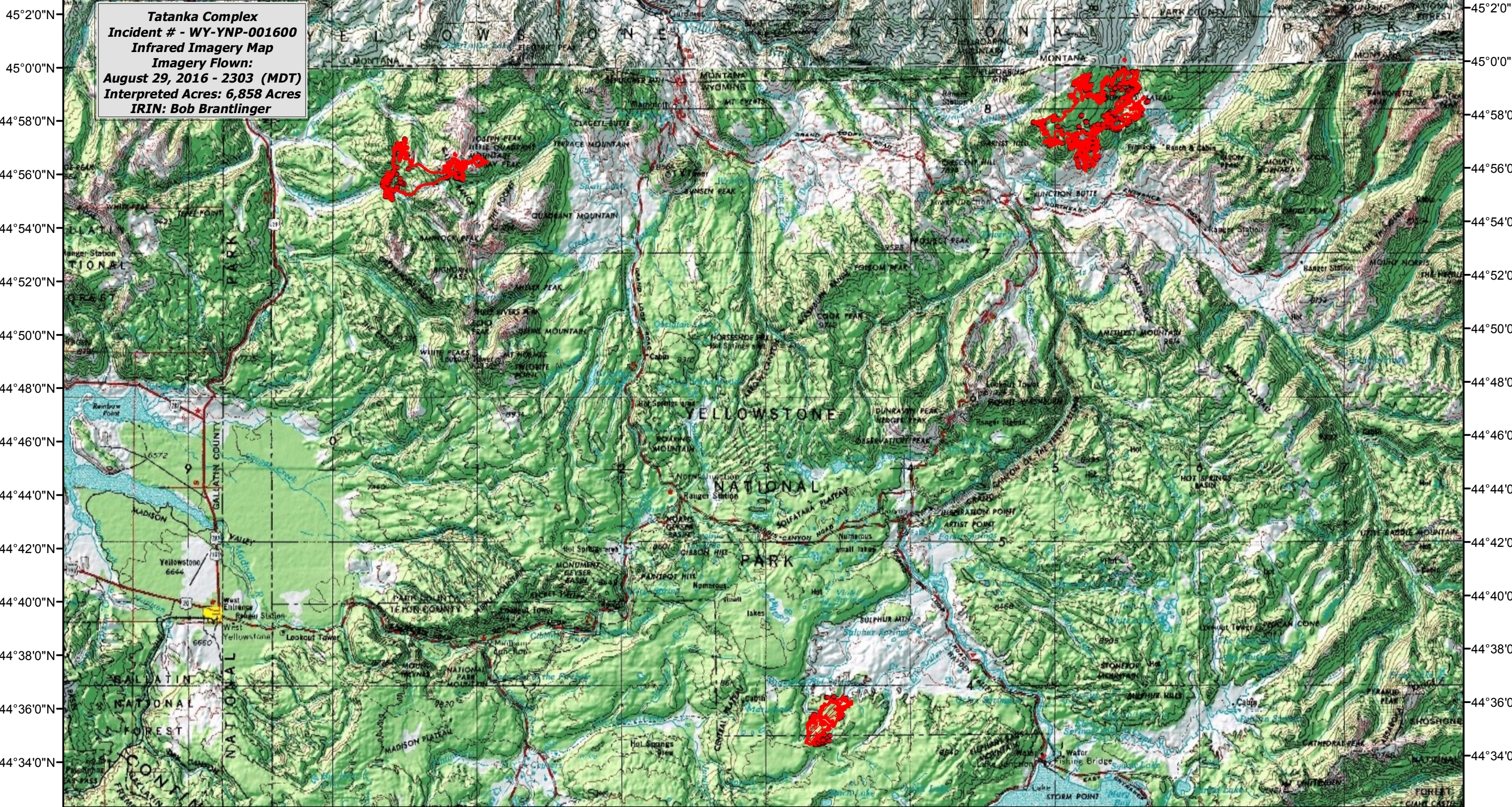






111°14'0"W 111°10'0"W 111°6'0"W 111°2'0"W 110°58'0"W 110°54'0"W 110°50'0"W 110°46'0"W 110°42'0"W 110°38'0"W 110°34'0"W 110°30'0"W 110°26'0"W 110°22'0"W 110°18'0"W 110°14'0"W 110°10'0"W 110°6'0"W 110°2'0"W



**Tatanka Complex**  
**Incident # - WY-YNP-001600**  
**Infrared Imagery Map**  
**Imagery Flown:**  
**August 29, 2016 - 2303 (MDT)**  
**Interpreted Acres: 6,858 Acres**  
**IRIN: Bob Brantlinger**

**Legend**

	<b>Heat Perimeter</b>		<b>Isolated Heat Source</b>
	<b>Intense Heat</b>		<b>Scattered Heat Source</b>

