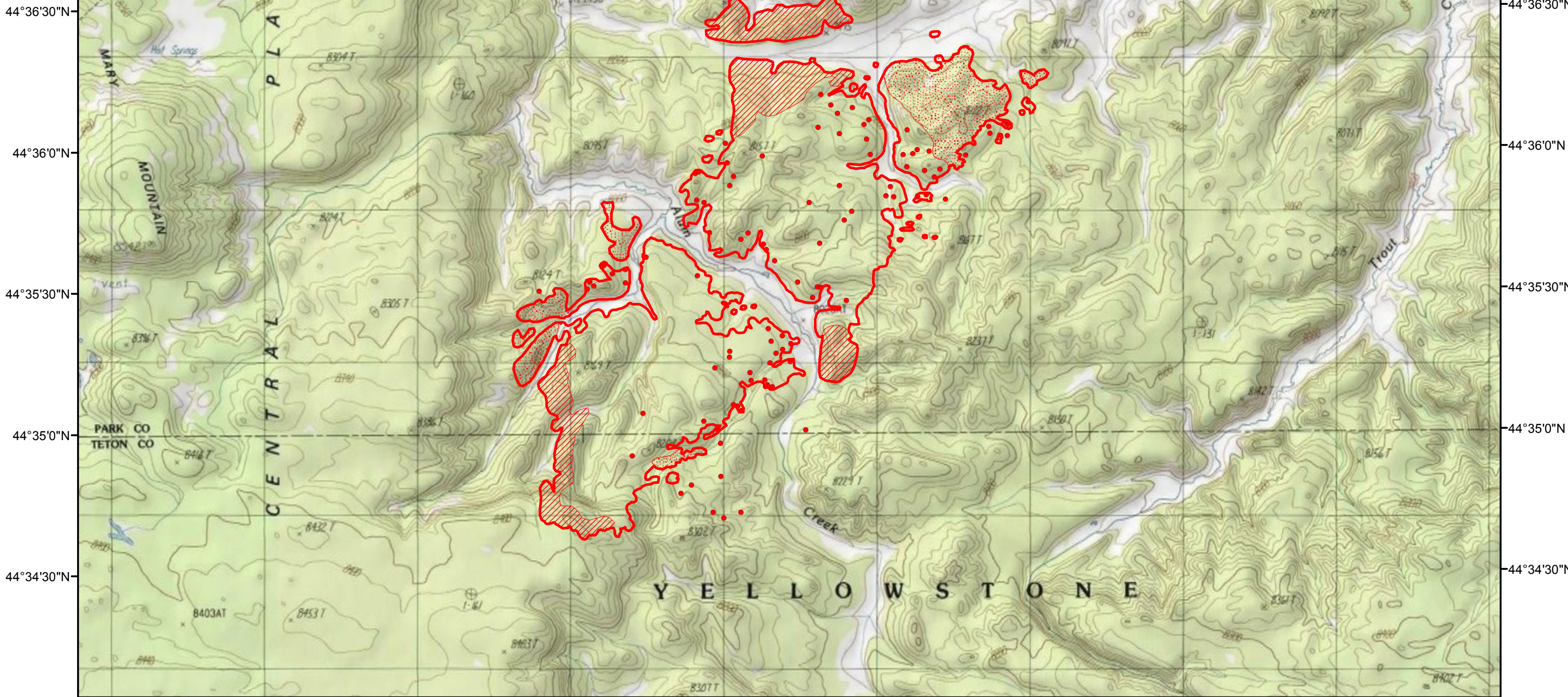


110°37'30"W 110°37'0"W 110°36'30"W 110°36'0"W 110°35'30"W 110°35'0"W 110°34'30"W 110°34'0"W 110°33'30"W 110°33'0"W 110°32'30"W 110°32'0"W 110°31'30"W 110°31'0"W 110°30'30"W





Tatanka Complex - Central
Incident # - WY-YNP-001600
Infrared Imagery Map
Imagery Flown:
August 30, 2016 - 2330 (MDT)
Interpreted Acres: 1,042 Acres
IRIN: Bob Brantlinger



44°36'30"N
44°36'0"N
44°35'30"N
44°35'0"N
44°34'30"N

44°36'30"N
44°36'0"N
44°35'30"N
44°35'0"N
44°34'30"N

Legend

	Heat Perimeter		Isolated Heat Source
	Intense Heat		Scattered Heat Source

