
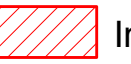
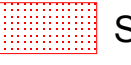
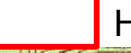
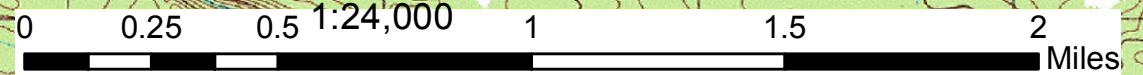
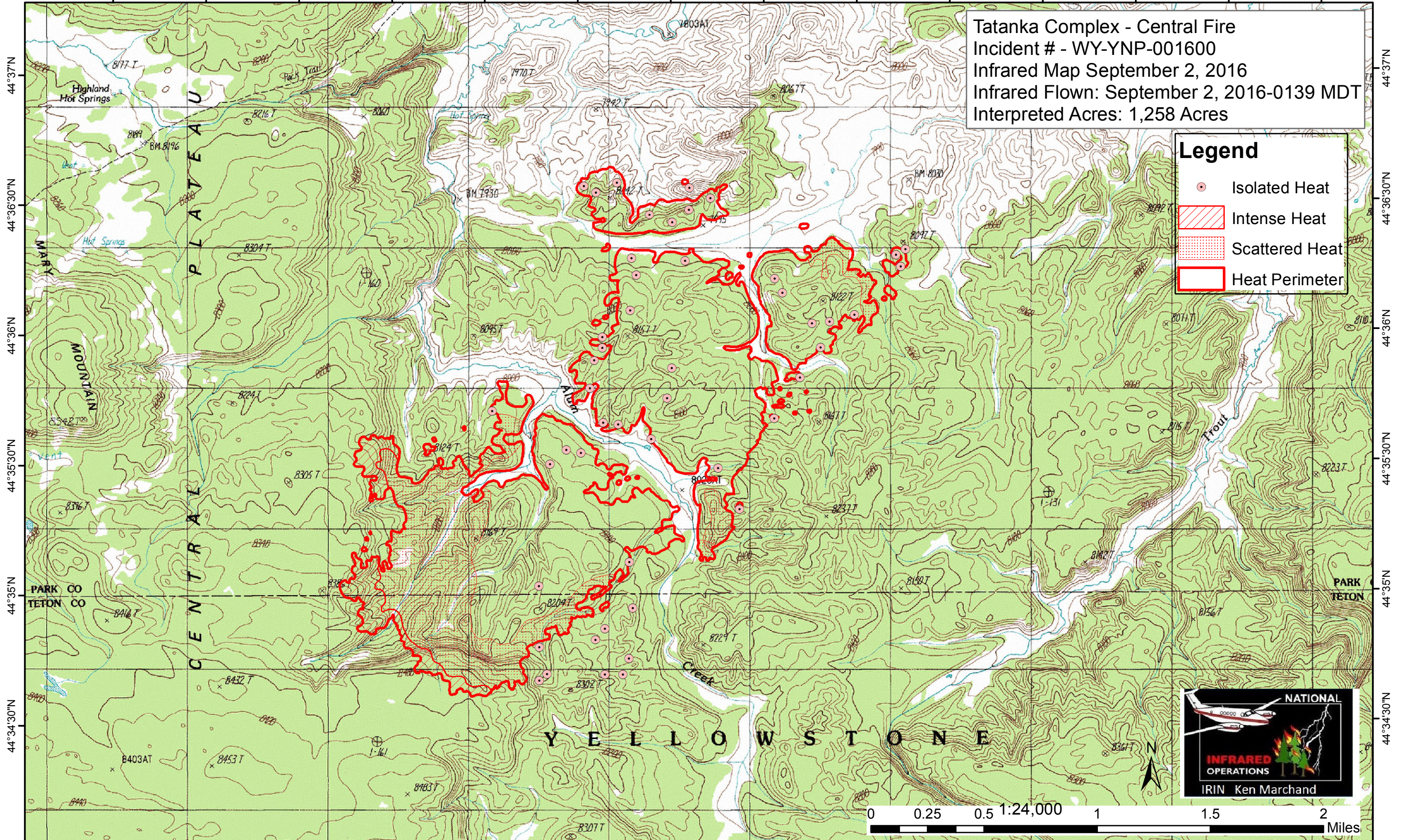


110°37'W 110°36'30"W 110°36'W 110°35'30"W 110°35'W 110°34'30"W 110°34'W 110°33'30"W 110°33'W 110°32'30"W 110°32'W 110°31'30"W 110°31'W 110°30'30"W

Tatanka Complex - Central Fire
Incident # - WY-YNP-001600
Infrared Map September 2, 2016
Infrared Flown: September 2, 2016-0139 MDT
Interpreted Acres: 1,258 Acres

Legend

-  Isolated Heat
-  Intense Heat
-  Scattered Heat
-  Heat Perimeter



110°37'W 110°36'30"W 110°36'W 110°35'30"W 110°35'W 110°34'30"W 110°34'W 110°33'30"W 110°33'W 110°32'30"W 110°32'W 110°31'30"W 110°31'W 110°30'30"W