

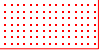



110°59'W 110°58'30"W 110°58'W 110°57'30"W 110°57'W 110°56'30"W 110°56'W 110°55'30"W 110°55'W 110°54'30"W 110°54'W 110°53'30"W 110°53'W 110°52'30"W 110°52'W 110°51'30"W 110°51'W 110°50'30"W 110°50'W

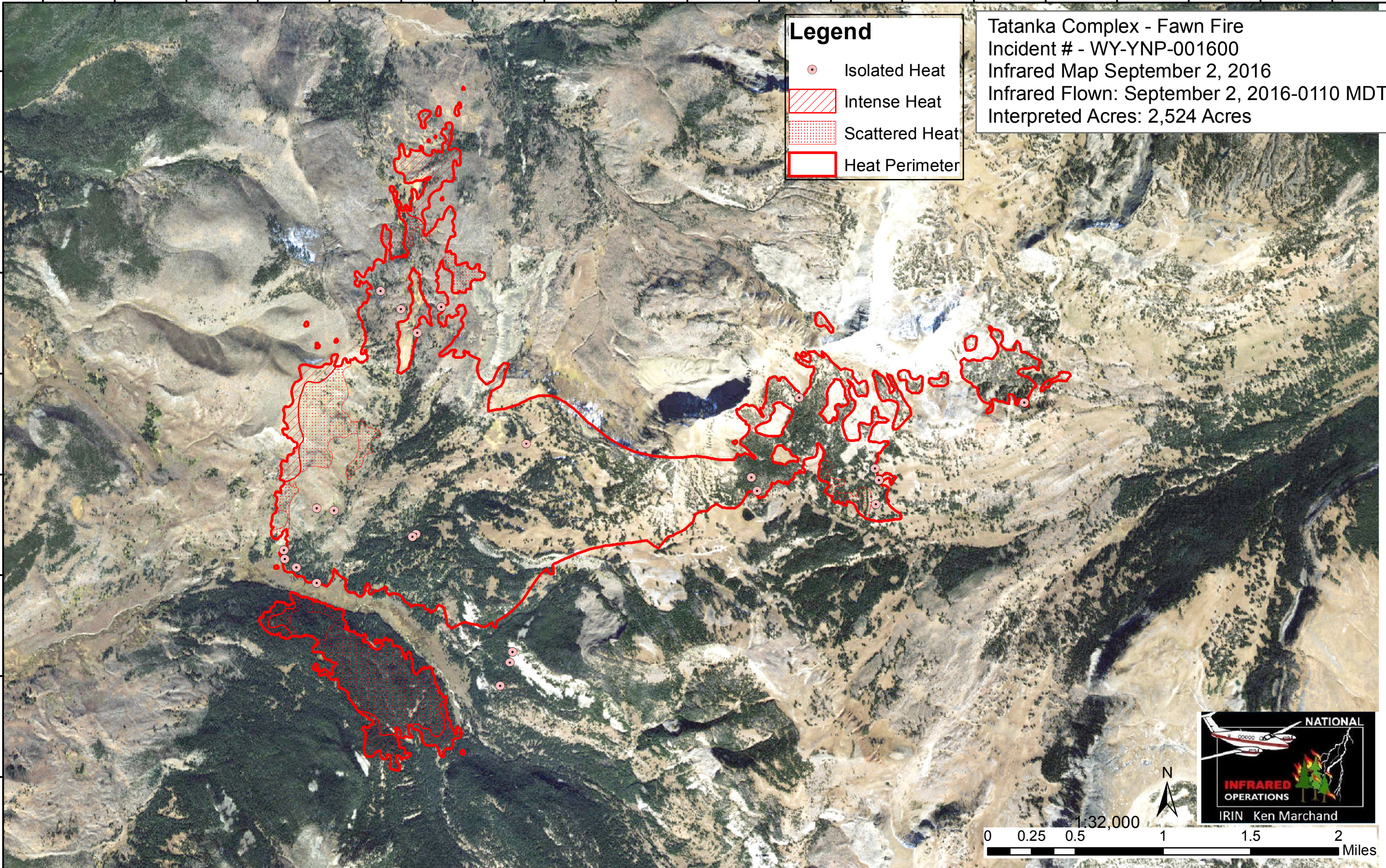
44°58'N
44°57'30"N
44°57'N
44°56'30"N
44°56'N
44°55'30"N
44°55'N
44°54'30"N

44°58'N
44°57'30"N
44°57'N
44°56'30"N
44°56'N
44°55'30"N
44°55'N
44°54'30"N

Legend

-  Isolated Heat
-  Intense Heat
-  Scattered Heat
-  Heat Perimeter

Tatanka Complex - Fawn Fire
 Incident # - WY-YNP-001600
 Infrared Map September 2, 2016
 Infrared Flown: September 2, 2016-0110 MDT
 Interpreted Acres: 2,524 Acres



110°59'W 110°58'30"W 110°58'W 110°57'30"W 110°57'W 110°56'30"W 110°56'W 110°55'30"W 110°55'W 110°54'30"W 110°54'W 110°53'30"W 110°53'W 110°52'30"W 110°52'W 110°51'30"W 110°51'W 110°50'30"W 110°50'W