

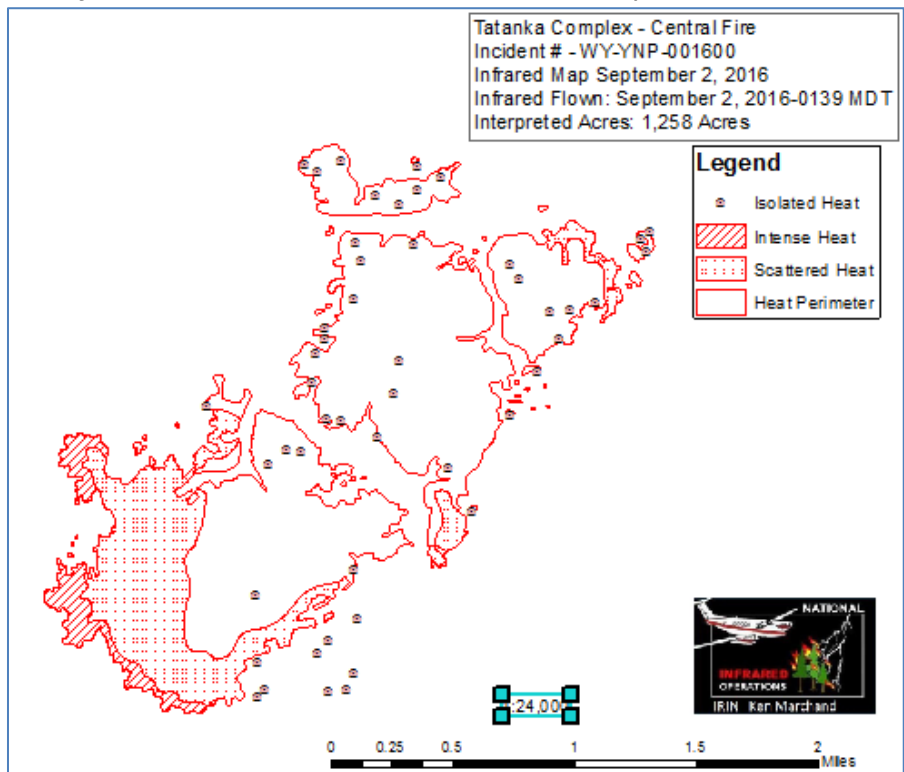
INFRARED INTERPRETER'S DAILY LOG

Incident Name: Tatanka Complex Central, Fawn , Buffalo Fires WY-YNP-001600-PPKL88	IR Interpreter(s): Ken Marchand	Local Dispatch Phone: 307-344-2181	Interpreted Size: 11,197 Acres Growth last period: 3,642 Acres
Flight Time: 0100 MDT Flight Date: 09/02/2016	Interpreter(s) location: Black Hills, Custer, SD Interpreter(s) Phone: 605 673-1444	GACC IR Liaison: Tim Stauffer GACC IR Liaison Phone: 406-529-6366	National Coordinator: Jan Johnson National Coord. Phone: 208-387-5900
Ordered By: Vicki Stephens 406-334-3226 WY-YNP	A Number: A-45	Aircraft/Scanner System: N149Z / Phoenix	Pilots/Techs: Jack Lowery / Matt Smith Woody Smith
IRIN Comments on imagery: Imagery was clear and fine for this mission.		Weather at time of flight: Clear	Flight Objective: Map heat perimeter, intense heat, scattered heat, and isolated heat
Date and Time Imagery Received by Interpreter: 09/02/2016 0100 (MDT)		Type of media for final product: Shapefiles, KMZ, PDF, log Digital files sent to: ftp.nifc.gov/incident_specific_data/n_rockies/2016_fires/2016_Tatanka_Complex/IR/20160902	
Date and Time Products Delivered to Incident: 09/02/2016 0500 (MDT)			

Comments /notes on tonight's mission and this interpretation:

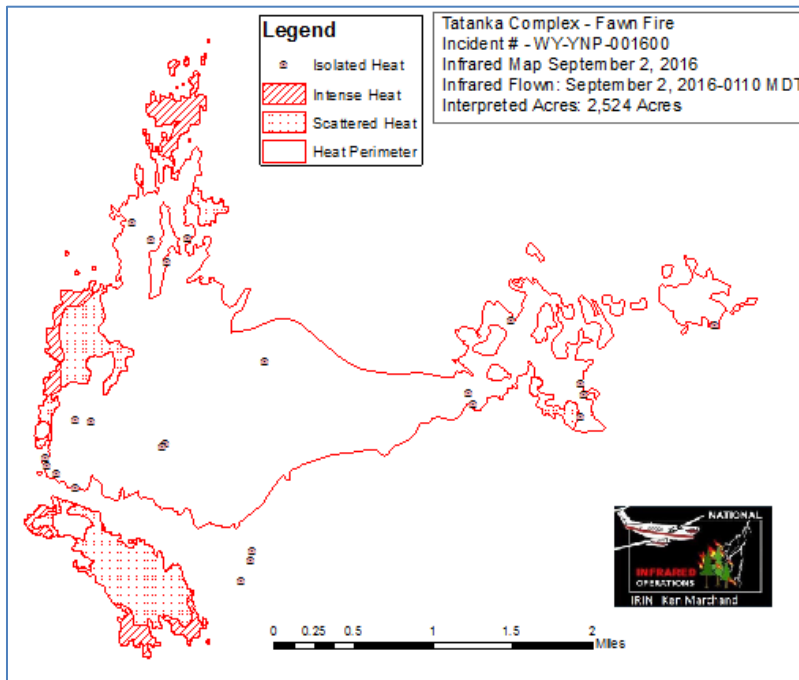
Tatanka Complex -11,197 3,642 Acres Growth
 Central Fire -1,258 216 Acres Growth in 24 hours
 Fawn Fire – 2,524 453 Acres Growth in 48 hours
 Buffalo Fire – 7,415, 2,983 Acres Growth in 48 hours

Central Fire – This fire grew in the southwest corner and is mapped as Intense Heat. Scattered Heats were found adjacent to the Intense Heat, and Isolated heats persist in that southeast part of the fire.



INFRARED INTERPRETER'S DAILY LOG

Fawn Fire – expanded on along the western edge, and the east end still holds some heat.



Buffalo Fire – was very active and expanded in the eastern direction.

