


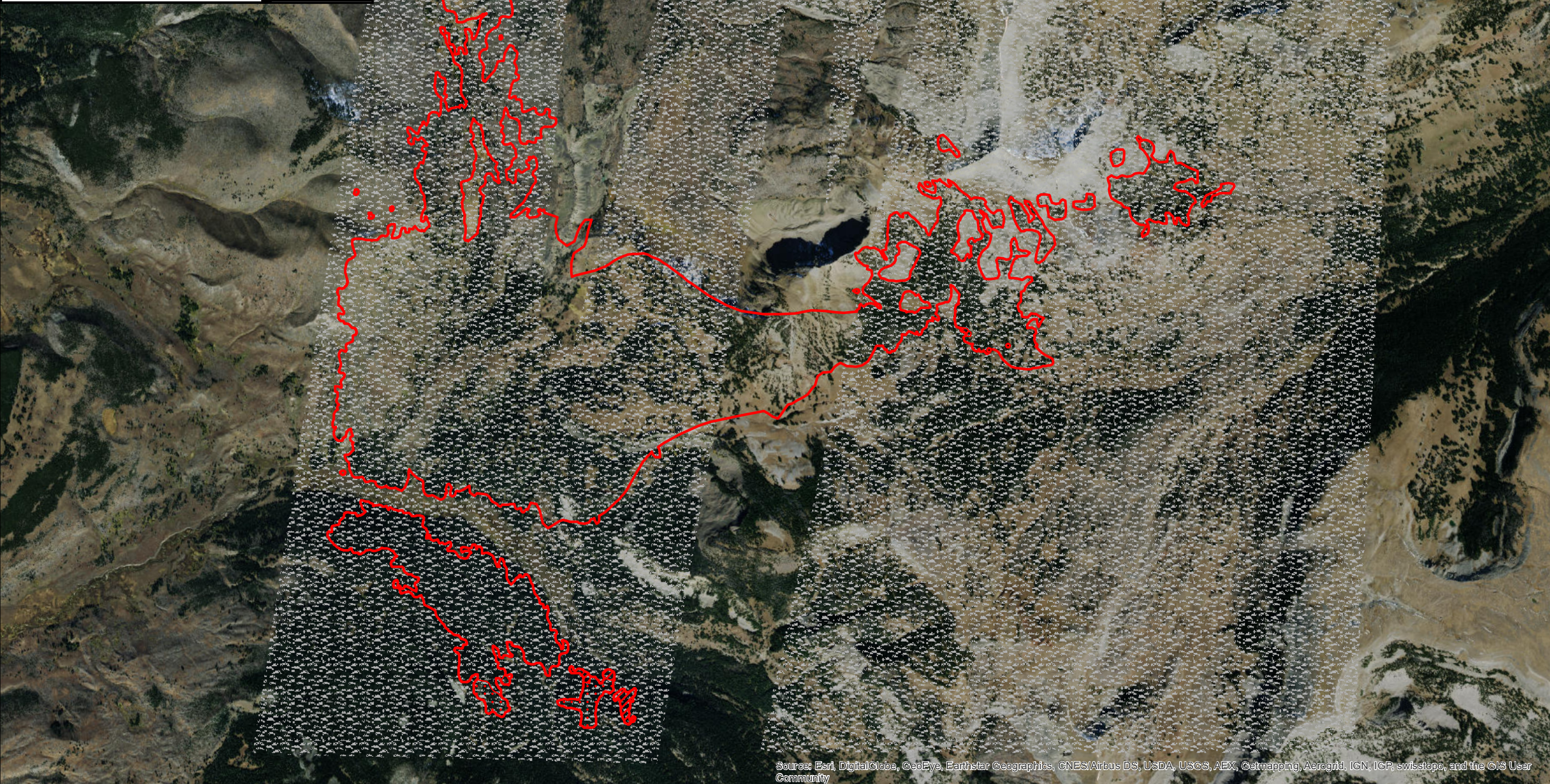
110°59'W 110°58'W 110°57'W 110°56'W 110°55'W 110°54'W 110°53'W 110°52'W 110°51'W 110°50'W

**Tantanka Complex**  
**Fawn Fire Infrared Map**  
**WY-YNP-001600**  
**Map Date: 09.03/2016**  
**Imagery Date: 09/02/2016**  
**Imagery Time: 2145 MDT**  
**IR Interpreted Acres: 2,563**  
**IRIN: Tammy Hocut**

- Isolated Heat Sources
- Heat Perimeter
- Intense Heat
- Scattered Heat
- Clouds

NAD 1983 UTM Zone 11N

0 0.1 0.2 0.4 0.6 0.8 1 Miles

Source: Esri, DigitalGlobe, GeoEye, Earthstar Geographics, CNES/Airbus DS, USDA, USGS, AEX, Getmapping, Aerogrid, IGN, ICP, swisstopo, and the GIS User Community

110°59'W 110°58'W 110°57'W 110°56'W 110°55'W 110°54'W 110°53'W 110°52'W 110°51'W