

110°37'W 110°36'30"W 110°36'W 110°35'30"W 110°35'W 110°34'30"W 110°34'W 110°33'30"W 110°33'W 110°32'30"W 110°32'W 110°31'30"W 110°31'W 110°30'30"W

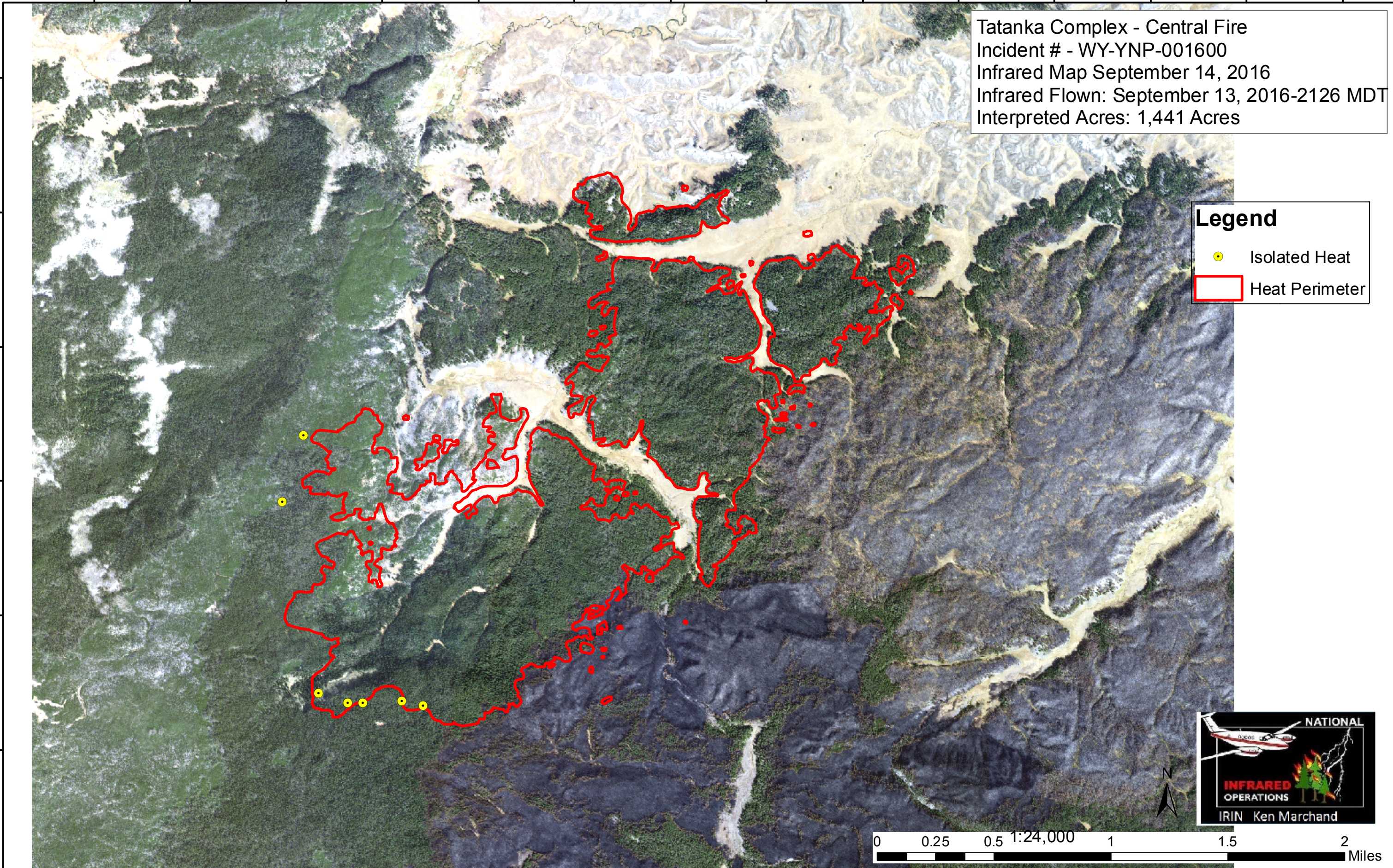
44°37'N  
44°36'30"N  
44°36'N  
44°35'30"N  
44°35'N  
44°34'30"N

44°37'N  
44°36'30"N  
44°36'N  
44°35'30"N  
44°35'N  
44°34'30"N

Tatanka Complex - Central Fire  
Incident # - WY-YNP-001600  
Infrared Map September 14, 2016  
Infrared Flown: September 13, 2016-2126 MDT  
Interpreted Acres: 1,441 Acres

**Legend**

- Isolated Heat
- Heat Perimeter



0 0.25 0.5 1:24,000 1 1.5 2 Miles

110°37'W 110°36'30"W 110°36'W 110°35'30"W 110°35'W 110°34'30"W 110°34'W 110°33'30"W 110°33'W 110°32'30"W 110°32'W 110°31'30"W 110°31'W 110°30'30"W