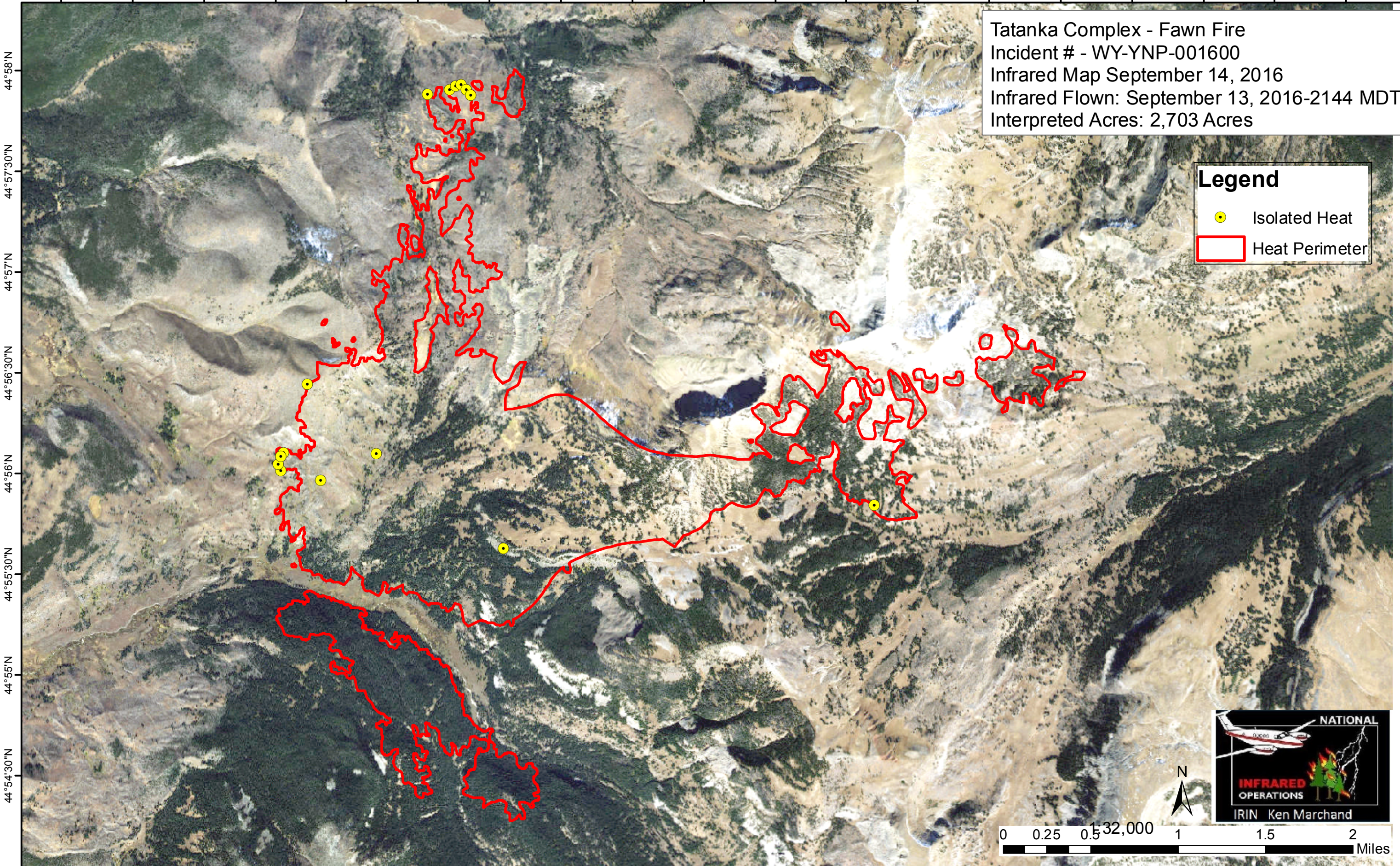


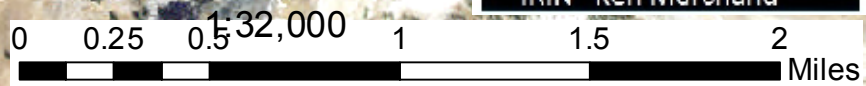
110°59'W 110°58'30"W 110°58'W 110°57'30"W 110°57'W 110°56'30"W 110°56'W 110°55'30"W 110°55'W 110°54'30"W 110°54'W 110°53'30"W 110°53'W 110°52'30"W 110°52'W 110°51'30"W 110°51'W 110°50'30"W 110°50'W



Tatanka Complex - Fawn Fire
Incident # - WY-YNP-001600
Infrared Map September 14, 2016
Infrared Flown: September 13, 2016-2144 MDT
Interpreted Acres: 2,703 Acres

Legend

- Isolated Heat
- Heat Perimeter



110°59'W 110°58'30"W 110°58'W 110°57'30"W 110°57'W 110°56'30"W 110°56'W 110°55'30"W 110°55'W 110°54'30"W 110°54'W 110°53'30"W 110°53'W 110°52'30"W 110°52'W 110°51'30"W 110°51'W 110°50'30"W 110°50'W