

112°36'0"W 112°35'0"W 112°34'0"W 112°33'0"W 112°32'0"W 112°31'0"W 112°30'0"W 112°29'0"W 112°28'0"W 112°27'0"W 112°26'0"W 112°25'0"W 112°24'0"W 112°23'0"W 112°22'0"W 112°21'0"W 112°20'0"W 112°19'0"W

OPERATIONS

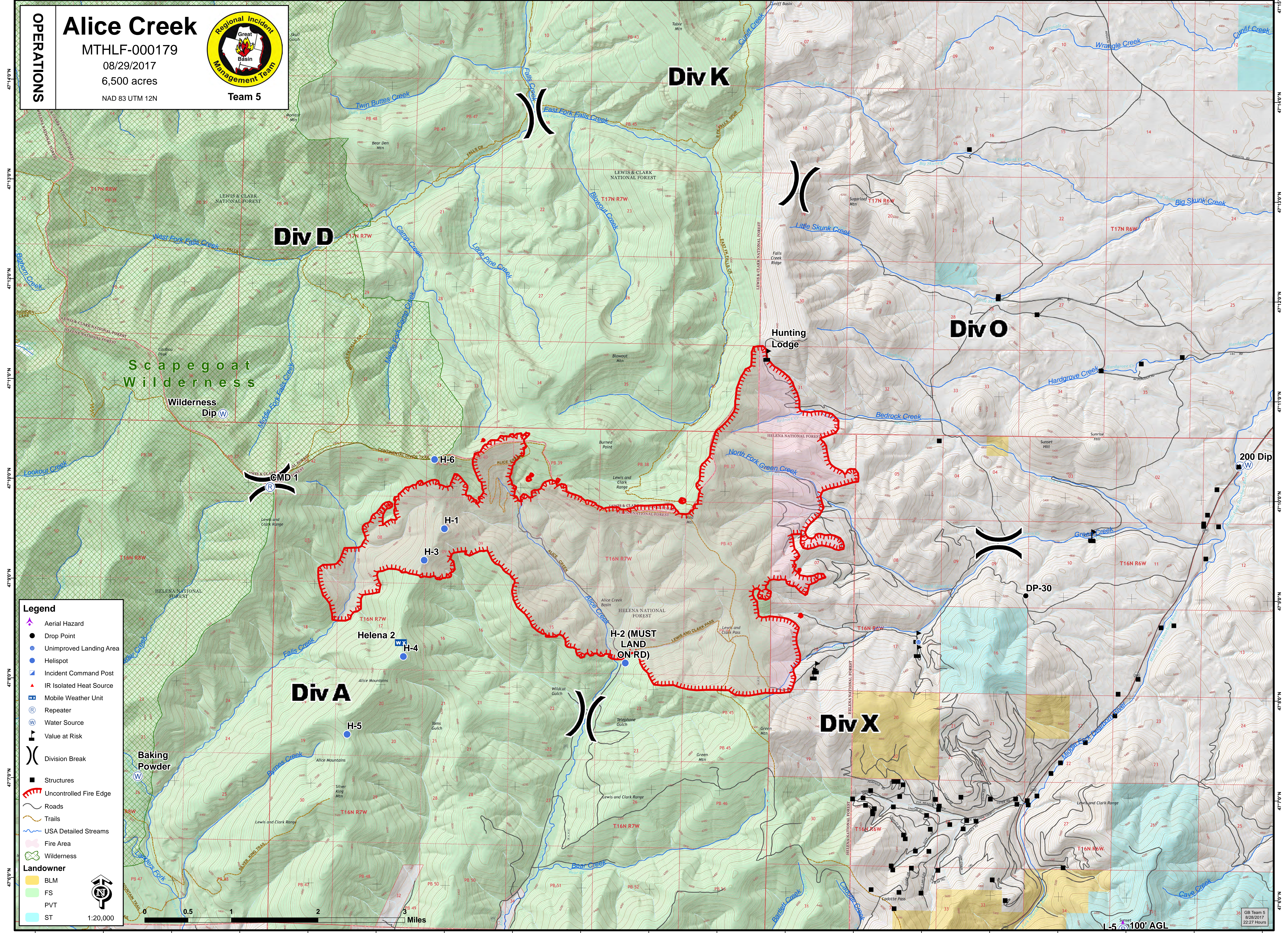
Alice Creek

MTHLF-000179

08/29/2017

6,500 acres

NAD 83 UTM 12N



Legend

- Aerial Hazard
- Drop Point
- Unimproved Landing Area
- Helispot
- Incident Command Post
- IR Isolated Heat Source
- Mobile Weather Unit
- Repeater
- Water Source
- Value at Risk
- Division Break
- Structures
- Uncontrolled Fire Edge
- Roads
- Trails
- USA Detailed Streams
- Fire Area
- Wilderness

Landowner

- BLM
- FS
- PVT
- ST

1:20,000

0 0.5 1 2 Miles

GB Team 5
8/28/2017
22:27 Hours

1:50' 100' AGL