

112°36'0"W 112°35'0"W 112°34'0"W 112°33'0"W 112°32'0"W 112°31'0"W 112°30'0"W 112°29'0"W 112°28'0"W 112°27'0"W 112°26'0"W 112°25'0"W 112°24'0"W 112°23'0"W 112°22'0"W 112°21'0"W 112°20'0"W 112°19'0"W

OPERATIONS

# Alice Creek

MT-HLF-000179  
08/30/2017  
5,930 acres  
NAD 83 UTM 12N



Team 5

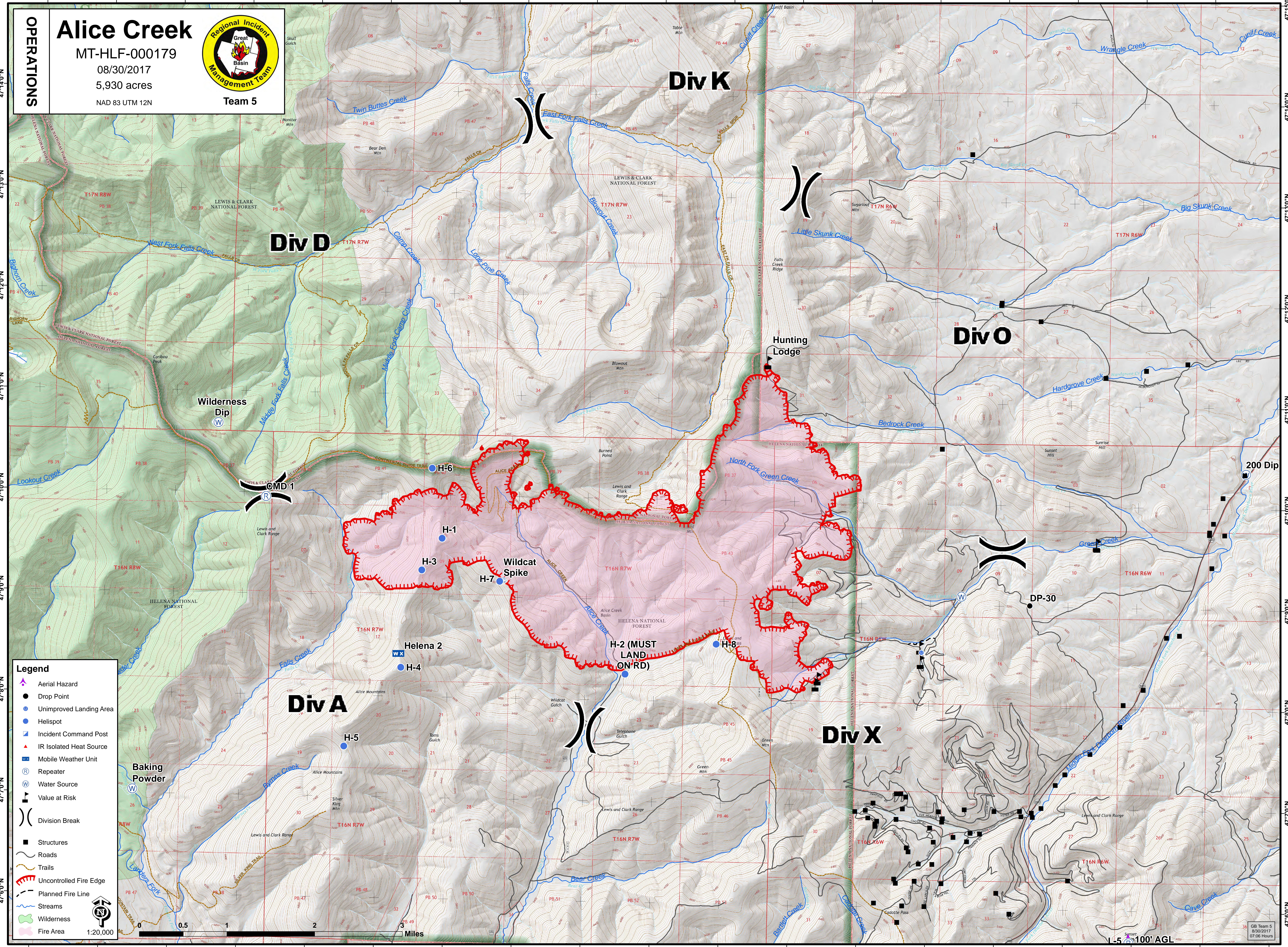
## Div D

## Div K

## Div O

## Div A

## Div X



**Legend**

- Aerial Hazard
- Drop Point
- Unimproved Landing Area
- Helispot
- Incident Command Post
- IR Isolated Heat Source
- Mobile Weather Unit
- Repeater
- Water Source
- Value at Risk
- Division Break
- Structures
- Roads
- Trails
- Uncontrolled Fire Edge
- Planned Fire Line
- Streams
- Wilderness
- Fire Area

Scale: 1:20,000

0 0.5 1 2 Miles

15' 100' AGL

47°14'0"N  
47°13'0"N  
47°12'0"N  
47°11'0"N  
47°10'0"N  
47°9'0"N  
47°8'0"N  
47°7'0"N  
47°6'0"N

112°36'0"W 112°35'0"W 112°34'0"W 112°33'0"W 112°32'0"W 112°31'0"W 112°30'0"W 112°29'0"W 112°28'0"W 112°27'0"W 112°26'0"W 112°25'0"W 112°24'0"W 112°23'0"W 112°22'0"W 112°21'0"W 112°20'0"W 112°19'0"W 112°18'0"W

GB Team 5  
8/30/2017  
07:06 Hours