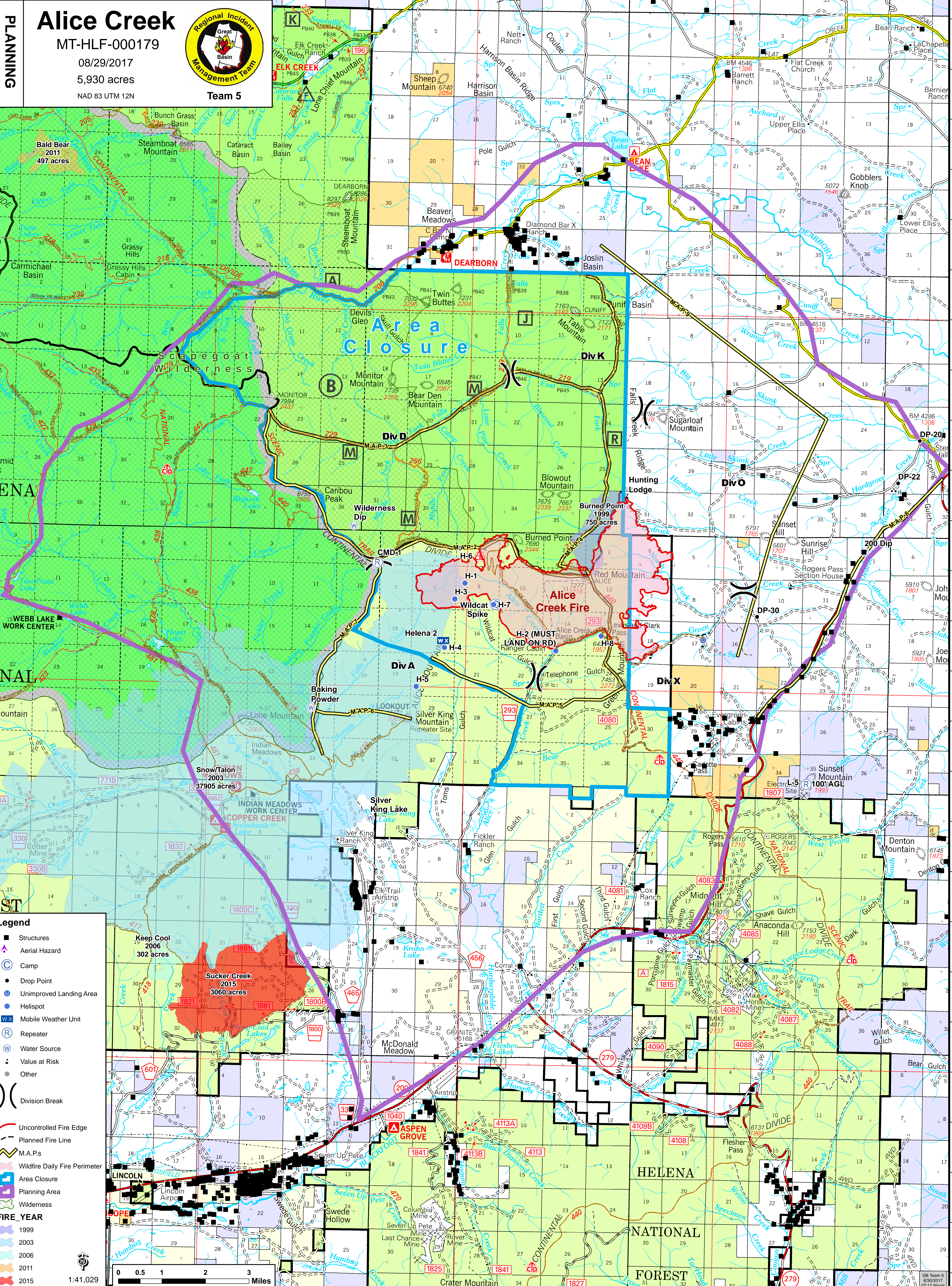


112°44'0"W 112°43'0"W 112°42'0"W 112°41'0"W 112°40'0"W 112°39'0"W 112°38'0"W 112°37'0"W 112°36'0"W 112°35'0"W 112°34'0"W 112°33'0"W 112°32'0"W 112°31'0"W 112°30'0"W 112°29'0"W 112°28'0"W 112°27'0"W 112°26'0"W 112°25'0"W 112°24'0"W 112°23'0"W 112°22'0"W 112°21'0"W 112°20'0"W 112°19'0"W 112°18'0"W 112°17'0"W



**PLANNING**  
**Alice Creek**  
MT-HLF-000179  
08/29/2017  
5,930 acres  
NAD 83 UTM 12N



**Legend**

- Structures
- Aerial Hazard
- Camp
- Drop Point
- Unimproved Landing Area
- Helispot
- Mobile Weather Unit
- Repeater
- Water Source
- Value at Risk
- Other
- Division Break
- Uncontrolled Fire Edge
- Planned Fire Line
- M.A.P.s
- Wildfire Daily Fire Perimeter
- Area Closure
- Planning Area
- Wilderness

**FIRE\_YEAR**

- 1999
- 2003
- 2006
- 2011
- 2015

0 0.5 1 2 3 Miles  
1:41,029

47°21'0"N 47°20'0"N 47°19'0"N 47°18'0"N 47°17'0"N 47°16'0"N 47°15'0"N 47°14'0"N 47°13'0"N 47°12'0"N 47°11'0"N 47°10'0"N 47°9'0"N 47°8'0"N 47°7'0"N 47°6'0"N 47°5'0"N 47°4'0"N 47°3'0"N 47°2'0"N 47°1'0"N 46°59'0"N 46°58'0"N 46°57'0"N 46°56'0"N 46°55'0"N 46°54'0"N 46°53'0"N 46°52'0"N 46°51'0"N 46°50'0"N 46°49'0"N 46°48'0"N 46°47'0"N 46°46'0"N 46°45'0"N 46°44'0"N 46°43'0"N 46°42'0"N 46°41'0"N 46°40'0"N 46°39'0"N 46°38'0"N 46°37'0"N 46°36'0"N 46°35'0"N 46°34'0"N 46°33'0"N 46°32'0"N 46°31'0"N 46°30'0"N 46°29'0"N 46°28'0"N 46°27'0"N 46°26'0"N 46°25'0"N 46°24'0"N 46°23'0"N 46°22'0"N 46°21'0"N 46°20'0"N 46°19'0"N 46°18'0"N 46°17'0"N 46°16'0"N 46°15'0"N 46°14'0"N 46°13'0"N 46°12'0"N 46°11'0"N 46°10'0"N 46°9'0"N 46°8'0"N 46°7'0"N 46°6'0"N 46°5'0"N 46°4'0"N 46°3'0"N 46°2'0"N 46°1'0"N 46°0'0"N