

112°36'0"W 112°35'0"W 112°34'0"W 112°33'0"W 112°32'0"W 112°31'0"W 112°30'0"W 112°29'0"W 112°28'0"W 112°27'0"W 112°26'0"W 112°25'0"W 112°24'0"W 112°23'0"W 112°22'0"W 112°21'0"W 112°20'0"W 112°19'0"W

OPERATIONS

Alice Creek

MT-HLF-000179
08/31/2017
6,850 acres
NAD 83 UTM 12N



Div D

Div K

Div O

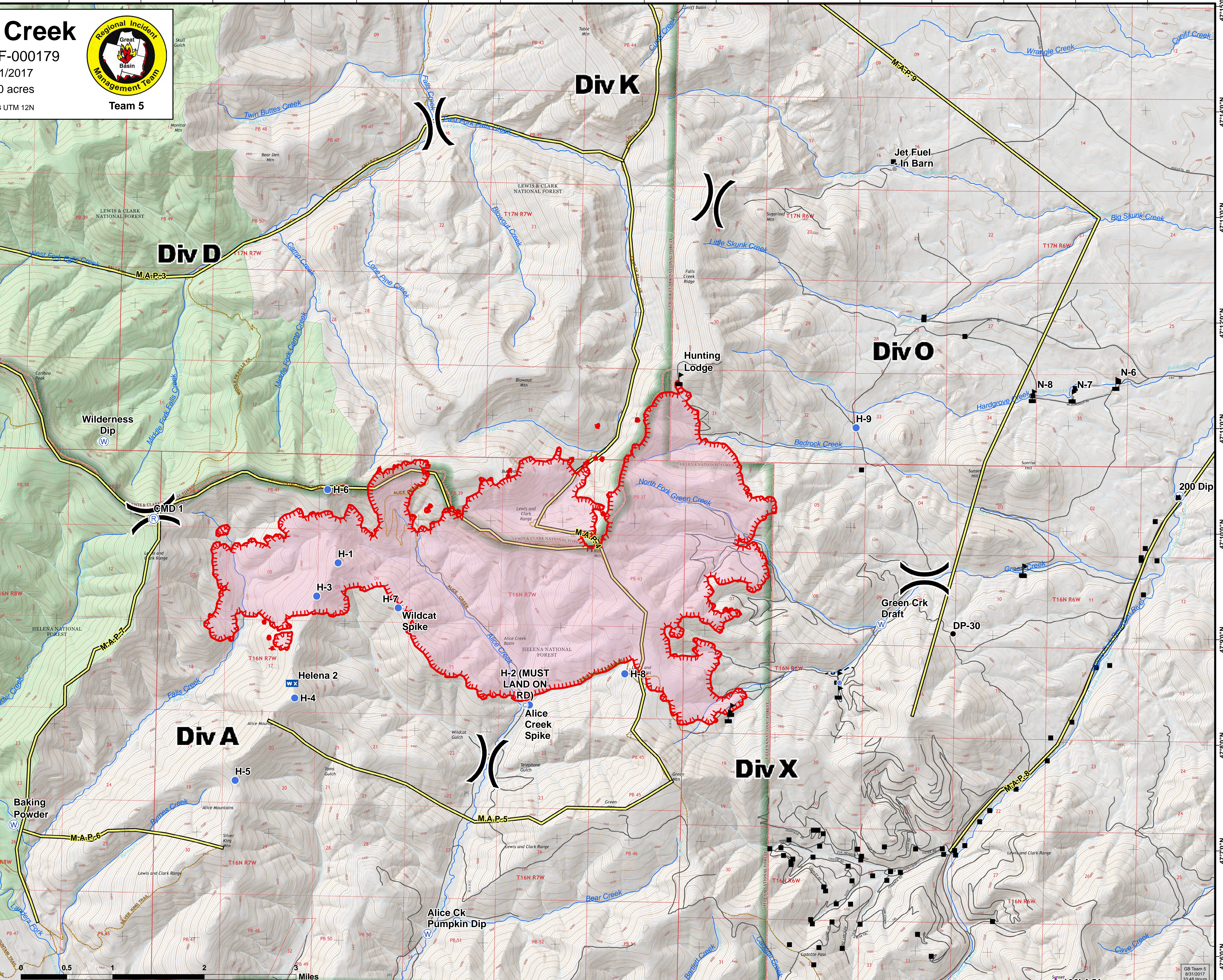
Div A

Div X

Legend

- Aerial Hazard
- Drop Point
- Unimproved Landing Area
- Helispot
- Incident Command Post
- IR Isolated Heat Source
- Mobile Weather Unit
- Repeater
- Water Source
- Value at Risk
- Division Break
- Structures
- Roads
- Trails
- M.A.P.s
- Uncontrolled Fire Edge
- Planned Fire Line
- Streams
- Wilderness
- Fire Area

Scale: 1:20,000
0 0.5 1 2 Miles



47°14'0"N 47°13'0"N 47°12'0"N 47°11'0"N 47°10'0"N 47°9'0"N 47°8'0"N 47°7'0"N 47°6'0"N

112°36'0"W 112°35'0"W 112°34'0"W 112°33'0"W 112°32'0"W 112°31'0"W 112°30'0"W 112°29'0"W 112°28'0"W 112°27'0"W 112°26'0"W 112°25'0"W 112°24'0"W 112°23'0"W 112°22'0"W 112°21'0"W 112°20'0"W 112°19'0"W 112°18'0"W

GB Team 5
8/31/2017
10:48 Hours