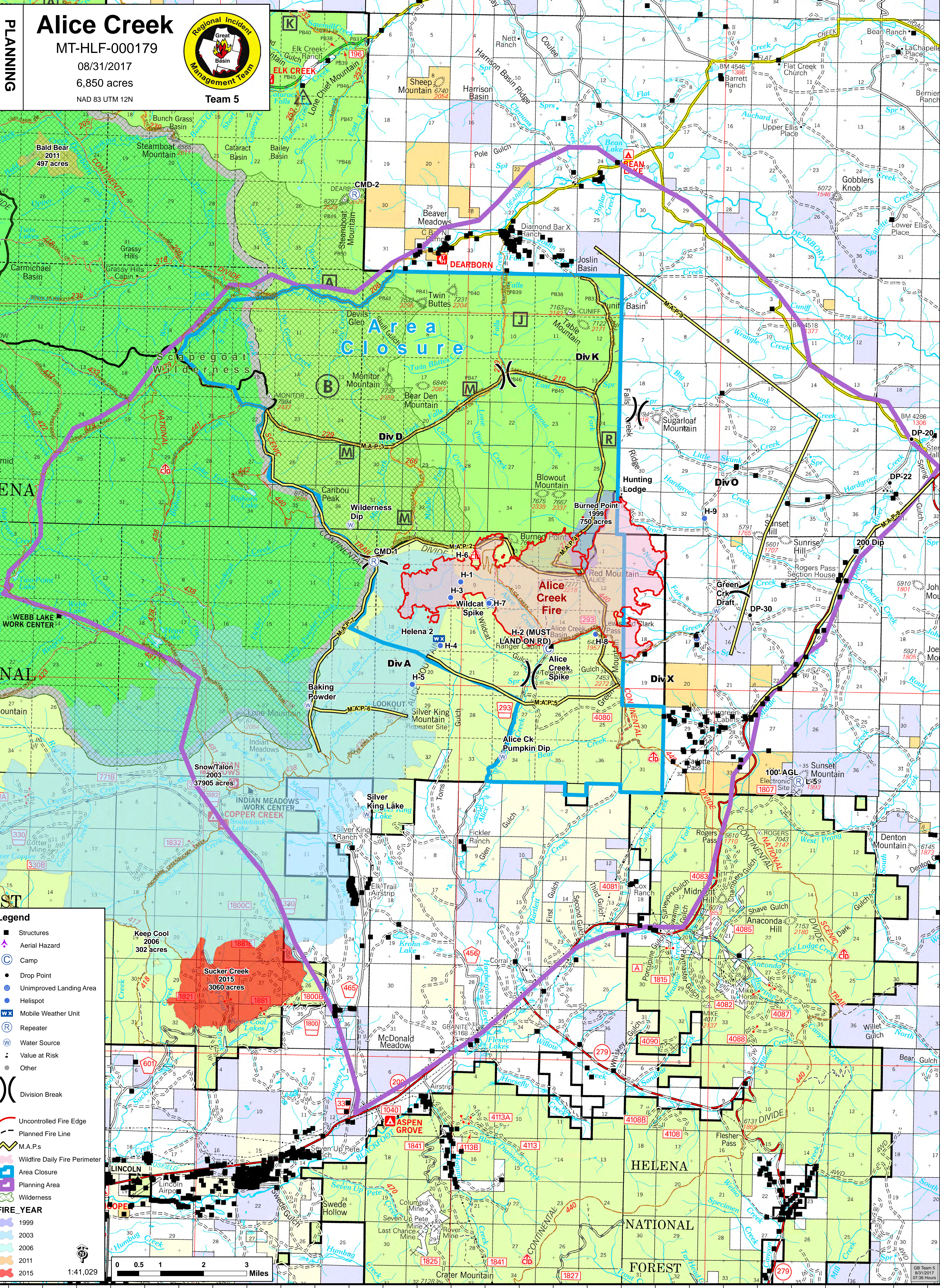


112°44'0"W 112°43'0"W 112°42'0"W 112°41'0"W 112°40'0"W 112°39'0"W 112°38'0"W 112°37'0"W 112°36'0"W 112°35'0"W 112°34'0"W 112°33'0"W 112°32'0"W 112°31'0"W 112°30'0"W 112°29'0"W 112°28'0"W 112°27'0"W 112°26'0"W 112°25'0"W 112°24'0"W 112°23'0"W 112°22'0"W 112°21'0"W 112°20'0"W 112°19'0"W 112°18'0"W 112°17'0"W



# Alice Creek

MT-HLF-000179  
08/31/2017  
6,850 acres  
NAD 83 UTM 12N



**PLANNING**

**Legend**

- Structures
- Aerial Hazard
- Camp
- Drop Point
- Unimproved Landing Area
- Helispot
- Mobile Weather Unit
- Repeater
- Water Source
- Value at Risk
- Other
- Division Break
- Uncontrolled Fire Edge
- Planned Fire Line
- M.A.P.s
- Wildfire Daily Fire Perimeter
- Area Closure
- Planning Area
- Wilderness

**FIRE YEAR**

- 1999
- 2003
- 2006
- 2011
- 2015

0 0.5 1 2 3 Miles

1:41,029

47°21'0"N 47°20'0"N 47°19'0"N 47°18'0"N 47°17'0"N 47°16'0"N 47°15'0"N 47°14'0"N 47°13'0"N 47°12'0"N 47°11'0"N 47°10'0"N 47°9'0"N 47°8'0"N 47°7'0"N 47°6'0"N 47°5'0"N 47°4'0"N 47°3'0"N 47°2'0"N 47°1'0"N 46°59'0"N 46°58'0"N 46°57'0"N 46°56'0"N 46°55'0"N 46°54'0"N 46°53'0"N 46°52'0"N 46°51'0"N 46°50'0"N