

112°36'0"W 112°35'0"W 112°34'0"W 112°33'0"W 112°32'0"W 112°31'0"W 112°30'0"W 112°29'0"W 112°28'0"W 112°27'0"W 112°26'0"W 112°25'0"W 112°24'0"W 112°23'0"W 112°22'0"W 112°21'0"W 112°20'0"W 112°19'0"W

OPERATIONS

**Alice Creek**  
MT-HLF-000179  
9/1/2017  
7,008 acres  
NAD 83 UTM 12N



**Div D**

**Div K**

**Div O**

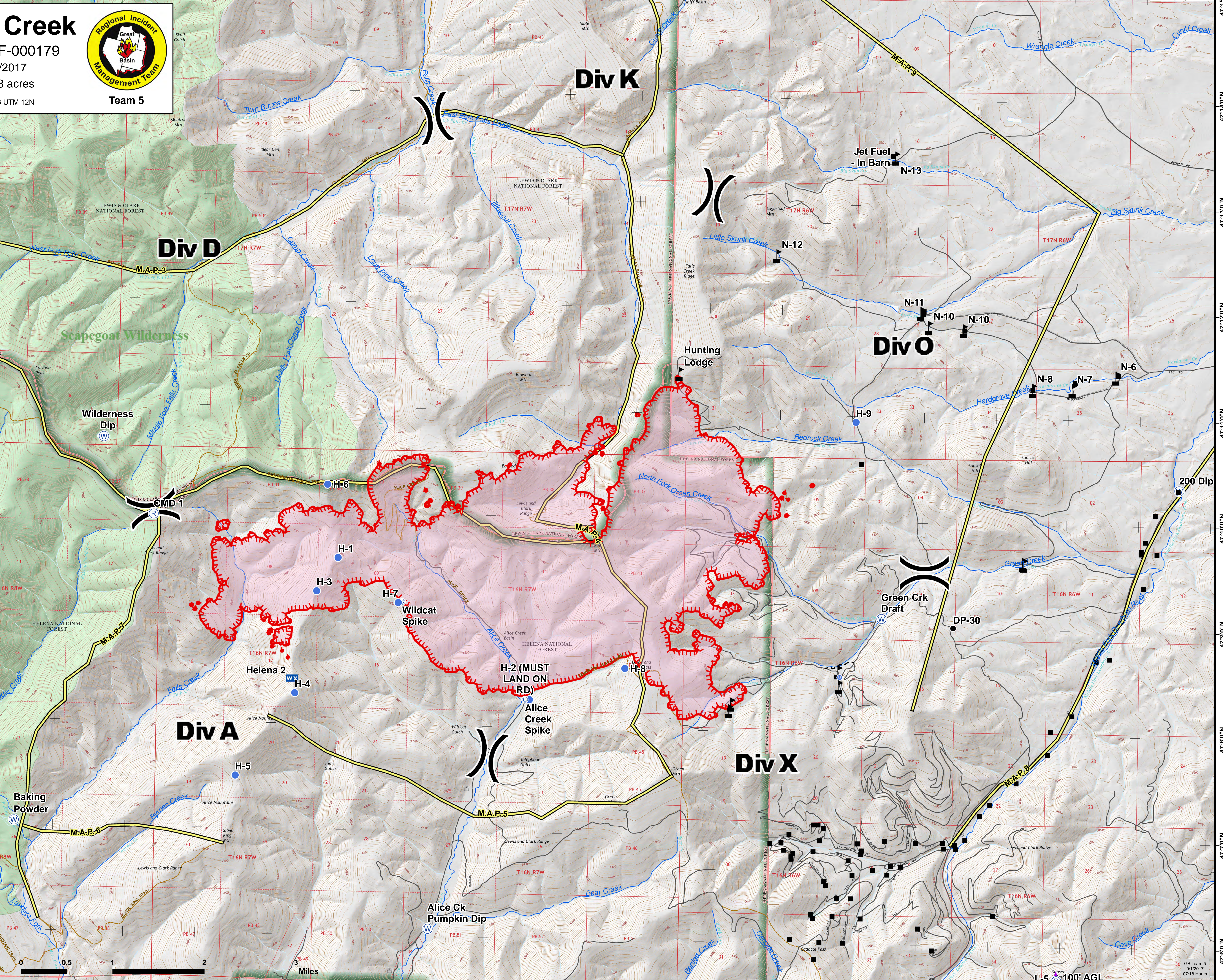
**Div A**

**Div X**

**Legend**

- Aerial Hazard
- Drop Point
- Unimproved Landing Area
- Helispot
- Incident Command Post
- IR Isolated Heat Source
- Mobile Weather Unit
- Repeater
- Water Source
- Value at Risk
- Division Break
- Structures
- Roads
- Trails
- M.A.P.s
- Uncontrolled Fire Edge
- Planned Fire Line
- Streams
- Wilderness
- Fire Area

Scale: 1:20,000  
0 0.5 1 2 Miles



47°14'0"N 47°13'0"N 47°12'0"N 47°11'0"N 47°10'0"N 47°9'0"N 47°8'0"N 47°7'0"N 47°6'0"N

OPERATIONS

GB Team 5  
9/1/2017  
07:18 Hours