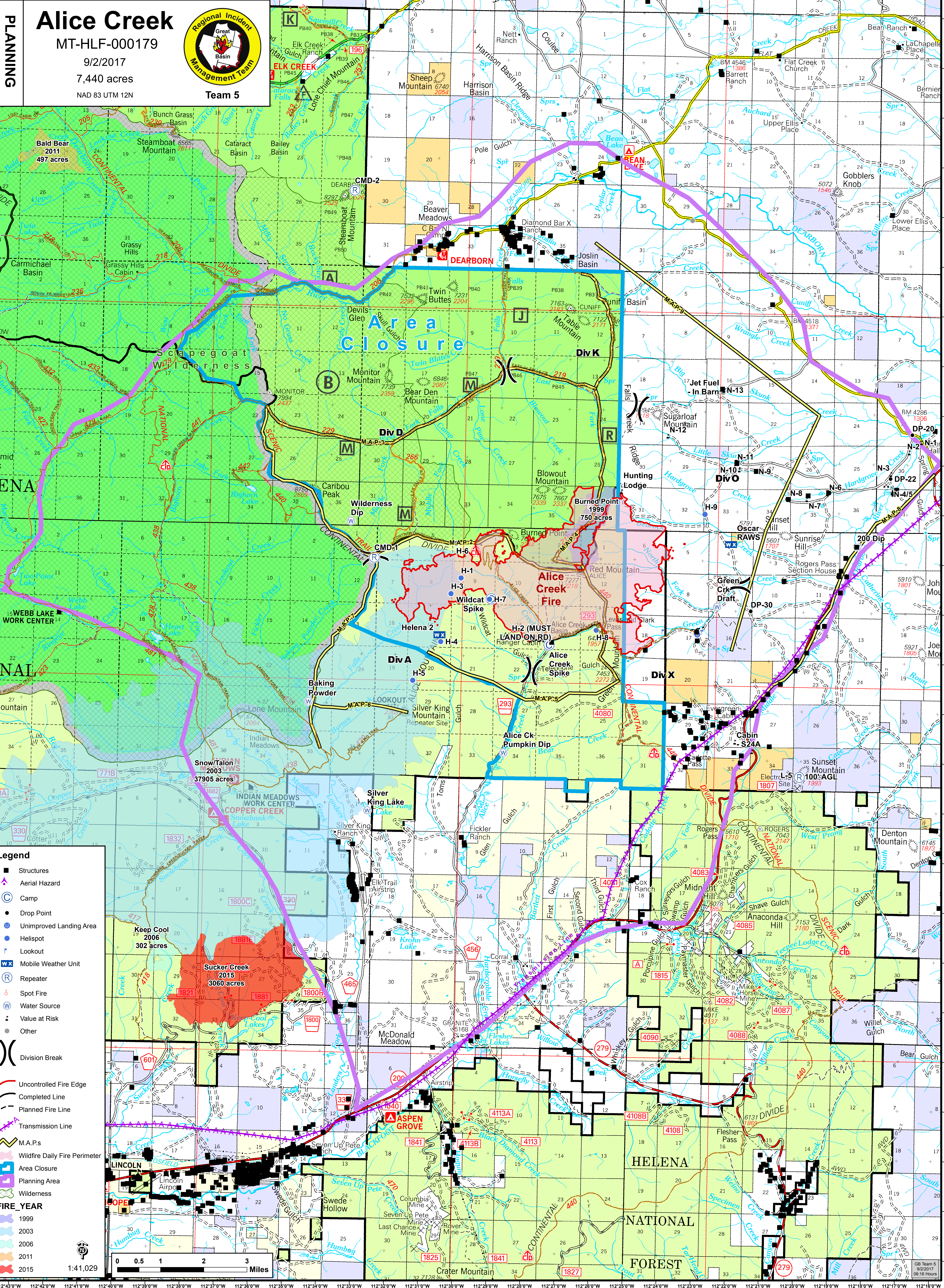


112°44'0"W 112°43'0"W 112°42'0"W 112°41'0"W 112°40'0"W 112°39'0"W 112°38'0"W 112°37'0"W 112°36'0"W 112°35'0"W 112°34'0"W 112°33'0"W 112°32'0"W 112°31'0"W 112°30'0"W 112°29'0"W 112°28'0"W 112°27'0"W 112°26'0"W 112°25'0"W 112°24'0"W 112°23'0"W 112°22'0"W 112°21'0"W 112°20'0"W 112°19'0"W 112°18'0"W 112°17'0"W



Alice Creek

MT-HLF-000179
9/2/2017
7,440 acres
NAD 83 UTM 12N



Legend

- Structures
- Aerial Hazard
- Camp
- Drop Point
- Unimproved Landing Area
- Helispot
- Lookout
- Mobile Weather Unit
- Repeater
- Spot Fire
- Water Source
- Value at Risk
- Other

Division Break

Uncontrolled Fire Edge

Completed Line

Planned Fire Line

Transmission Line

M.A.P.s

Wildfire Daily Fire Perimeter

Area Closure

Planning Area

Wilderness

FIRE_YEAR

- 1999
- 2003
- 2006
- 2011
- 2015

0 0.5 1 2 3 Miles

1:41,029