


112°36'0"W 112°35'0"W 112°34'0"W 112°33'0"W 112°32'0"W 112°31'0"W 112°30'0"W 112°29'0"W 112°28'0"W 112°27'0"W 112°26'0"W 112°25'0"W 112°24'0"W 112°23'0"W 112°22'0"W 112°21'0"W 112°20'0"W 112°19'0"W 112°18'0"W 112°17'0"W 112°16'0"W 112°15'0"W

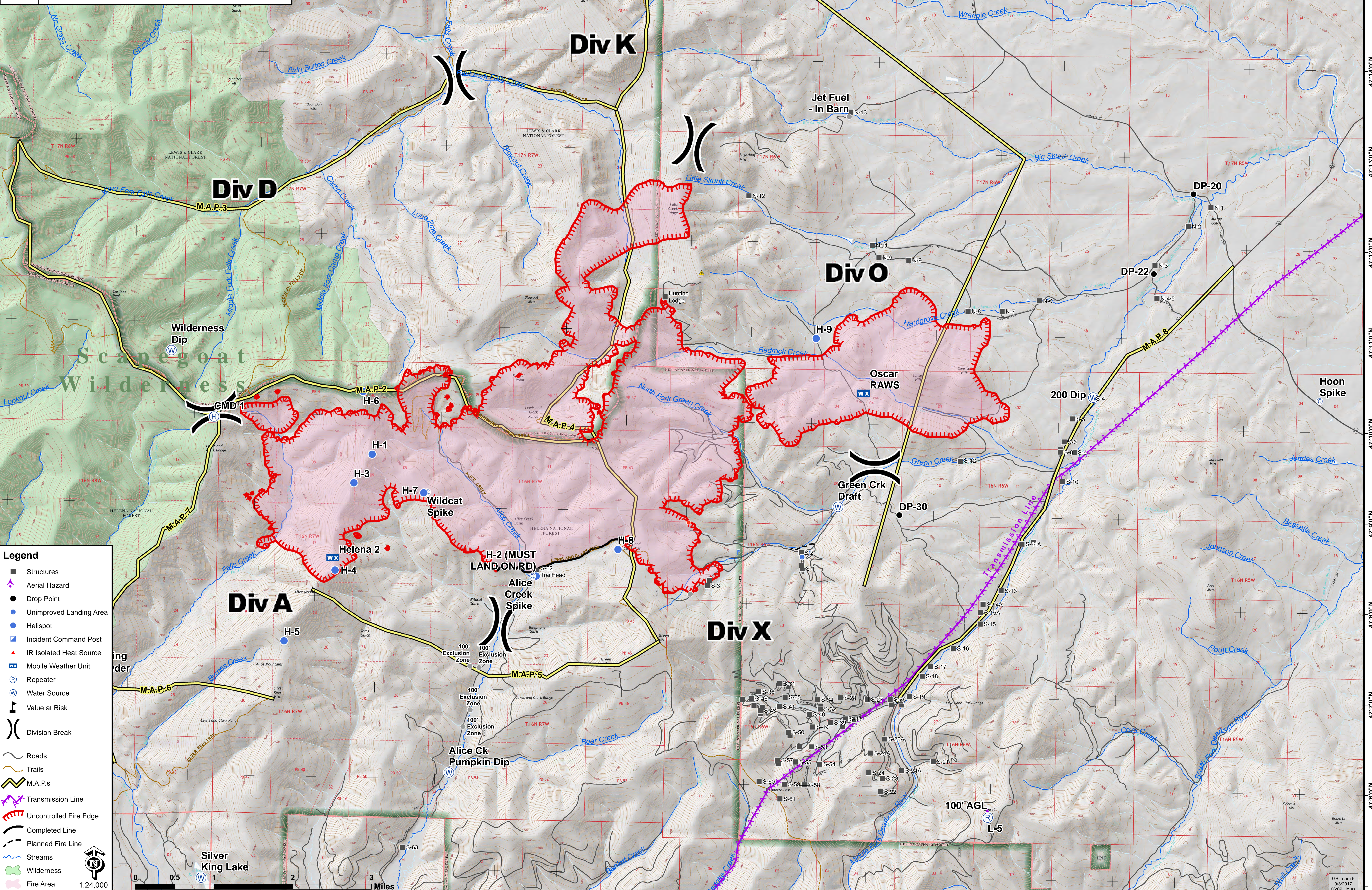
47°16'0"N 47°15'0"N 47°14'0"N 47°13'0"N 47°12'0"N 47°11'0"N 47°10'0"N 47°9'0"N 47°8'0"N 47°7'0"N 47°6'0"N 47°5'0"N

OPERATIONS

Alice Creek
 MT-HLF-000179
 9/3/2017
 11,600 acres
 NAD 83 UTM 12N



Team 5



Legend

- Structures
- ▲ Aerial Hazard
- Drop Point
- Unimproved Landing Area
- Helispot
- ⊕ Incident Command Post
- ▲ IR Isolated Heat Source
- ⊗ Mobile Weather Unit
- ⊕ Repeater
- ⊕ Water Source
- ⊕ Value at Risk
- ⊕ Division Break
- Roads
- Trails
- M.A.P.s
- Transmission Line
- Uncontrolled Fire Edge
- Completed Line
- Planned Fire Line
- Streams
- Wilderness
- Fire Area

0 0.5 1 2 3 Miles

1:24,000

GB Team 5
9/3/2017
06:09 Hours