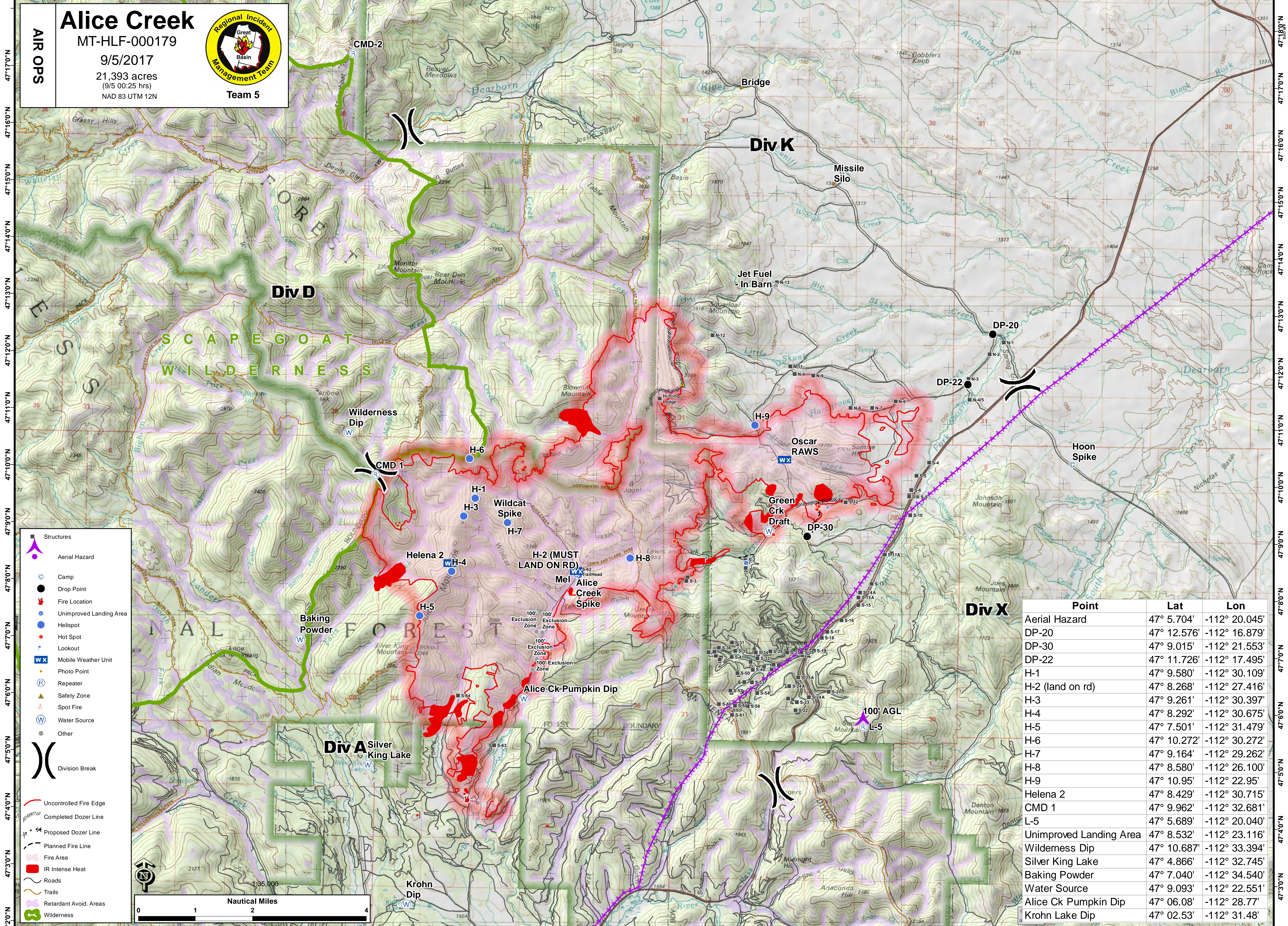



112°42'0"W 112°40'0"W 112°38'0"W 112°36'0"W 112°34'0"W 112°32'0"W 112°30'0"W 112°28'0"W 112°26'0"W 112°24'0"W 112°22'0"W 112°20'0"W 112°18'0"W 112°16'0"W 112°14'0"W 112°12'0"W 112°11'0"W 112°10'0"W



AIR OPS

Alice Creek
 MT-HLF-000179
 9/5/2017
 21,393 acres
 (9/5 00:25 hrs)
 NAD 83 UTM 12N



Team 5

- Structures
- Aerial Hazard
- Camp
- Drop Point
- Fire Location
- Unimproved Landing Area
- Helispot
- Hot Spot
- Lookout
- Mobile Weather Unit
- Photo Point
- Repeater
- Safety Zone
- Spot Fire
- Water Source
- Other
- Division Break
- Uncontrolled Fire Edge
- Completed Dozer Line
- Proposed Dozer Line
- Planned Fire Line
- Fire Area
- IR Intense Heat
- Roads
- Trails
- Retardant Avoid. Areas
- Wilderness



Point	Lat	Lon
Aerial Hazard	47° 5.704'	-112° 20.045'
DP-20	47° 12.576'	-112° 16.879'
DP-30	47° 9.015'	-112° 21.553'
DP-22	47° 11.726'	-112° 17.495'
H-1	47° 9.580'	-112° 30.109'
H-2 (land on rd)	47° 8.268'	-112° 27.416'
H-3	47° 9.261'	-112° 30.397'
H-4	47° 8.292'	-112° 30.675'
H-5	47° 7.501'	-112° 31.479'
H-6	47° 10.272'	-112° 30.272'
H-7	47° 9.164'	-112° 29.262'
H-8	47° 8.580'	-112° 26.100'
H-9	47° 10.95'	-112° 22.95'
Helena 2	47° 8.429'	-112° 30.715'
CMD 1	47° 9.962'	-112° 32.681'
L-5	47° 5.689'	-112° 20.040'
Unimproved Landing Area	47° 8.532'	-112° 23.116'
Wilderness Dip	47° 10.687'	-112° 33.394'
Silver King Lake	47° 4.866'	-112° 32.745'
Baking Powder	47° 7.040'	-112° 34.540'
Water Source	47° 9.093'	-112° 22.551'
Alice Ck Pumpkin Dip	47° 06.08'	-112° 28.77'
Krohn Lake Dip	47° 02.53'	-112° 31.48'

112°41'0"W 112°40'0"W 112°39'0"W 112°38'0"W 112°37'0"W 112°36'0"W 112°35'0"W 112°34'0"W 112°33'0"W 112°32'0"W 112°31'0"W 112°30'0"W 112°29'0"W 112°28'0"W 112°27'0"W 112°26'0"W 112°25'0"W 112°24'0"W 112°23'0"W 112°22'0"W 112°21'0"W 112°20'0"W 112°19'0"W 112°18'0"W 112°17'0"W 112°16'0"W 112°15'0"W 112°14'0"W 112°13'0"W 112°12'0"W 112°11'0"W 112°10'0"W