

112°40'0"W 112°38'0"W 112°36'0"W 112°34'0"W 112°32'0"W 112°30'0"W 112°28'0"W 112°26'0"W 112°24'0"W 112°22'0"W 112°20'0"W 112°18'0"W 112°16'0"W 112°14'0"W 112°12'0"W 112°10'0"W 112°9'0"W 112°8'0"W 112°7'0"W 112°6'0"W 112°5'0"W 112°4'0"W

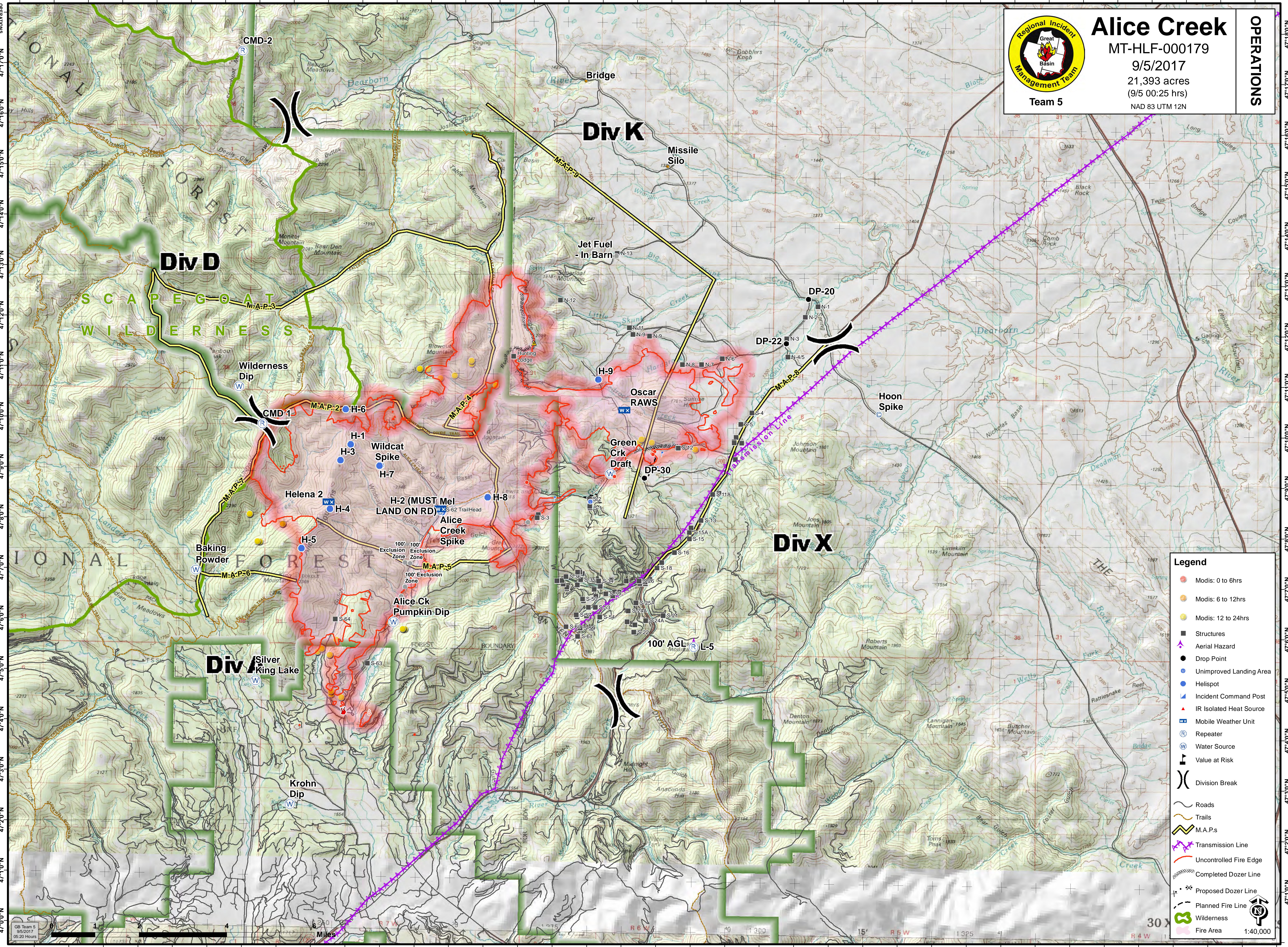


# Alice Creek

MT-HLF-000179  
9/5/2017  
21,393 acres  
(9/5 00:25 hrs)  
NAD 83 UTM 12N

**OPERATIONS**

Team 5



**Legend**

- Modis: 0 to 6hrs
- Modis: 6 to 12hrs
- Modis: 12 to 24hrs
- Structures
- ▲ Aerial Hazard
- Drop Point
- Unimproved Landing Area
- Helispot
- ▲ Incident Command Post
- ▲ IR Isolated Heat Source
- Ⓜ Mobile Weather Unit
- Ⓜ Repeater
- Ⓜ Water Source
- Ⓜ Value at Risk
- ) Division Break
- Roads
- Trails
- M.A.P.s
- Transmission Line
- Uncontrolled Fire Edge
- Completed Dozer Line
- - - Proposed Dozer Line
- - - Planned Fire Line
- Wilderness
- Fire Area

GB Team 5  
9/5/2017  
06:20 Hours

112°38'0"W 112°36'0"W 112°34'0"W 112°32'0"W 112°30'0"W 112°28'0"W 112°26'0"W 112°24'0"W 112°22'0"W 112°20'0"W 112°18'0"W 112°16'0"W 112°14'0"W 112°12'0"W 112°10'0"W 112°9'0"W 112°8'0"W 112°7'0"W 112°6'0"W 112°5'0"W 112°4'0"W