

-112°42'0" -112°40'0" -112°38'0" -112°36'0" -112°34'0" -112°32'0" -112°30'0" -112°28'0" -112°26'0" -112°24'0" -112°22'0" -112°20'0" -112°18'0" -112°16'0" -112°14'0" -112°12'0" -112°10'0" -112°8'0" -112°6'0"



Alice Creek

MT-HLF-000179

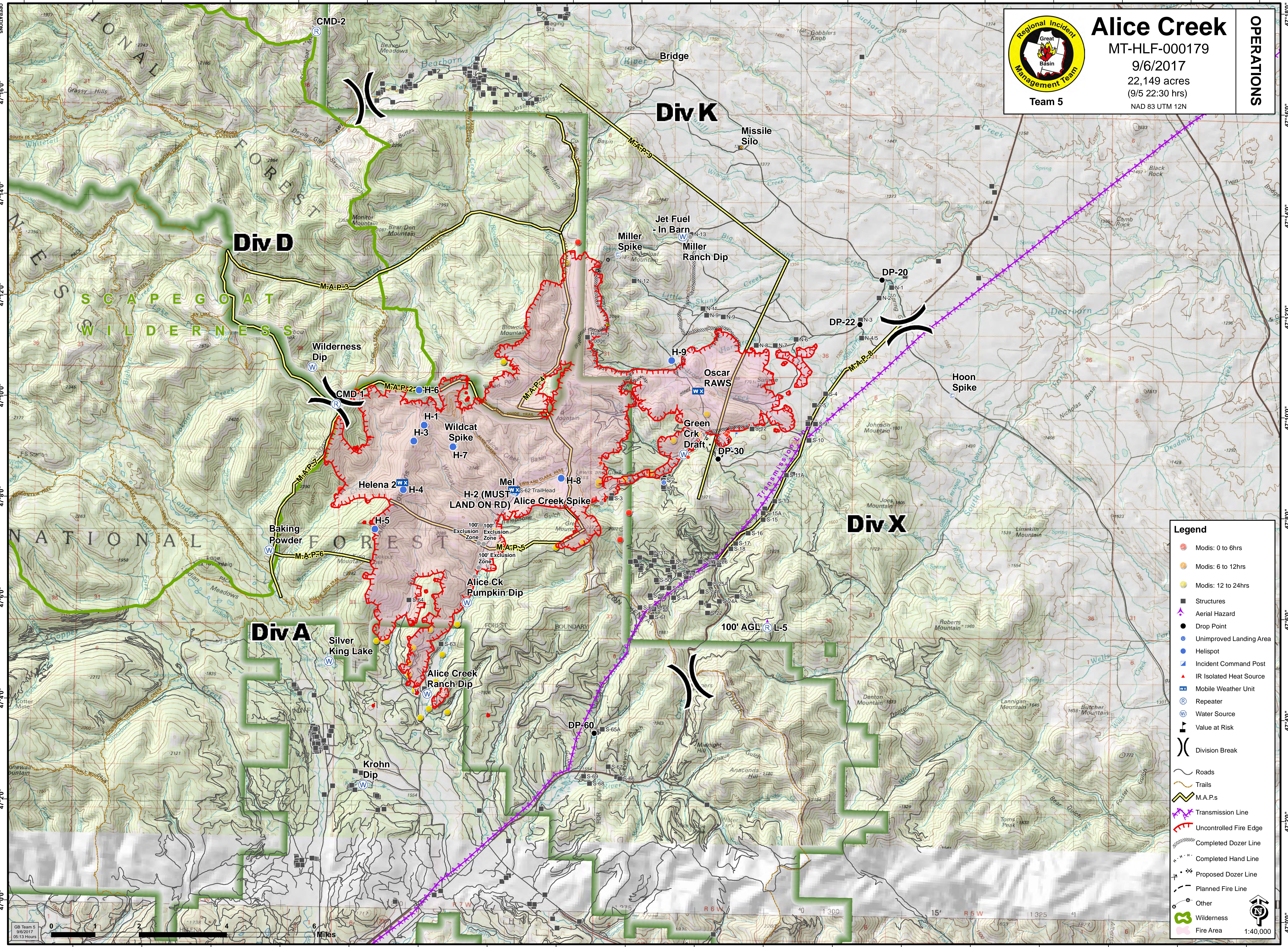
9/6/2017

22,149 acres
(9/5 22:30 hrs)

NAD 83 UTM 12N

Team 5

OPERATIONS



Legend	
	Modis: 0 to 6hrs
	Modis: 6 to 12hrs
	Modis: 12 to 24hrs
	Structures
	Aerial Hazard
	Drop Point
	Unimproved Landing Area
	Helispot
	Incident Command Post
	IR Isolated Heat Source
	Mobile Weather Unit
	Repeater
	Water Source
	Value at Risk
	Division Break
	Roads
	Trails
	M.A.P.s
	Transmission Line
	Uncontrolled Fire Edge
	Completed Dozer Line
	Completed Hand Line
	Proposed Dozer Line
	Planned Fire Line
	Other
	Wilderness
	Fire Area

0 1 2 3 4 5 6 Miles
GB Team 5
9/6/2017
05:13 Hours



-112°40'0" -112°38'0" -112°36'0" -112°34'0" -112°32'0" -112°30'0" -112°28'0" -112°26'0" -112°24'0" -112°22'0" -112°20'0" -112°18'0" -112°16'0" -112°14'0" -112°12'0" -112°10'0" -112°8'0" -112°6'0"