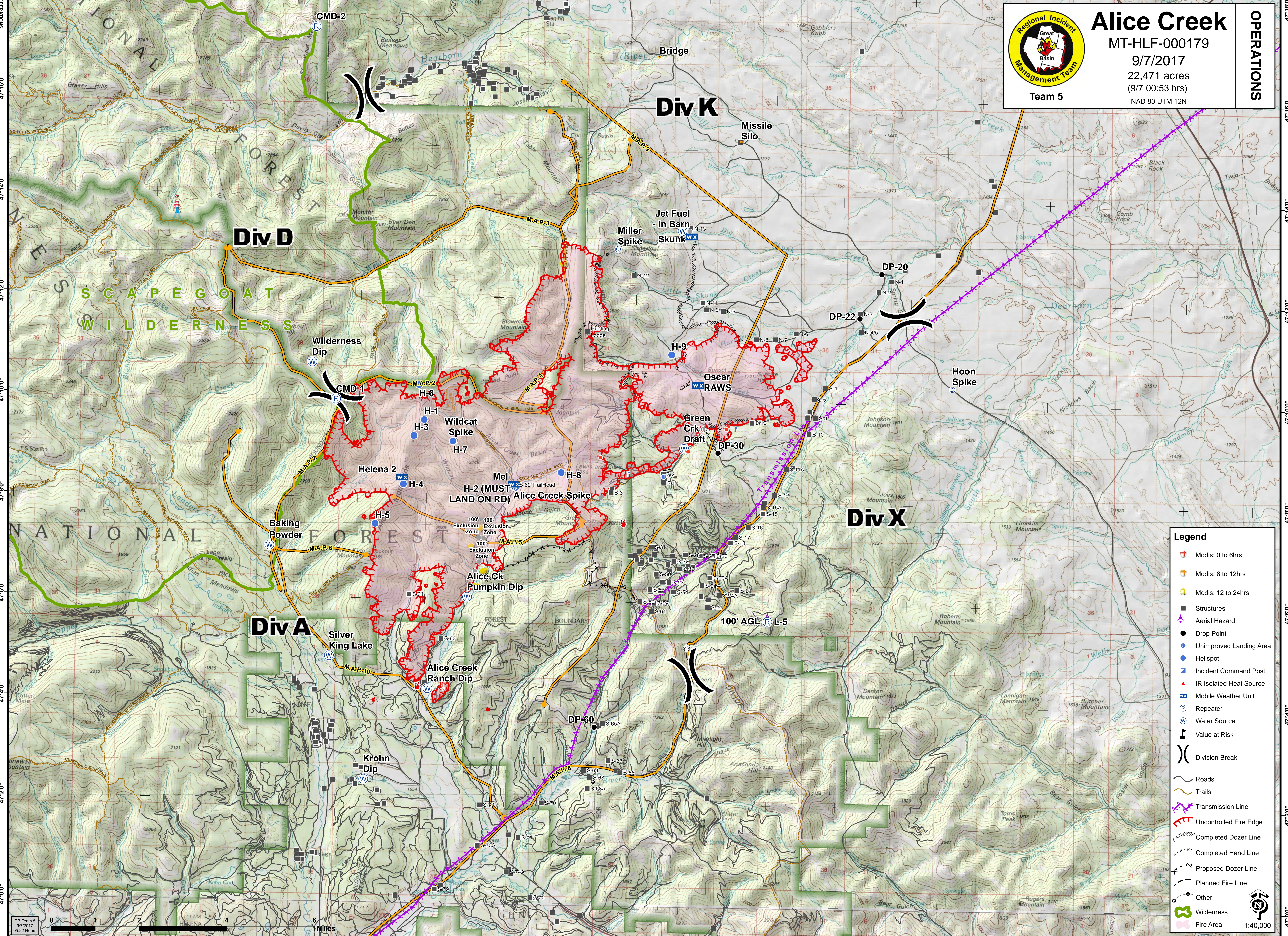


-112°42'0" -112°40'0" -112°38'0" -112°36'0" -112°34'0" -112°32'0" -112°30'0" -112°28'0" -112°26'0" -112°24'0" -112°22'0" -112°20'0" -112°18'0" -112°16'0" -112°14'0" -112°12'0" -112°10'0" -112°8'0" -112°6'0"



**Alice Creek**  
MT-HLF-000179  
9/7/2017  
22,471 acres  
(9/7 00:53 hrs)  
NAD 83 UTM 12N

**OPERATIONS**

Team 5

- Legend**
- Modis: 0 to 6hrs
  - Modis: 6 to 12hrs
  - Modis: 12 to 24hrs
  - Structures
  - Aerial Hazard
  - Drop Point
  - Unimproved Landing Area
  - Helispot
  - Incident Command Post
  - IR Isolated Heat Source
  - Mobile Weather Unit
  - Repeater
  - Water Source
  - Value at Risk
  - Division Break
  - Roads
  - Trails
  - Transmission Line
  - Uncontrolled Fire Edge
  - Completed Dozer Line
  - Completed Hand Line
  - Proposed Dozer Line
  - Planned Fire Line
  - Other
  - Wilderness
  - Fire Area

GB Team 5  
9/7/2017  
05:22 Hours



-112°40'0" -112°38'0" -112°36'0" -112°34'0" -112°32'0" -112°30'0" -112°28'0" -112°26'0" -112°24'0" -112°22'0" -112°20'0" -112°18'0" -112°16'0" -112°14'0" -112°12'0" -112°10'0" -112°8'0" -112°6'0"