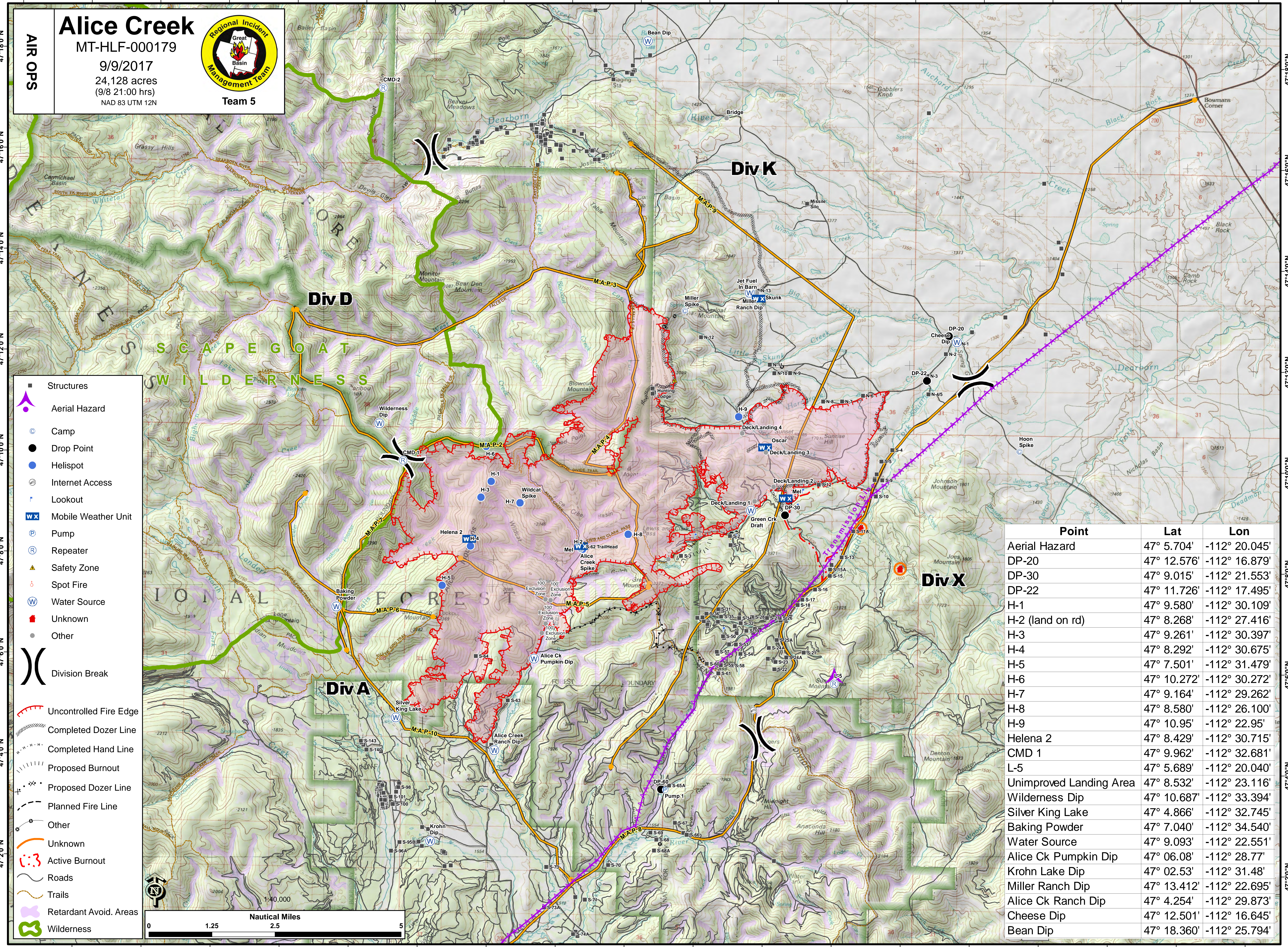



112°44'0"W 112°42'0"W 112°40'0"W 112°38'0"W 112°36'0"W 112°34'0"W 112°32'0"W 112°30'0"W 112°28'0"W 112°26'0"W 112°24'0"W 112°22'0"W 112°20'0"W 112°18'0"W 112°16'0"W 112°14'0"W 112°12'0"W 112°10'0"W 112°8'0"W



Alice Creek
 MT-HLF-000179
 9/9/2017
 24,128 acres
 (9/8 21:00 hrs)
 NAD 83 UTM 12N



Team 5

AIR OPS

- Structures
- ▲ Aerial Hazard
- ⊙ Camp
- Drop Point
- Helispot
- ⊙ Internet Access
- ⌚ Lookout
- WX Mobile Weather Unit
- Ⓟ Pump
- Ⓡ Repeater
- ▲ Safety Zone
- ⊙ Spot Fire
- Ⓜ Water Source
- Unknown
- Other
- ⌋ Division Break
- ⚡ Uncontrolled Fire Edge
- ⚡ Completed Dozer Line
- ⚡ Completed Hand Line
- ⚡ Proposed Burnout
- ⚡ Proposed Dozer Line
- ⚡ Planned Fire Line
- ⚡ Other
- ⚡ Unknown
- ⚡ Active Burnout
- ⚡ Roads
- ⚡ Trails
- ⚡ Retardant Avoid. Areas
- ⚡ Wilderness

Point	Lat	Lon
Aerial Hazard	47° 5.704'	-112° 20.045'
DP-20	47° 12.576'	-112° 16.879'
DP-30	47° 9.015'	-112° 21.553'
DP-22	47° 11.726'	-112° 17.495'
H-1	47° 9.580'	-112° 30.109'
H-2 (land on rd)	47° 8.268'	-112° 27.416'
H-3	47° 9.261'	-112° 30.397'
H-4	47° 8.292'	-112° 30.675'
H-5	47° 7.501'	-112° 31.479'
H-6	47° 10.272'	-112° 30.272'
H-7	47° 9.164'	-112° 29.262'
H-8	47° 8.580'	-112° 26.100'
H-9	47° 10.95'	-112° 22.95'
Helena 2	47° 8.429'	-112° 30.715'
CMD 1	47° 9.962'	-112° 32.681'
L-5	47° 5.689'	-112° 20.040'
Unimproved Landing Area	47° 8.532'	-112° 23.116'
Wilderness Dip	47° 10.687'	-112° 33.394'
Silver King Lake	47° 4.866'	-112° 32.745'
Baking Powder	47° 7.040'	-112° 34.540'
Water Source	47° 9.093'	-112° 22.551'
Alice Ck Pumpkin Dip	47° 06.08'	-112° 28.77'
Krohn Lake Dip	47° 02.53'	-112° 31.48'
Miller Ranch Dip	47° 13.412'	-112° 22.695'
Alice Ck Ranch Dip	47° 4.254'	-112° 29.873'
Cheese Dip	47° 12.501'	-112° 16.645'
Bean Dip	47° 18.360'	-112° 25.794'

112°42'0"W 112°40'0"W 112°38'0"W 112°36'0"W 112°34'0"W 112°32'0"W 112°30'0"W 112°28'0"W 112°26'0"W 112°24'0"W 112°22'0"W 112°20'0"W 112°18'0"W 112°16'0"W 112°14'0"W 112°12'0"W 112°10'0"W 112°8'0"W