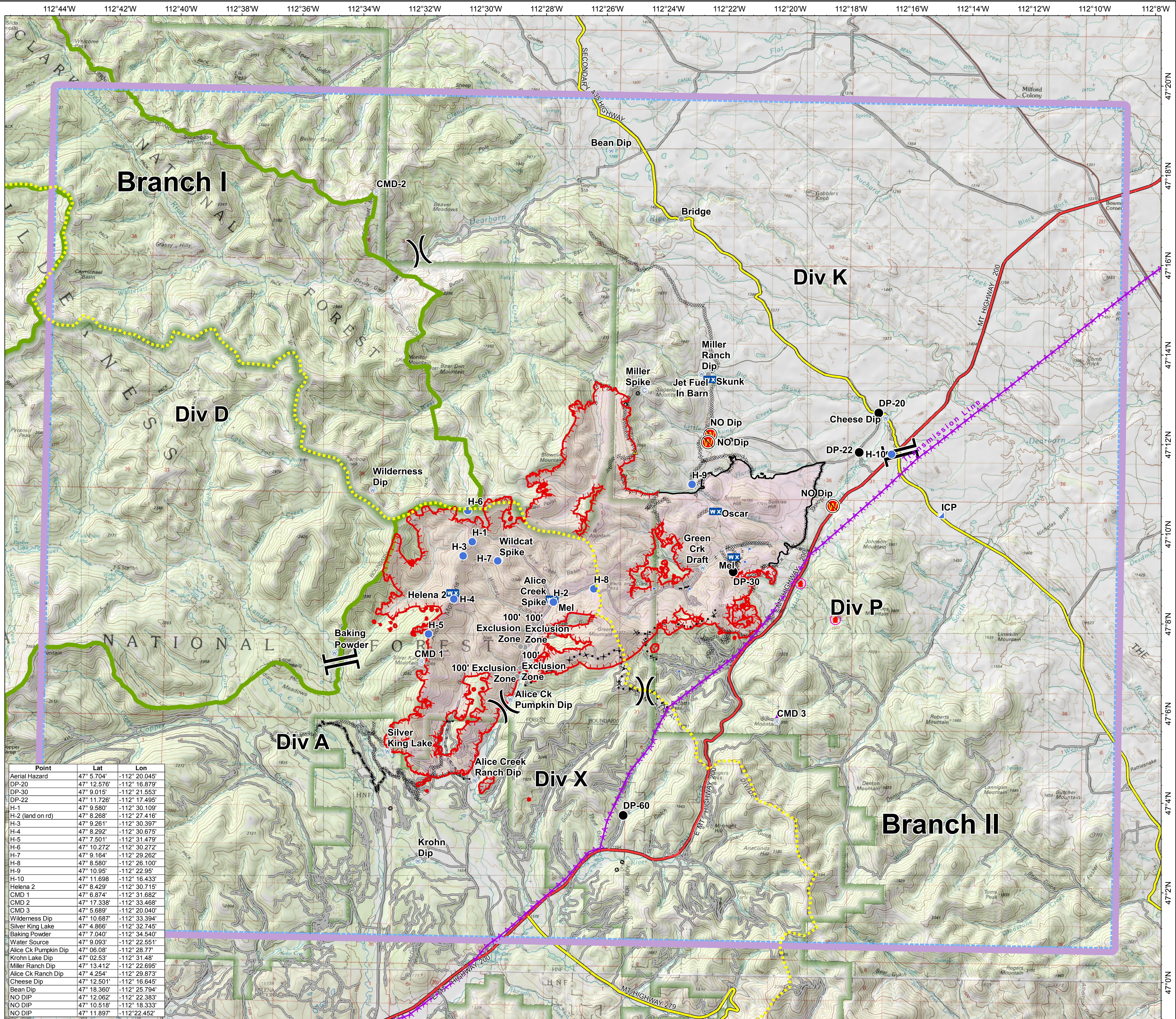


**Air Operations**  
 Alice Creek  
 MT-HLF-000179  
 09/14/2017  
 29,252 Acres



- Transmission Line
- Continental Divide
- TFR
- Aerial Hazard
- Camp
- Drop Point
- Gate
- Helispot
- Incident Command Post
- Lookout
- Mobile Weather Unit
- Repeater
- Safety Zone
- Water Source
- Restricted Water Source
- Unknown
- Other
- Division Break
- Branch Break
- Uncontrolled Fire Edge
- Completed Line
- Completed Dozer Line
- Completed Hand Line
- Road as Completed Line
- Proposed Dozer Line
- Planned Fire Line
- Ridge/Geographic Feature
- Other
- Unknown
- Wildfire Daily Fire Perimeter



Point	Lat	Lon
Aerial Hazard	47° 5.704'	-112° 20.045'
DP-20	47° 12.576'	-112° 16.879'
DP-30	47° 9.015'	-112° 21.553'
DP-22	47° 11.726'	-112° 17.495'
H-1	47° 9.580'	-112° 30.109'
H-2 (land on rd)	47° 8.268'	-112° 27.416'
H-3	47° 9.261'	-112° 30.397'
H-4	47° 8.292'	-112° 30.675'
H-5	47° 7.501'	-112° 31.479'
H-6	47° 10.272'	-112° 30.272'
H-7	47° 9.164'	-112° 29.262'
H-8	47° 8.580'	-112° 26.100'
H-9	47° 10.95'	-112° 22.95'
H-10	47° 11.698'	-112° 16.433'
Helena 2	47° 8.429'	-112° 30.715'
CMD 1	47° 6.874'	-112° 31.682'
CMD 2	47° 17.338'	-112° 33.468'
CMD 3	47° 5.689'	-112° 20.040'
Wilderness Dip	47° 10.687'	-112° 33.394'
Silver King Lake	47° 4.866'	-112° 32.745'
Baking Powder	47° 7.040'	-112° 34.540'
Water Source	47° 9.093'	-112° 22.551'
Alice Ck Pumpkin Dip	47° 06.08'	-112° 28.77'
Krohn Lake Dip	47° 02.53'	-112° 31.48'
Miller Ranch Dip	47° 13.412'	-112° 22.695'
Alice Ck Ranch Dip	47° 4.254'	-112° 29.873'
Cheese Dip	47° 12.501'	-112° 16.645'
Bean Dip	47° 18.360'	-112° 25.794'
NO DIP	47° 12.062'	-112° 22.383'
NO DIP	47° 10.518'	-112° 18.333'
NO DIP	47° 11.897'	-112° 22.452'

N  
 0 1 2  
 Miles  
 Datum: NAD 1983 UTM 12N  
 Created by: Akeske  
 Created date: 09/14/2017